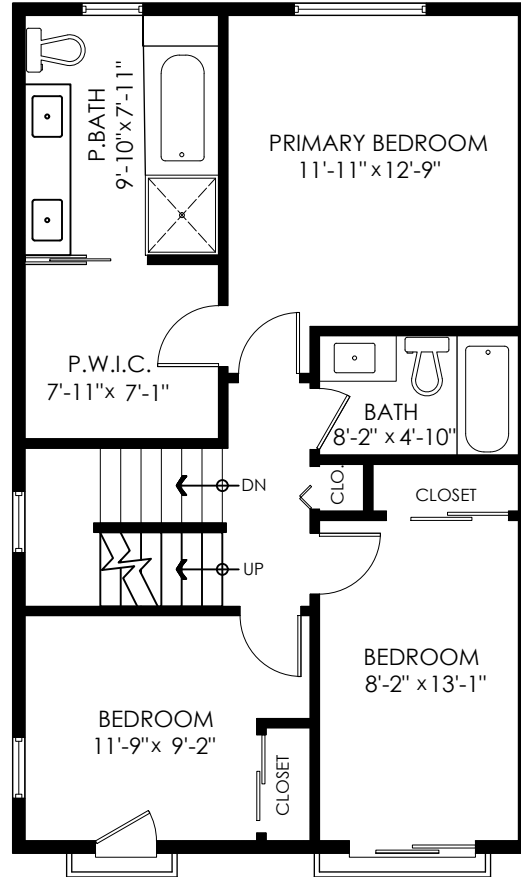
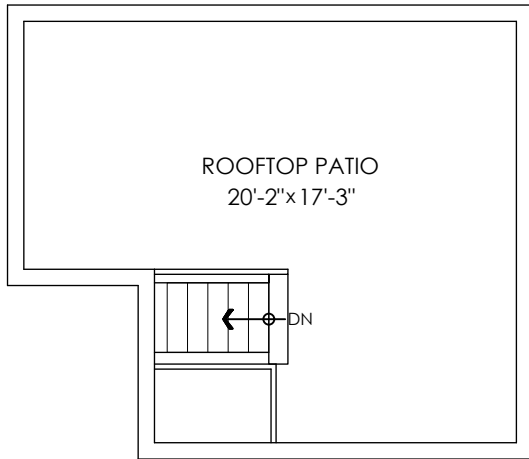


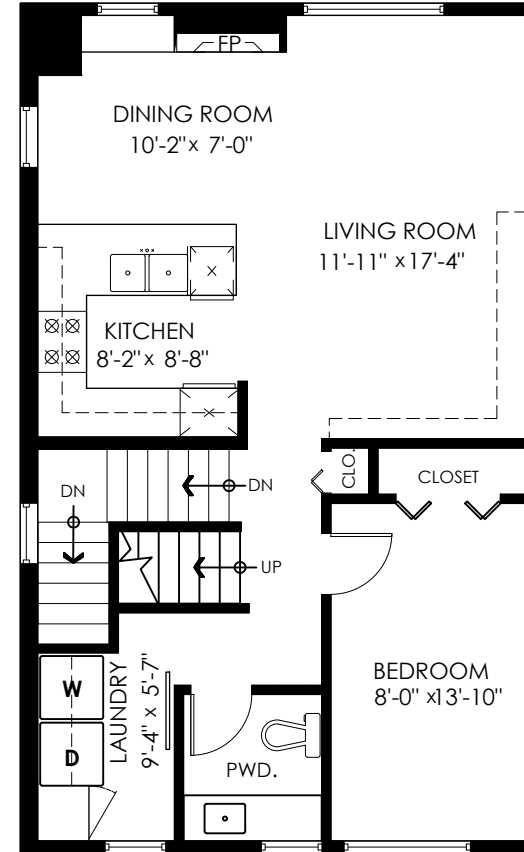
Main Floor: 740 sq.ft.  
Upper Floor: 740 sq.ft.  
Lower Floor: 66 sq.ft.  
**Total Livable: 1,546 sq.ft.**

Rooftop Patio: 362 sq.ft.

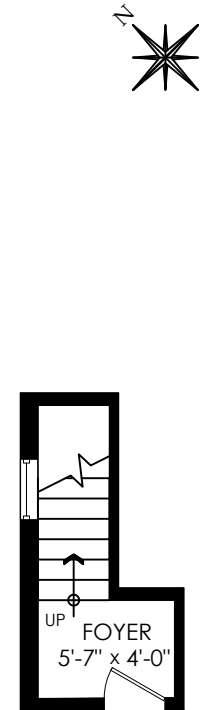
**Rooftop Patio**  
Floor Area: 362 sq.ft.



**Upper Floor Plan**  
Floor Area: 740 sq.ft.  
Ceiling Height: 8'



**Main Floor Plan**  
Floor Area: 740 sq.ft.  
Ceiling Height: 8'



**Lower Floor Plan**  
Floor Area: 66 sq.ft.  
Ceiling Height: 8'

