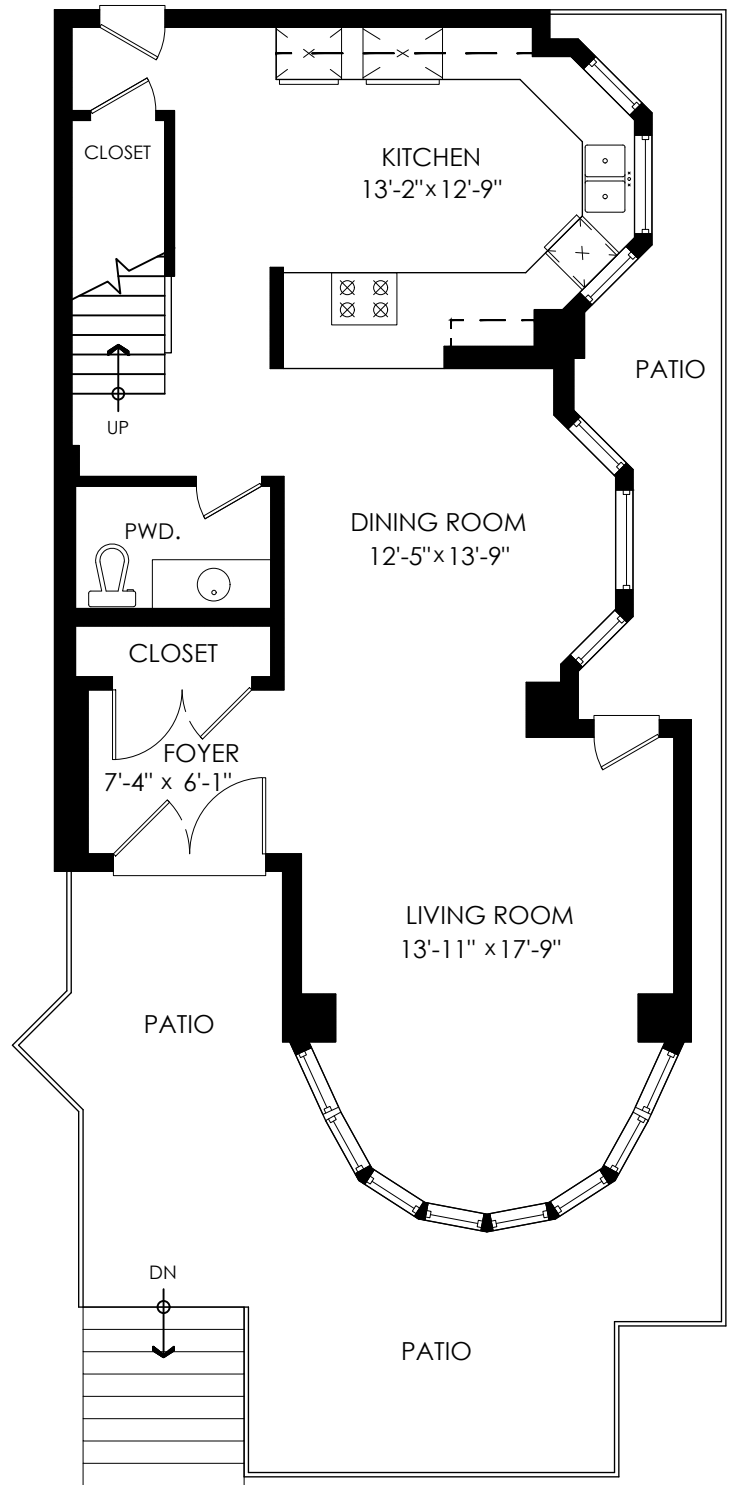


Upper Floor Plan
Floor Area: 694 sq.ft.
Ceiling Height: 9'

Main Floor: 861 sq.ft.
Upper Floor: 694 sq.ft.
Total: 1,555 sq.ft.

Patios: 437 sq.ft.
Balcony: 217 sq.ft.
Total Extras: 654 sq.ft.



Main Floor Plan
Floor Area: 861 sq.ft.
Ceiling Height: 8'-6"

