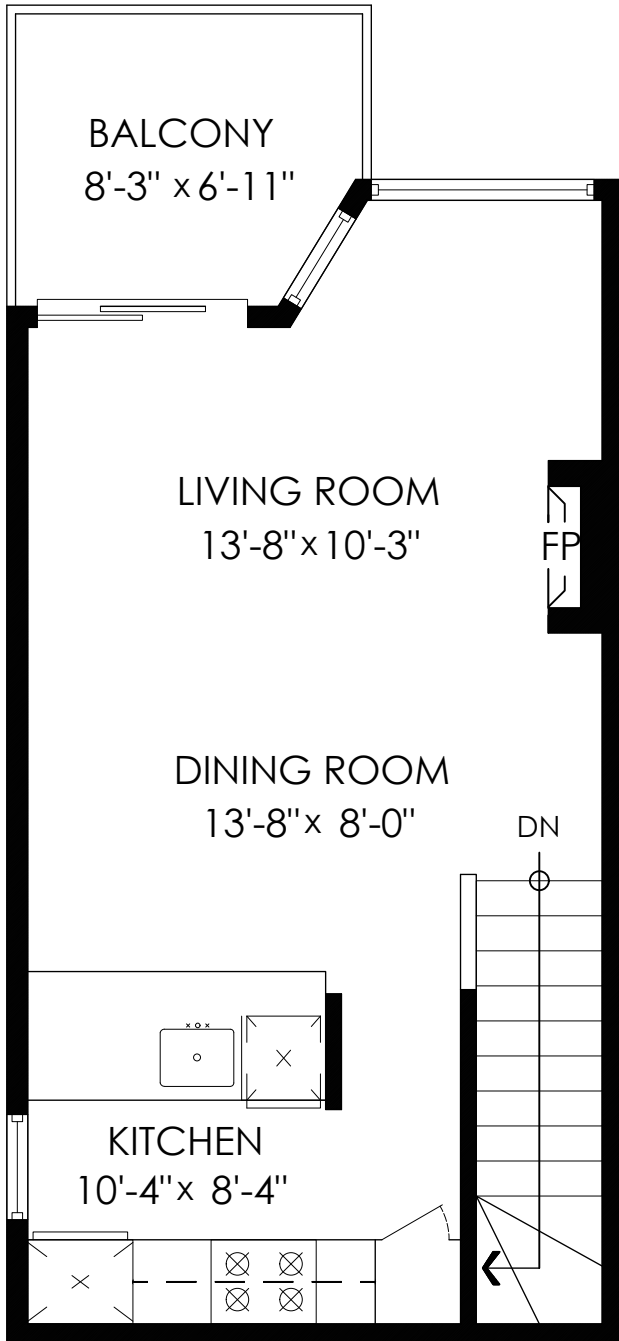


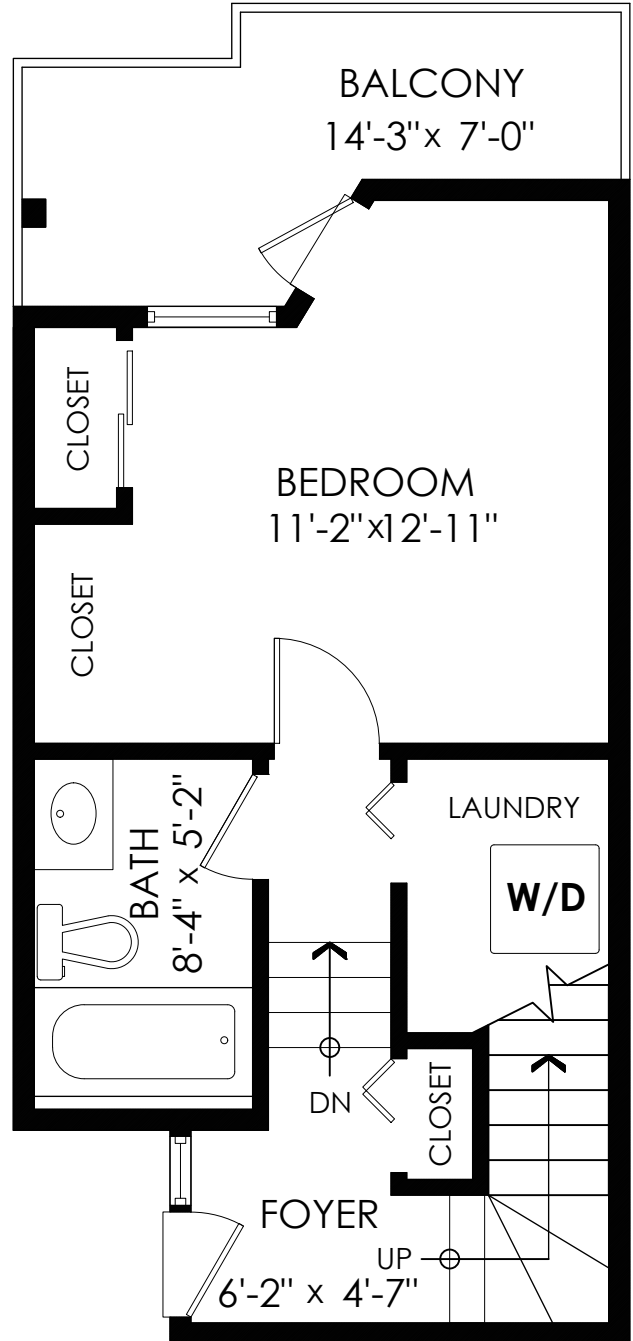
Main Floor: 384 sq.ft.
Lower Floor: 365 sq.ft.
Total Livable: 749 sq.ft.

Balconies: 125 sq.ft.
Total Extras: 125 sq.ft.



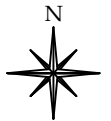
Main Floor Plan

Floor Area: 384 sq.ft.
Ceiling Height: 7'-11"



Lower Floor Plan

Floor Area: 365 sq.ft.
Ceiling Height: 10'-0"



MEASURED ON: (2021-11-15)

info@pixlworks.com www.pixlworks.com 604.329.5788



E&O Insured. Total square foot calculated to gross unit area. SQFT based on interior measurements to exterior walls, not taken from original blueprints, may include unfinished area. This is for marketing purposes only and is not intended for architectural/construction use. All details, sizes & placements should be considered approximate within +/- 2% tolerance.