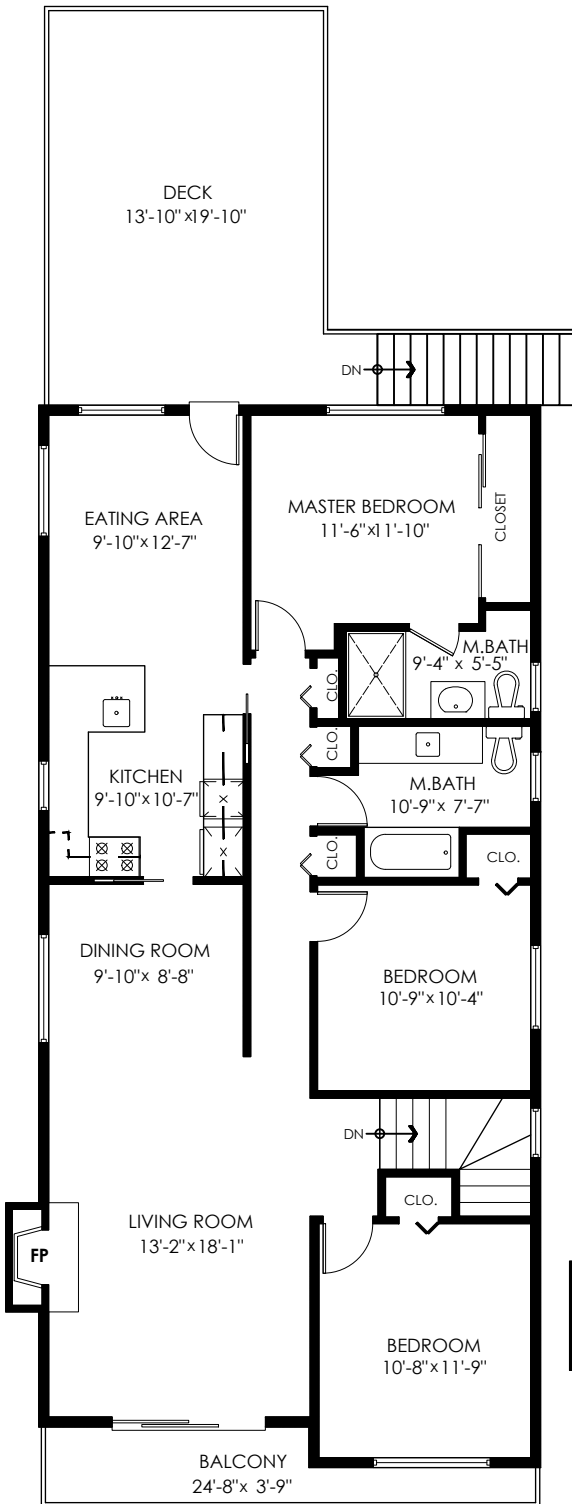


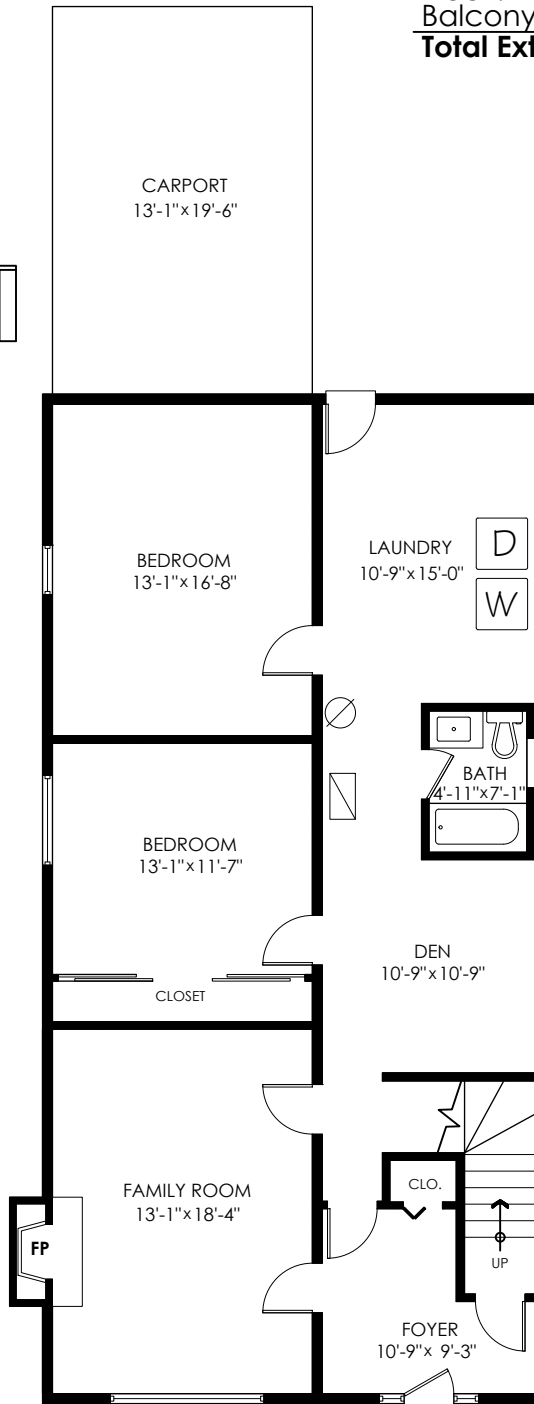
Main Floor: 1,324 sq.ft.
Lower Floor: 1,288 sq.ft.
Total Livable: 2,612 sq.ft.

Carport: 255 sq.ft.
Deck: 284 sq.ft.
Balcony: 70 sq.ft.
Total Extras: 609 sq.ft.



Main Floor Plan

Floor Area: 1324 sq.ft.
Ceiling Height: 7'-11"



Lower Floor Plan

Floor Area: 1288 sq.ft.
Ceiling Height: 7'-8"

