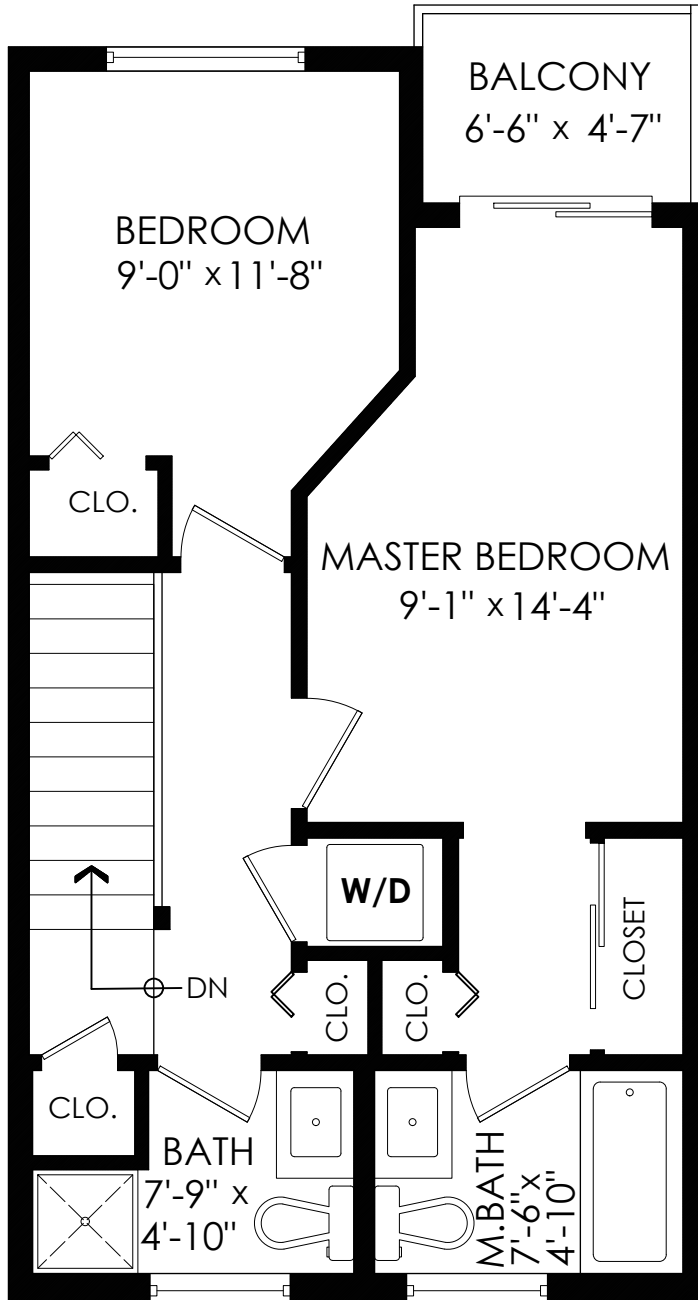


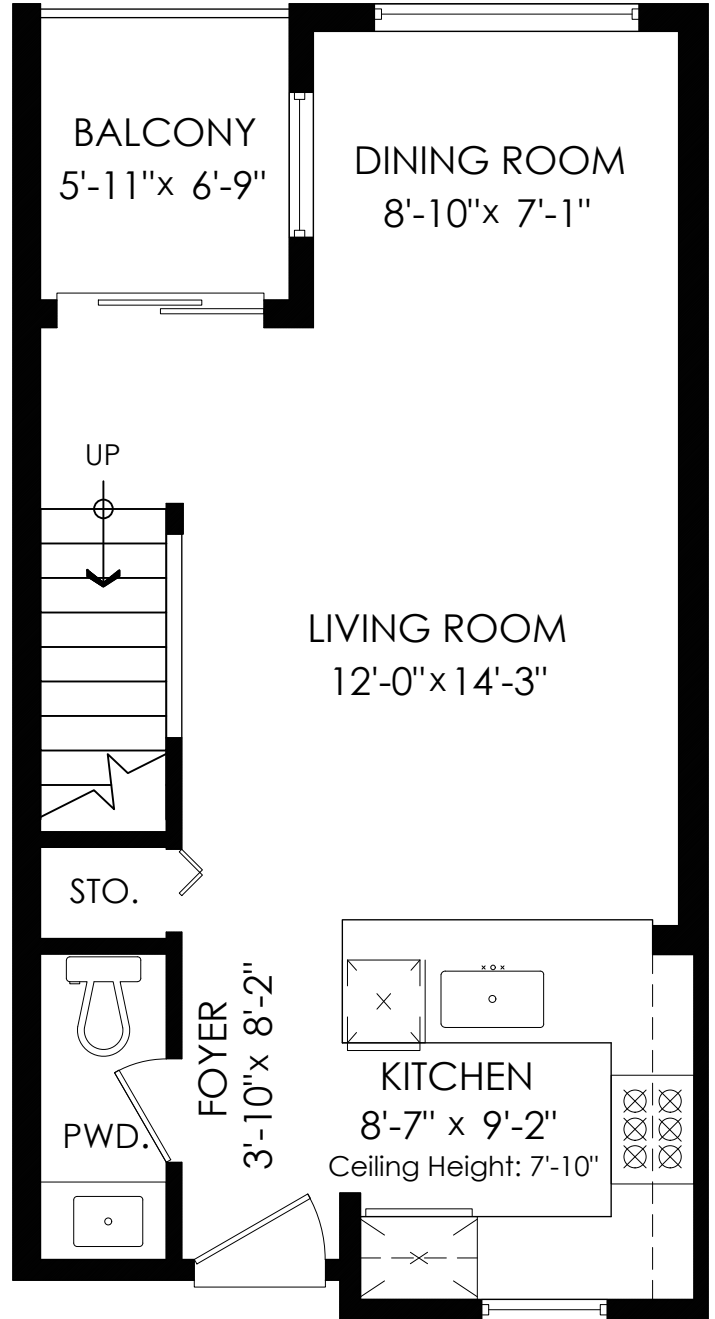
Main Floor: 479 sq.ft.
Upper Floor: 483 sq.ft.
Total: 962 sq.ft.

Balconies: 71 sq.ft.



Upper Floor Plan

Floor Area: 483 sq.ft.
Ceiling Height: 9'-1"



Main Floor Plan

Floor Area: 479 sq.ft.
Ceiling Height: 9'

