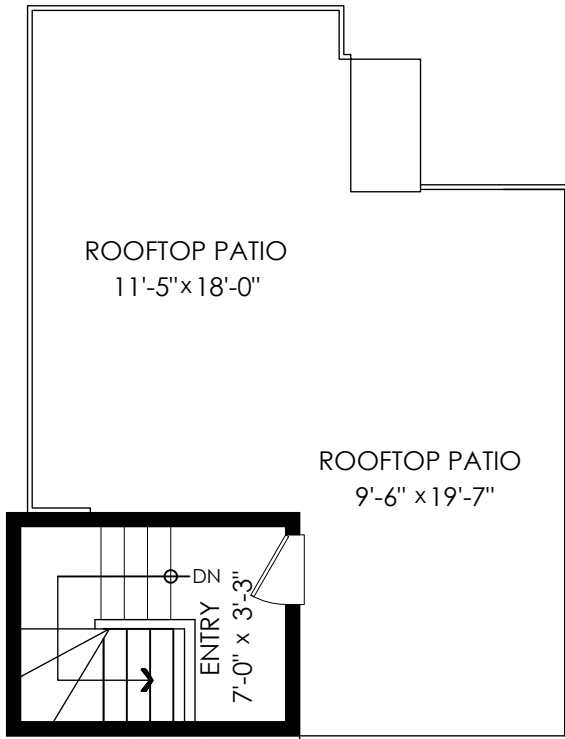


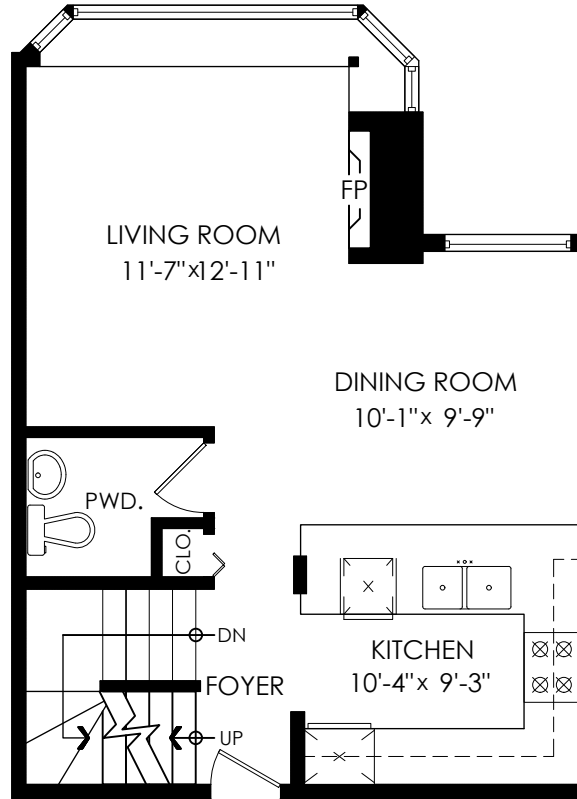
Main Floor: 504 sq.ft.
Upper Floor: 84 sq.ft.
Lower Floor: 505 sq.ft.
Total Livable: 1,093 sq.ft.

Rooftop Patio: 369 sq.ft.



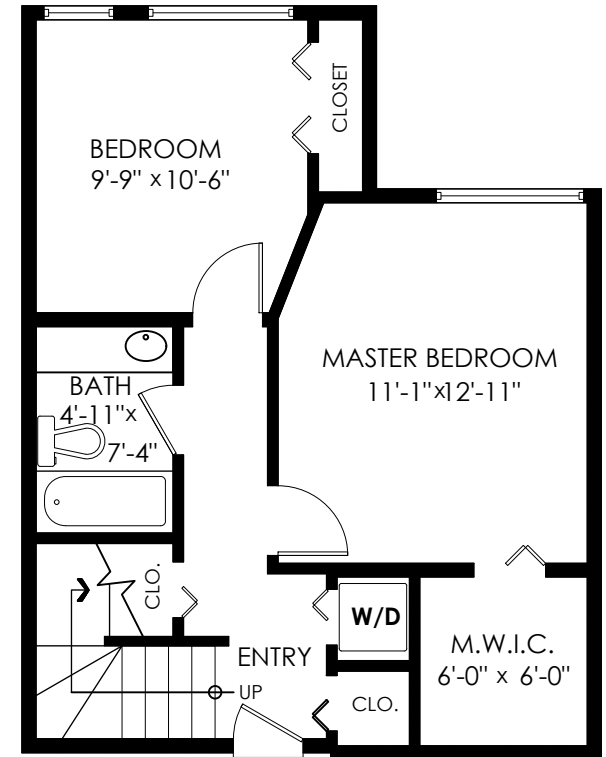
Upper Floor Plan

Floor Area: 84 sq.ft.
Ceiling Height: 7'11"



Main Floor Plan

Floor Area: 504 sq.ft.
Ceiling Height: 7'11"



Lower Floor Plan

Floor Area: 505 sq.ft.
Ceiling Height: 7'11"

