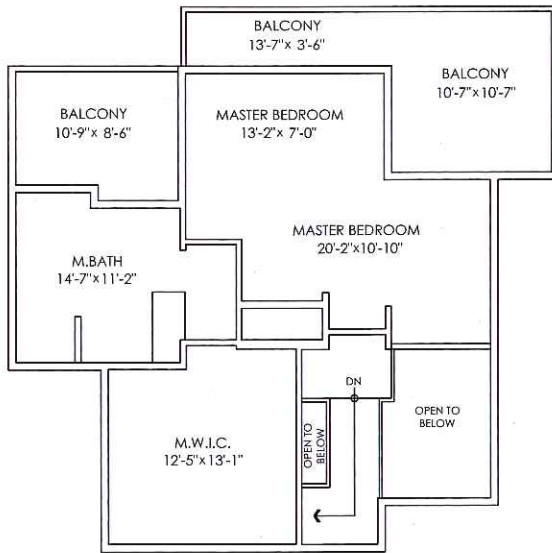


7321 Braeside Dr, Burnaby

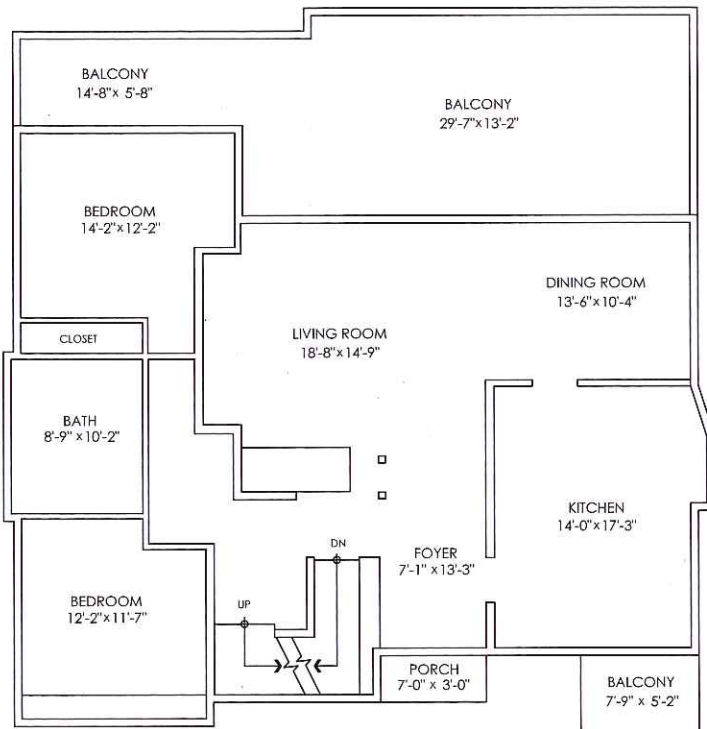


Upper Floor Plan
 Floor Area: 715 sq.ft.
 Ceiling Height: 8'

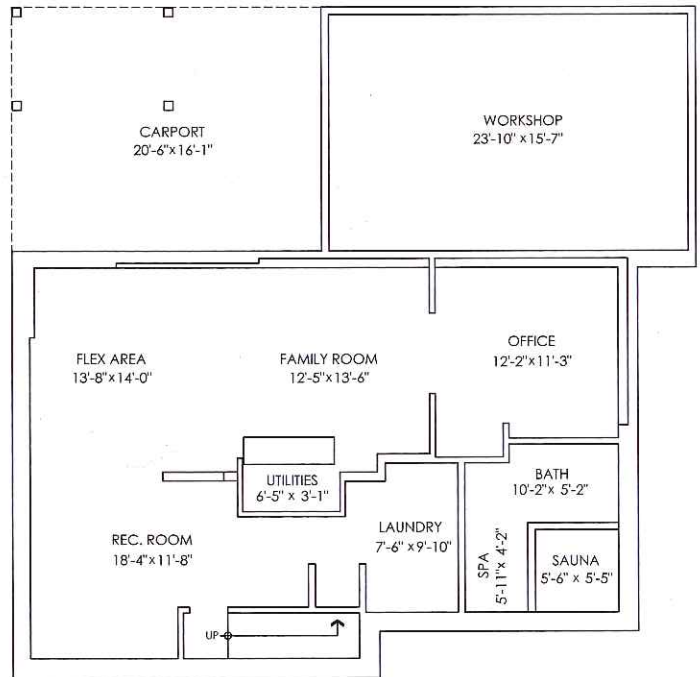
Main Floor:	1,514 sq.ft.
Upper Floor:	715 sq.ft.
Lower Floor:	1,113 sq.ft.
Total:	3,342 sq.ft.

Car Port:	330 sq.ft.
Workshop:	404 sq.ft.
Main Floor Balconies:	542 sq.ft.
Upper Floor Balconies:	268 sq.ft.
	21 sq.ft.
	1,565 sq.ft.

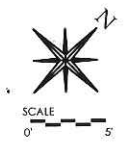
Open To Below: 86 sq.ft.



Main Floor Plan
 Floor Area: 1514 sq.ft.
 Ceiling Height: 8'-2"



Lower Floor Plan
 Floor Area: 1113 sq.ft.
 Ceiling Height: 7'-9"



Measuring, Design & Permits | 604-876-3738

E&O Insured for \$1,000,000. Total square foot calculated to gross unit area SQFT based on interior measurements to exterior walls, not taken from original blueprints, may include unfinished area. www.DraftOnSite.com