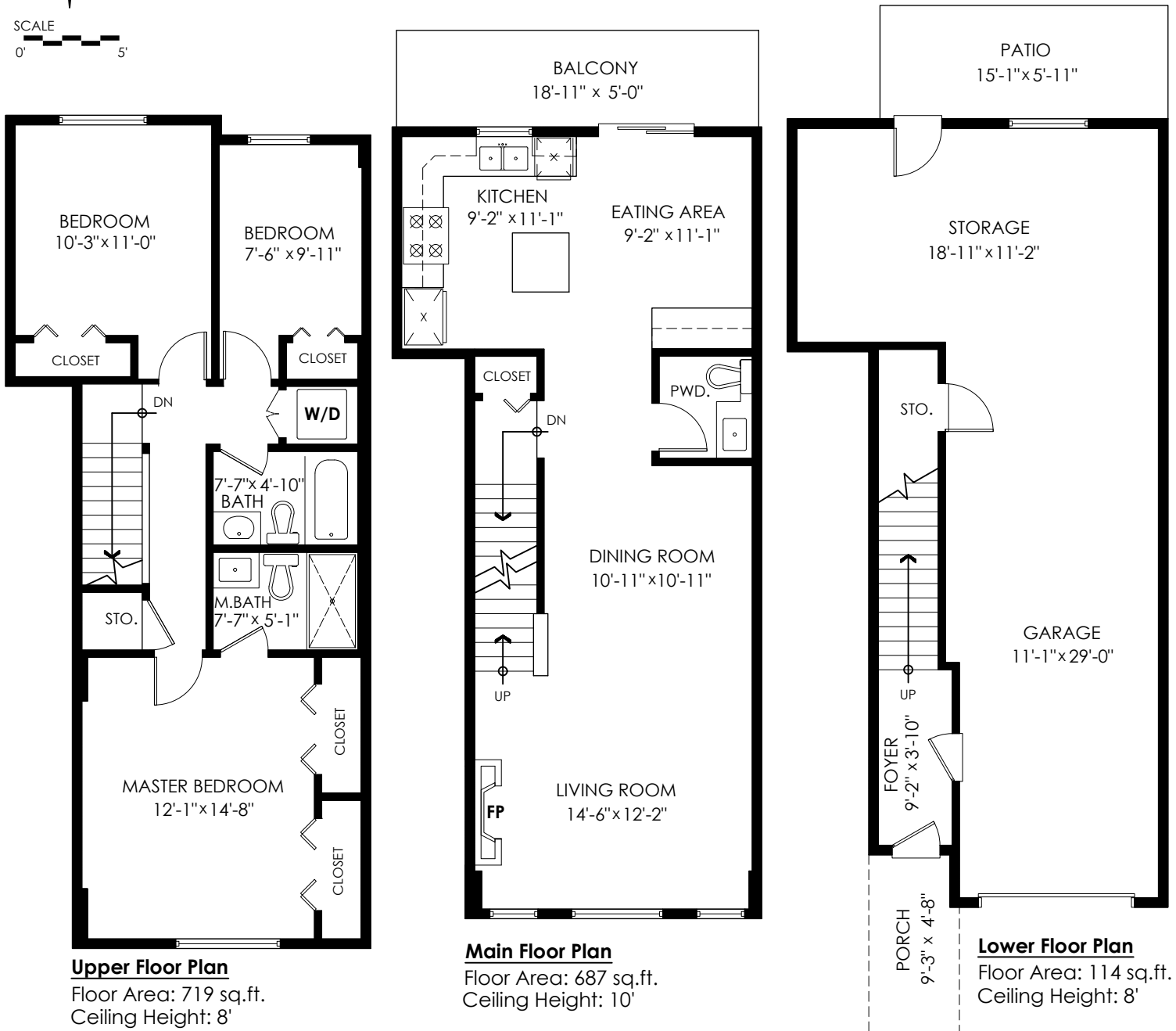
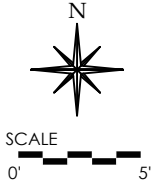


Main Floor:	687 sq.ft.
Upper Floor:	719 sq.ft.
Lower Floor:	114 sq.ft.
<b>Total:</b>	<b>1,520 sq.ft.</b>

**8-2955 156 St, Surrey**

Garage/Sto:	569 sq.ft.
Patio:	89 sq.ft.
Balcony:	95 sq.ft.
Porch:	42 sq.ft.
<b>Total Extras:</b>	<b>795 sq.ft.</b>



**Upper Floor Plan**  
 Floor Area: 719 sq.ft.  
 Ceiling Height: 8'

**Main Floor Plan**  
 Floor Area: 687 sq.ft.  
 Ceiling Height: 10'

**Lower Floor Plan**  
 Floor Area: 114 sq.ft.  
 Ceiling Height: 8'

E&O Insured for \$3,000,000. Total square foot calculated to gross unit area. SQFT based on interior measurements to exterior walls, not taken from original blueprints, may include unfinished area. This is for marketing purposes only and is not intended for architectural/construction use. All details, sizes & placements should be considered approximate within +/- 2% tolerance.