

PLAN OF SURVEY
PART OF LOT 18
REGISTERED PLAN 1 (STINSON BLOCK)
TOWNSHIP OF HILLIER
NOW IN THE MUNICIPALITY OF THE
COUNTY OF PRINCE EDWARD
 IMPERIAL SCALE 1" = 60'
 KEITH WATSON O.L.S.



- LEGEND :**
- DENOTES SURVEY MONUMENT FOUND
 - DENOTES SURVEY MONUMENT PLANTED
 - SB - STANDARD IRON BAR
 - SSB - SHORT STANDARD IRON BAR
 - IB - IRON BAR
 - (1271) - N. E. FRIEL O.L.S.
 - (WT) - WITNESS
 - (m) - MEASURE
 - PF - POST AND WIRE FENCE
 - R - ROTATED TO GRID

IMPERIAL :
 DISTANCES AND COORDINATES SHOWN ON THIS PLAN ARE IN FEET AND CAN BE CONVERTED TO METRES BY MULTIPLYING BY 0.3048.

OBSERVED REFERENCE POINTS DERIVED FROM GPS OBSERVATIONS USING REAL TIME NETWORK (RTN), UTM ZONE 18, NAD83 (CSRS) 1997 COORDINATES TO RURAL ACCURACY PER SEC. 14 (2) OF O. REG 216/10

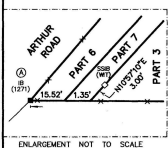
POINT ID	NORTHING	EASTING
A	15,983,277.1	974,562.1
B	15,983,664.6	974,626.7
C	15,984,793.4	974,902.0
D	15,983,996.9	975,741.6

COORDINATES CANNOT, IN THEMSELVES, BE USED TO RE-ESTABLISH THE CORNERS OR BOUNDARIES SHOWN ON THIS PLAN

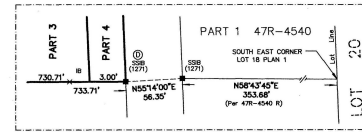
NOTES :
 BEARINGS ARE UTM GRID BEARINGS AND ARE DERIVED FROM OBSERVED REFERENCE POINTS A AND B BY REAL TIME NETWORK OBSERVATIONS UTM ZONE 18, NAD 1983 (CSRS) 1997

DISTANCES SHOWN ARE GROUND DISTANCES AND CAN BE CONVERTED TO GRID BY MULTIPLYING BY A COMBINED SCALE FACTOR OF 1.00097

TO CONVERT LOCAL ASTROMETRIC BEARINGS TO GRID BEARINGS ROTATE 154° CLOCKWISE



ENLARGEMENT NOT TO SCALE



ENLARGEMENT NOT TO SCALE

SURVEYOR'S CERTIFICATE :

I CERTIFY THAT :

- THIS SURVEY AND PLAN ARE CORRECT AND IN ACCORDANCE WITH THE SURVEYS ACT, THE SURVEYORS ACT AND THE LAND TITLES ACT AND THE REGULATIONS MADE UNDER THEM.
- THE SURVEY WAS COMPLETED ON THE 24TH DAY OF APRIL, 2015.

MAY 8, 2015
 Keith Watson
 KEITH WATSON
 ONTARIO LAND SURVEYOR

218 CHURCH STREET
 BELLEVILLE, ONTARIO
WATSON
 LAND SURVEYORS Ltd.
 KRN - 303
 (613) 962 - 9531
 1934316 PROJECT # 8041-F-14

PLAN 47R-8667

RECEIVED AND DEPOSITED
 (Date) May 13, 2015
 Omattis
 REPRESENTATIVE FOR LAND REGISTRAR
 FOR THE LAND TITLES
 DIVISION OF PRINCE EDWARD (47)
 I REQUIRE THIS PLAN TO BE DEPOSITED
 UNDER THE LAND TITLES ACT.
 (Date) MAY 2015
 Keith Watson
 KEITH WATSON
 ONTARIO LAND SURVEYOR

SCHEDULE

PART	DESCRIPTION	PIN No.	AREA
1	PART OF LOT 18 PLAN 1	PART OF PIN No. 55023-0107	2.596 Acres
2	PART OF LOT 18 PLAN 1	PART OF PIN No. 55023-0107	2.602 Acres
3	PART OF LOT 18 PLAN 1	PART OF PIN No. 55023-0107	16.406 Acres
4	PART OF LOT 18 PLAN 1	PART OF PIN No. 55023-0107	0.176 Acres
5	PART OF LOT 18 PLAN 1	PART OF PIN No. 55023-0107	0.266 Acres
6	PART OF LOT 18 PLAN 1	PART OF PIN No. 55023-0107	0.041 Acres
7	PART OF LOT 18 PLAN 1	PART OF PIN No. 55023-0107	0.688 Acres

PARTS 1 TO 7, BOTH INCLUSIVE, COMPRISE ALL OF PIN No. 55023-0107

