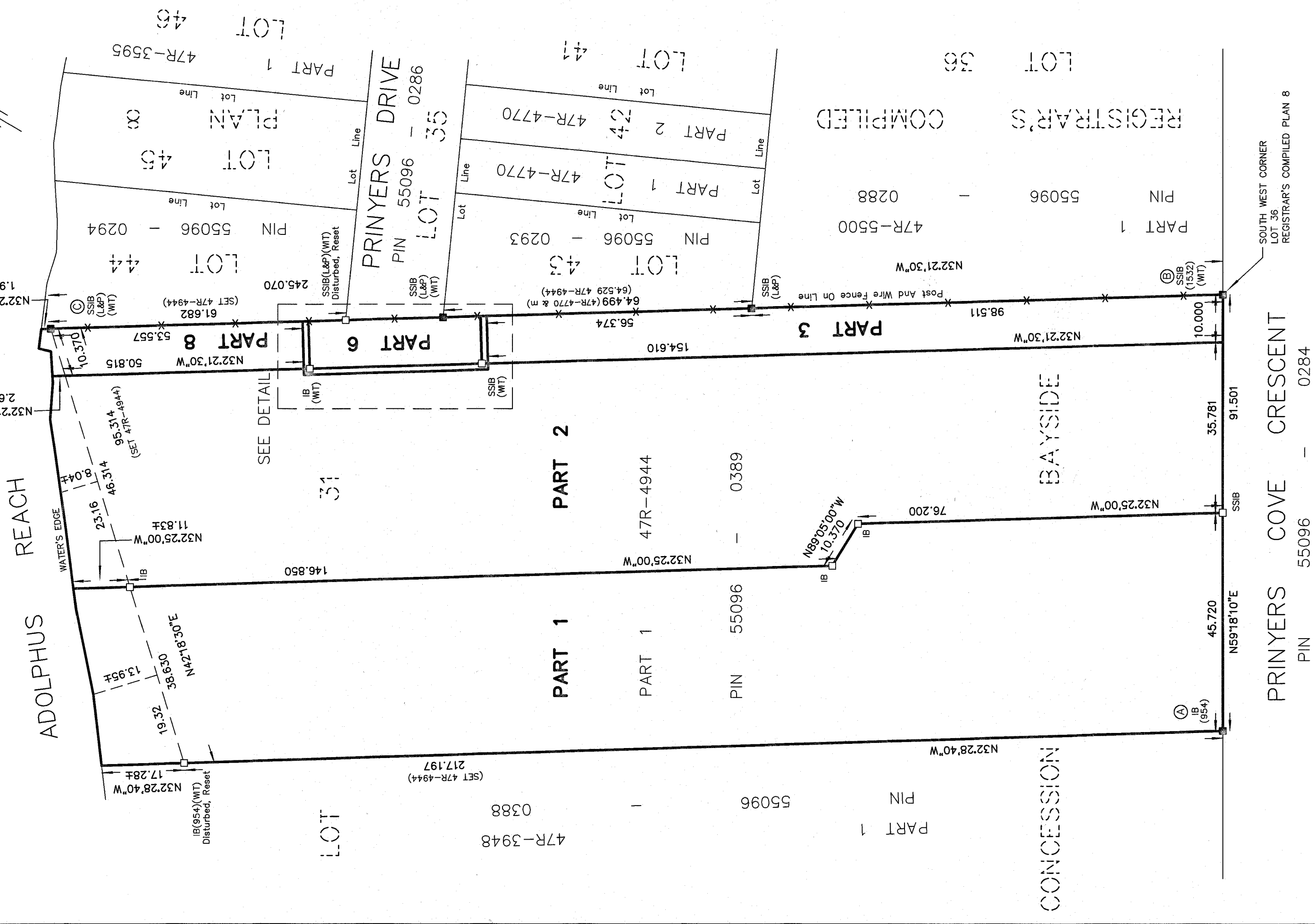


**PLAN OF SURVEY OF
PART OF LOT 31
CONCESSION BAYSIDE
TOWNSHIP OF NORTH MARYSBURGH
NOW IN THE MUNICIPALITY OF
THE COUNTY OF PRINCE EDWARD**

METRIC SCALE 1 : 750



KEITH WATSON O.L.S.



SCHEDULE

PART	LOT/BLOCK	CONCESSION/PLAN	PIN	AREA
1	PART OF LOT 31	CONCESSION BAYSIDE	PART OF 55096-0389	0.950 Ha.±
2	PART OF LOT 31	CONCESSION BAYSIDE	PART OF 55096-0389	1.014 Ha.±
3	PART OF LOT 31	CONCESSION BAYSIDE	PART OF 55096-0389	0.155 Ha.
4	PART OF LOT 31	CONCESSION BAYSIDE	PART OF 55096-0389	3.0 m. ²
5	PART OF LOT 31	CONCESSION BAYSIDE	PART OF 55096-0389	11.0 m. ²
6	PART OF LOT 31	CONCESSION BAYSIDE	PART OF 55096-0389	360.0 m. ²
7	PART OF LOT 31	CONCESSION BAYSIDE	PART OF 55096-0389	3.0 m. ²
8	PART OF LOT 31	CONCESSION BAYSIDE	PART OF 55096-0389	546 m. ²

PARTS 1-8 - COMPRISE ALL OF PIN 55096-0389

PLAN 47R-9380
RECEIVED AND DEPOSITED
(Date) July 14 2023
REPRESENTATIVE FOR LAND REGISTRAR
FOR THE LAND TITLES
DIVISION OF PRINCE EDWARD (47)
I REQUIRE THIS PLAN TO BE DEPOSITED
UNDER THE LAND TITLES ACT.
(Date) JULY 10, 2023
Keith Watson
KEITH WATSON
ONTARIO LAND SURVEYOR

LEGEND :

- DENOTES SURVEY MONUMENT FOUND
- " SURVEY MONUMENT PLANTED
- SIB " STANDARD IRON BAR
- SSIB " SHORT STANDARD IRON BAR
- IB " IRON BAR
- (954) " S. W. ALLAN O.L.S.
- (1532) " GIFFORD, HARRIS O.L.S.
- (L&P) " LLOYD & PURCELL Ltd.
- (WT) " WITNESS
- (m) " MEASURE

METRIC :
DISTANCES AND COORDINATES SHOWN ON THIS PLAN ARE IN METRES AND CAN BE CONVERTED TO FEET BY DIVIDING BY 0.3048.

OBSERVED REFERENCE POINTS DERIVED FROM GPS OBSERVATIONS USING REAL TIME NETWORK (RTN), UTM ZONE 18, NAD83 (CSRS) 2010 COORDINATES TO RURAL ACCURACY PER SEC. 14 (2) OF O. REG 216/10

POINT ID	NORTHING	EASTING
A	4883876.51	348746.12
B	4883923.22	348824.81
C	4884130.23	348693.65

COORDINATES CANNOT, IN THEMSELVES, BE USED TO RE-ESTABLISH THE CORNERS OR BOUNDARIES SHOWN ON THIS PLAN

NOTES :

- BEARINGS ARE UTM GRID BEARINGS AND ARE DERIVED FROM OBSERVED REFERENCE POINTS A AND B BY REAL TIME NETWORK OBSERVATIONS UTM ZONE 18, NAD 83 (CSRS) 2010
- TIES TO THE WATER'S EDGE ARE PERPENDICULAR TO THE WATER'S EDGE ARE PERPENDICULAR TO THE TRAVERSE LINE UNLESS OTHERWISE SHOWN.

SURVEYOR'S CERTIFICATE :

- I CERTIFY THAT :
 1. THIS SURVEY AND PLAN ARE CORRECT AND IN ACCORDANCE WITH THE SURVEYS ACT, THE SURVEYORS ACT AND THE LAND TITLES ACT AND THE REGULATIONS MADE UNDER THEM.
 2. THE SURVEY WAS COMPLETED ON THE 19th DAY OF JUNE, 2023.

JULY 3, 2023
Keith Watson
KEITH WATSON
ONTARIO LAND SURVEYOR

THIS PLAN OF SURVEY RELATES TO AOLS
PLAN SUBMISSION FORM NUMBER V-44269.

WATSON
LAND SURVEYORS Ltd.
218 CHURCH STREET
BELLEVILLE, ONTARIO
K8N - 3C3
(613) 962 - 9521
CREW CHIEF : A. FIELDING
DRAFTED BY : K. COLE
PROJECT N° 12850-B-21