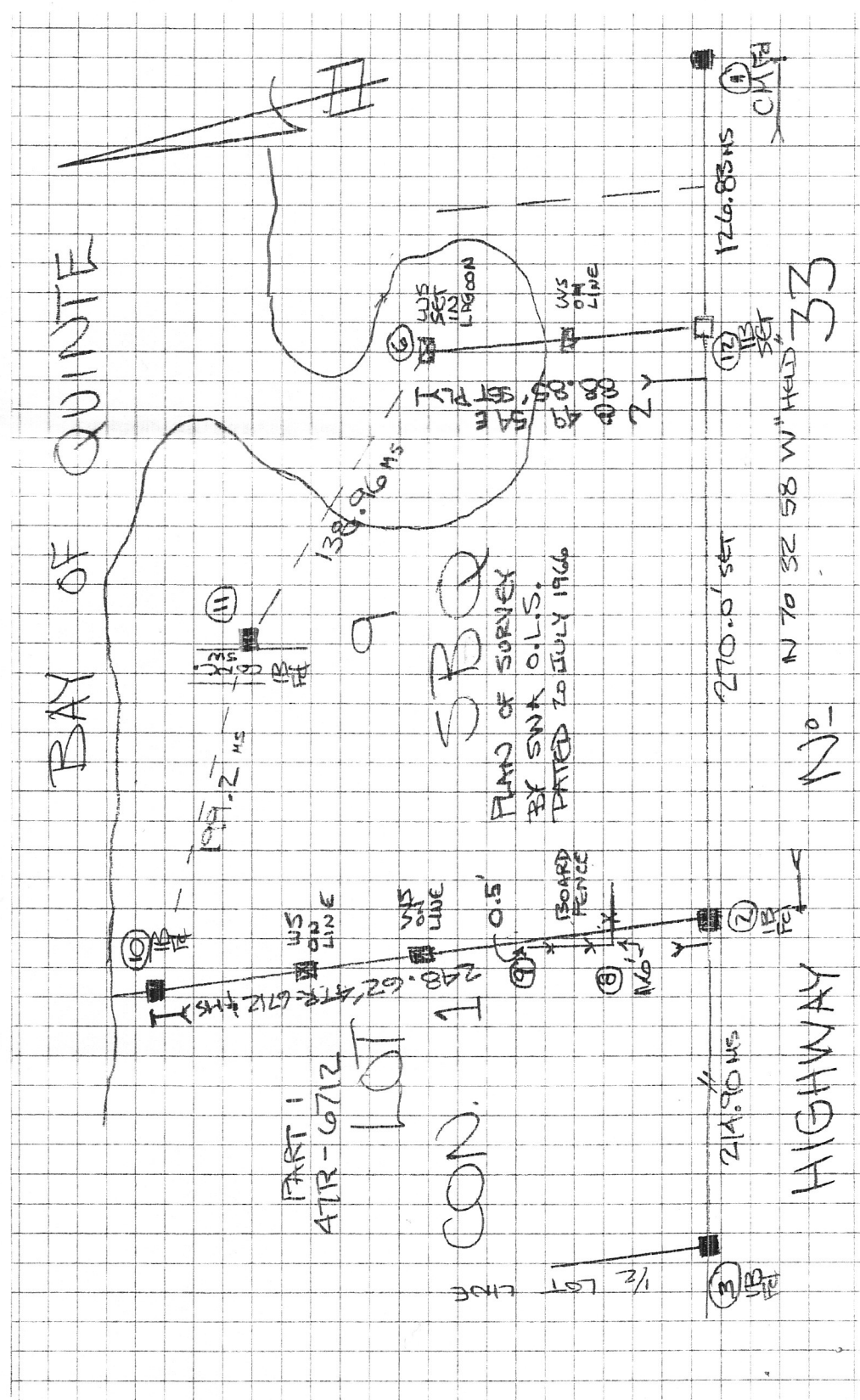


Nov. 20, 2020



BAY OF QUINTE

PART 1  
ATR-6712  
LOT 1

CON. LOT 1

SPD

PLAN OF SURVEY  
EX SWK O.L.S.  
DATED TO JULY 1966

HIGHWAY

N<sub>20</sub>

N 70 S 2 58 W HELD 33

248.62' (S 88° 41' 12\"/>

197.2' NS

NS  
LINE

NS  
LINE

0.5'

BOARD  
FENCE

211.90' NS

270.0' SET

126.85' NS

112' SET

NS  
LINE

NS  
LINE

NS  
LINE

NS  
LINE

NS  
LINE

NS  
LINE

NS  
LINE

NS  
LINE

NS  
LINE

NS  
LINE

NS  
LINE

NS  
LINE

NS  
LINE

NS  
LINE

NS  
LINE

NS  
LINE

NS  
LINE

NS  
LINE

(11)

(12)

(13)

(14)

(15)

(16)

(17)

(18)

(19)

(20)

(21)

(22)

(23)

(24)

(25)

(26)

(27)

(28)

(29)

(30)

(31)

(32)

(33)

(34)

(35)

(36)

(37)

(38)

(39)

(40)

(41)

(42)

(43)

(44)

(45)

(46)

(47)

(48)

(49)

(50)

(51)

(52)

(53)

(54)

(55)

(56)

(57)

(58)

(59)

(60)

(61)

(62)

(63)

(64)

(65)

(66)

(67)

(68)

(69)

(70)

(71)

(72)

(73)

(74)

(75)

(76)

(77)

(78)

(79)

(80)

(81)

(82)

(83)

(84)

(85)

(86)

(87)

(88)

(89)

(90)

(91)

(92)

(93)

(94)

(95)

(96)

(97)

(98)

(99)

(100)

(101)

(102)

(103)

(104)

(105)

(106)

(107)

(108)

(109)

(110)

(111)

(112)

(113)

(114)

(115)

(116)

(117)

(118)

(119)

(120)

(121)

(122)

(123)

(124)

(125)

(126)

(127)

(128)

(129)

(130)

FIELD NOTES

**WATSON**  
LAND SURVEYORS Ltd.

218 CHURCH ST.  
BELLEVILLE, ON. K8N 3C3  
613-962-9521

JOB NO. 12A77 W 20

LOT: <u>PART E 1/2 LOT 9</u>		CON. OR REG'D. PLAN: <u>CON 1 S3Q</u>	
STREET: <u>HIGHWAY NO 33</u>		CITY: MUNICIPALITY OF THE COUNTY OF P.E.	
TWP.: <u>N MARYSBURGH</u>		COUNTY: <u>PRINCE EDWARD</u>	
CLIENT: <u>L. WAGNER</u>		PARTY CHIEF: <u>J MORIN</u> ASST'S.: <u>A GRAY</u>	
LAWYER:		WEATHER:	
TYPE OF SURVEY: <u>FIND BARS MARK SIDELING</u>		FIELD: DATE COMMENCED	INSTRUMENTS & EQUIPMENT <u>GPS</u>
SURVEY CHECKED BY:  O.L.S.		DATE COMPLETED: <u>26 NOV / 20</u>	
INSTRUCTIONS, REPORTS, ETC.			