

PLAN OF SUBJECT OF
**PART OF LOTS 24 AND 25 AND
 PART OF ROAD ALLOWANCE BETWEEN
 LOTS 24 AND 25, CONCESSION 1
 SOUTH OF BLACK RIVER
 TOWNSHIP OF SOUTH MARYSBURGH
 COUNTY OF PRINCE EDWARD**

SCALE 1" = 40' D. HOSCH PICKARD O.L.S. 1990

NOTE

Distances etc. given and also obtained from
 the original plan of Part 22, Plan 478-410
 drawn at 10/14/87 (278)

LEGEND

	Survey Monument Plotted
	Survey Monument Found
	Boundary Survey
	Registered Plan Number
	South of Black River
	Measured

SURVEYOR'S CERTIFICATE

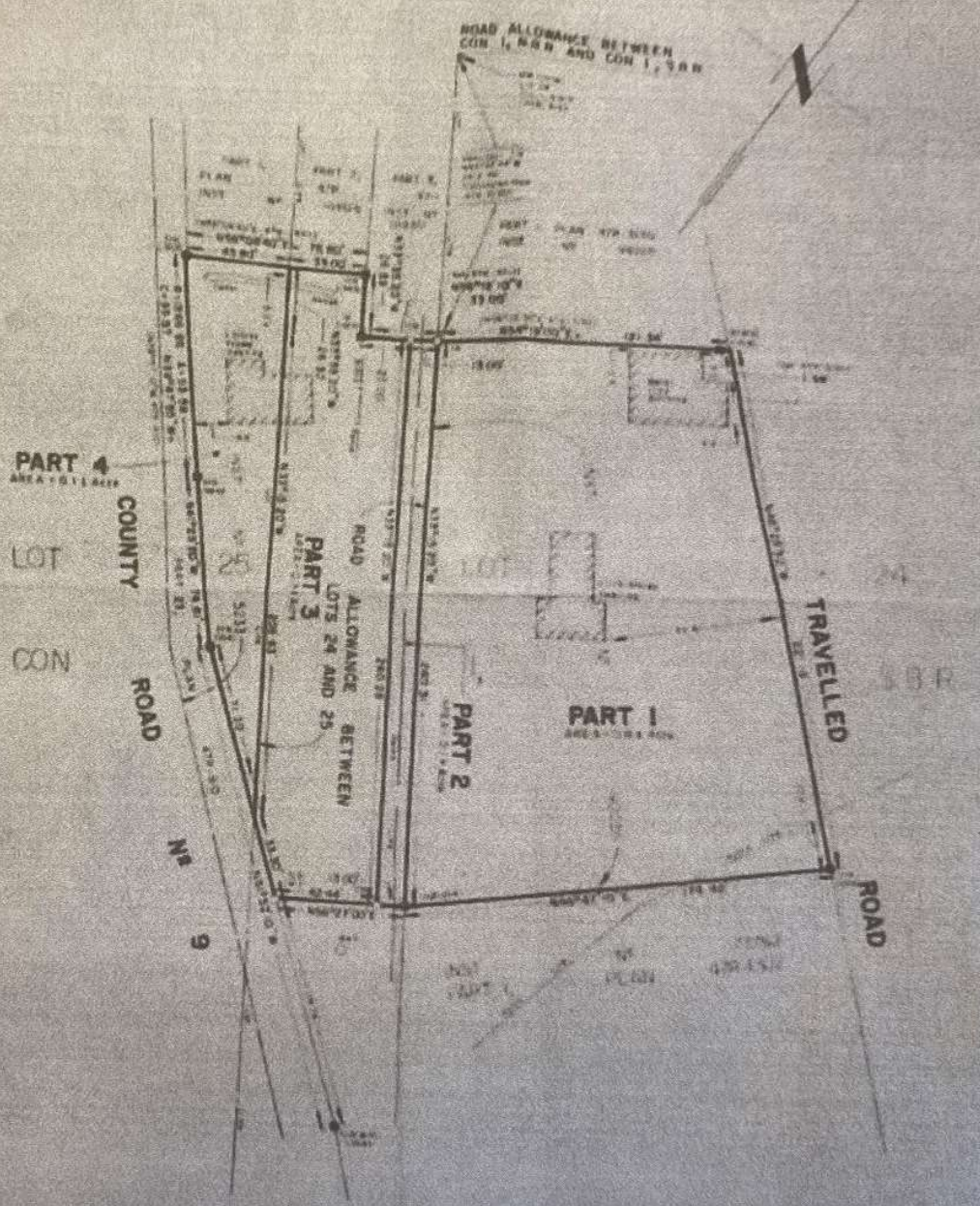
The field survey registered as this plan was
 completed on the 10th day of July, 1990.

B. J. Pickard
 D. HOSCH PICKARD
 Registered Professional Surveyor

July 14, 1990



1990-1991 - HUME and PICKARD LTD. 1990



HUME and PICKARD LTD. 240 Church St., Summersburg 1001 304-4302 179 Main St., Miramichi 1000 478-2002	DRAWN BY: D. DUFFY
	PARTY CHECKED BY: P. HARRIS
	PROJECT NO.: 900000