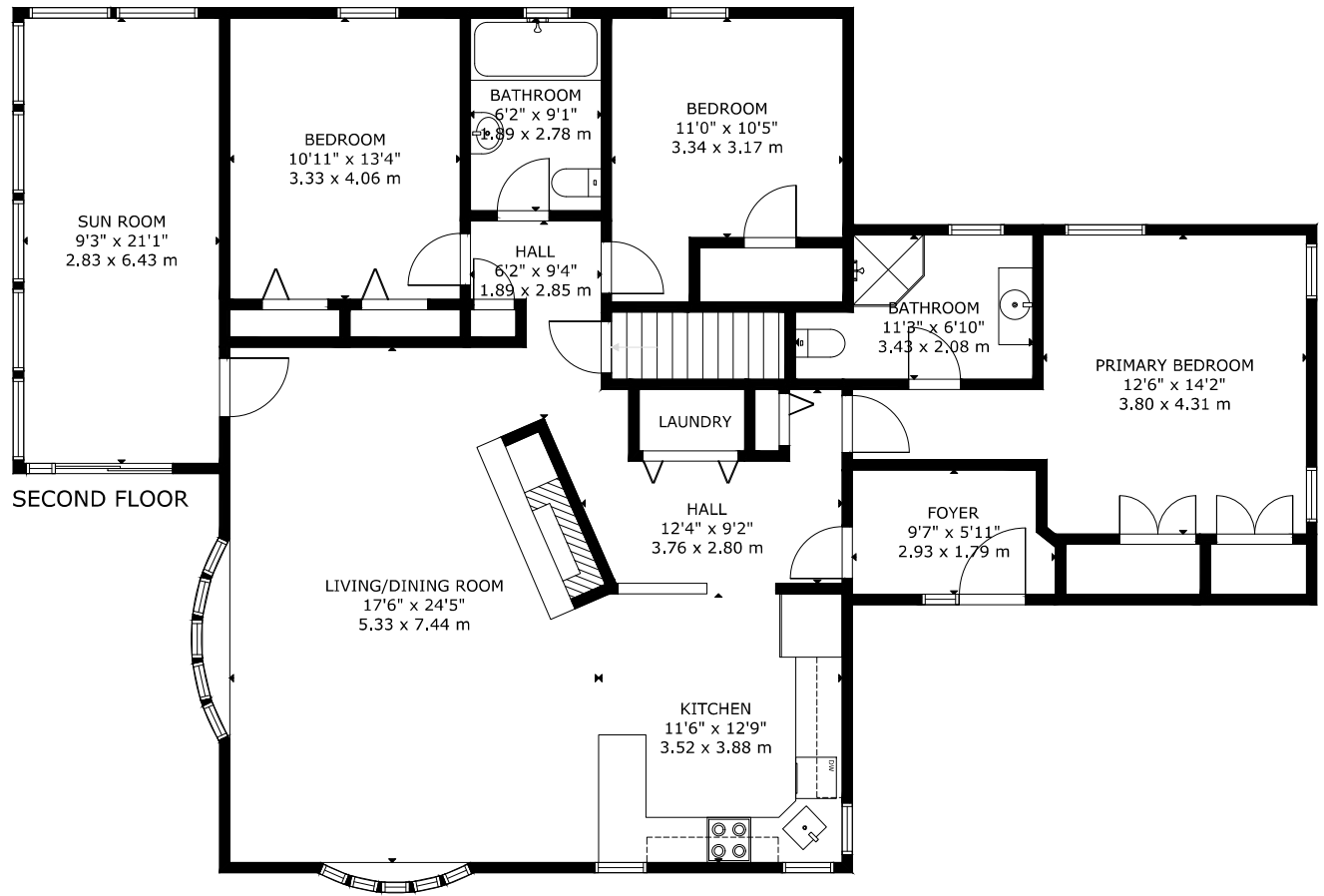


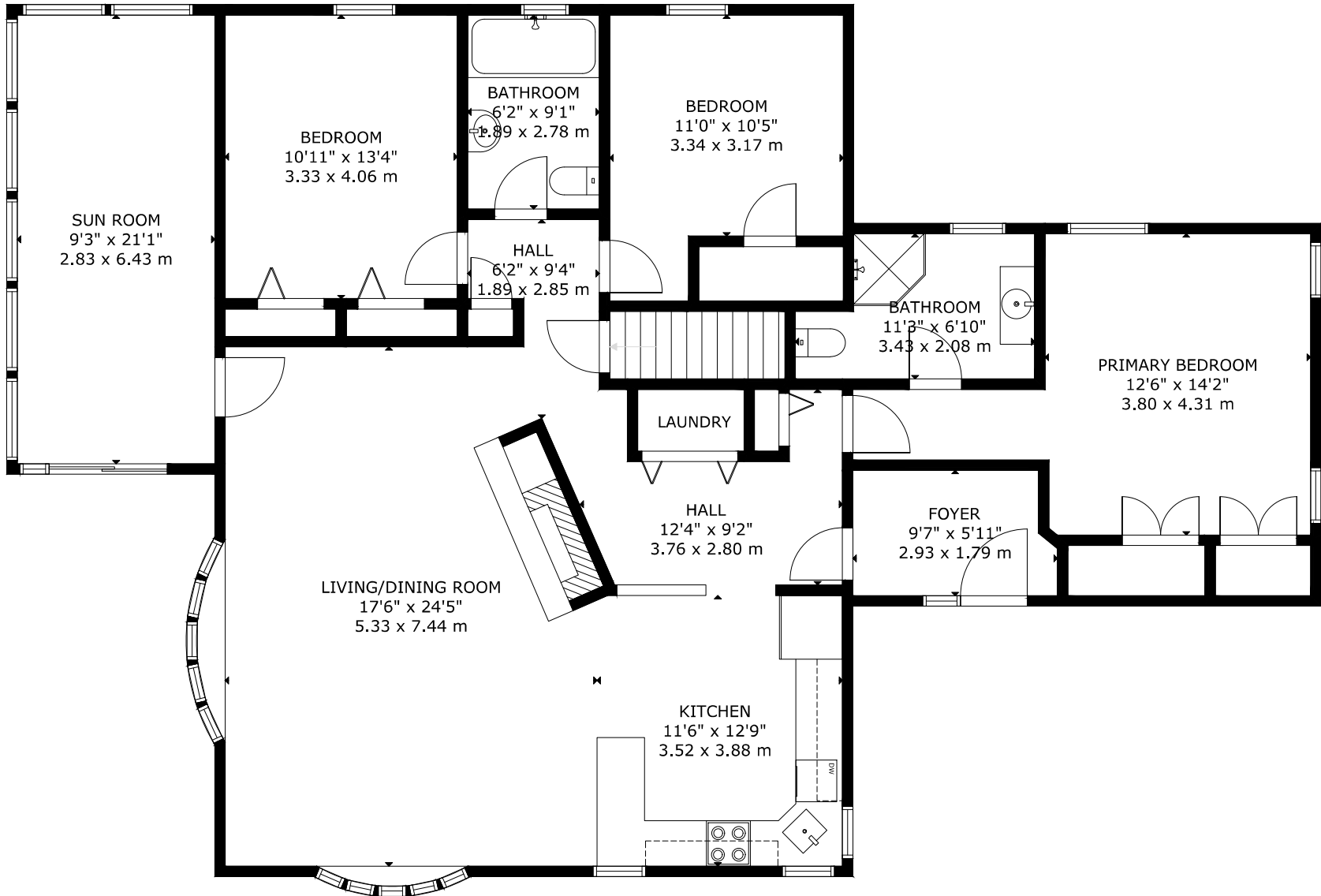
FIRST FLOOR



SECOND FLOOR

GROSS EXTERNAL AREA
 TOTAL: 280 m²/3,015 sq.ft
 BASEMENT: 108 m²/1,159 sq.ft, BASEMENT: 172 m²/1,856 sq.ft
 SIZE AND DIMENSIONS ARE APPROXIMATE, ACTUAL MAY VARY





SUN ROOM
9'3" x 21'1"
2.83 x 6.43 m

BEDROOM
10'11" x 13'4"
3.33 x 4.06 m

BATHROOM
6'2" x 9'1"
1.89 x 2.78 m

BEDROOM
11'0" x 10'5"
3.34 x 3.17 m

HALL
6'2" x 9'4"
1.89 x 2.85 m

BATHROOM
11'3" x 6'10"
3.43 x 2.08 m

PRIMARY BEDROOM
12'6" x 14'2"
3.80 x 4.31 m

LAUNDRY

HALL
12'4" x 9'2"
3.76 x 2.80 m

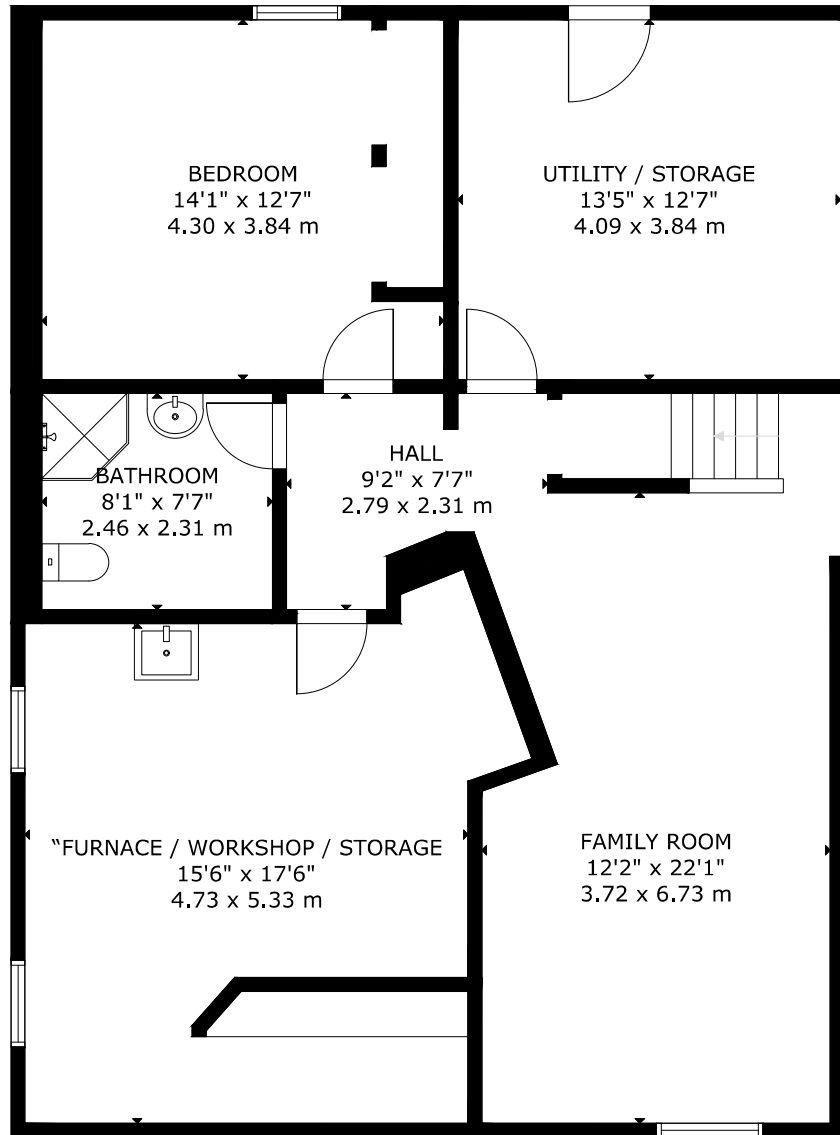
FOYER
9'7" x 5'11"
2.93 x 1.79 m

LIVING/DINING ROOM
17'6" x 24'5"
5.33 x 7.44 m

KITCHEN
11'6" x 12'9"
3.52 x 3.88 m

GROSS EXTERNAL AREA
TOTAL: 280 m²/3,015 sq.ft
BASEMENT: 108 m²/1,159 sq.ft, BASEMENT: 172 m²/1,856 sq.ft
SIZE AND DIMENSIONS ARE APPROXIMATE, ACTUAL MAY VARY





GROSS EXTERNAL AREA
 TOTAL: 280 m²/3,015 sq.ft
 BASEMENT: 108 m²/1,159 sq.ft, BASEMENT: 172 m²/1,856 sq.ft
 SIZE AND DIMENSIONS ARE APPROXIMATE, ACTUAL MAY VARY

BASEMENT

