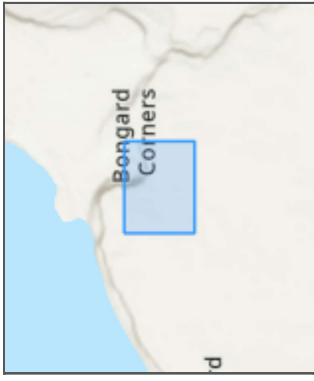
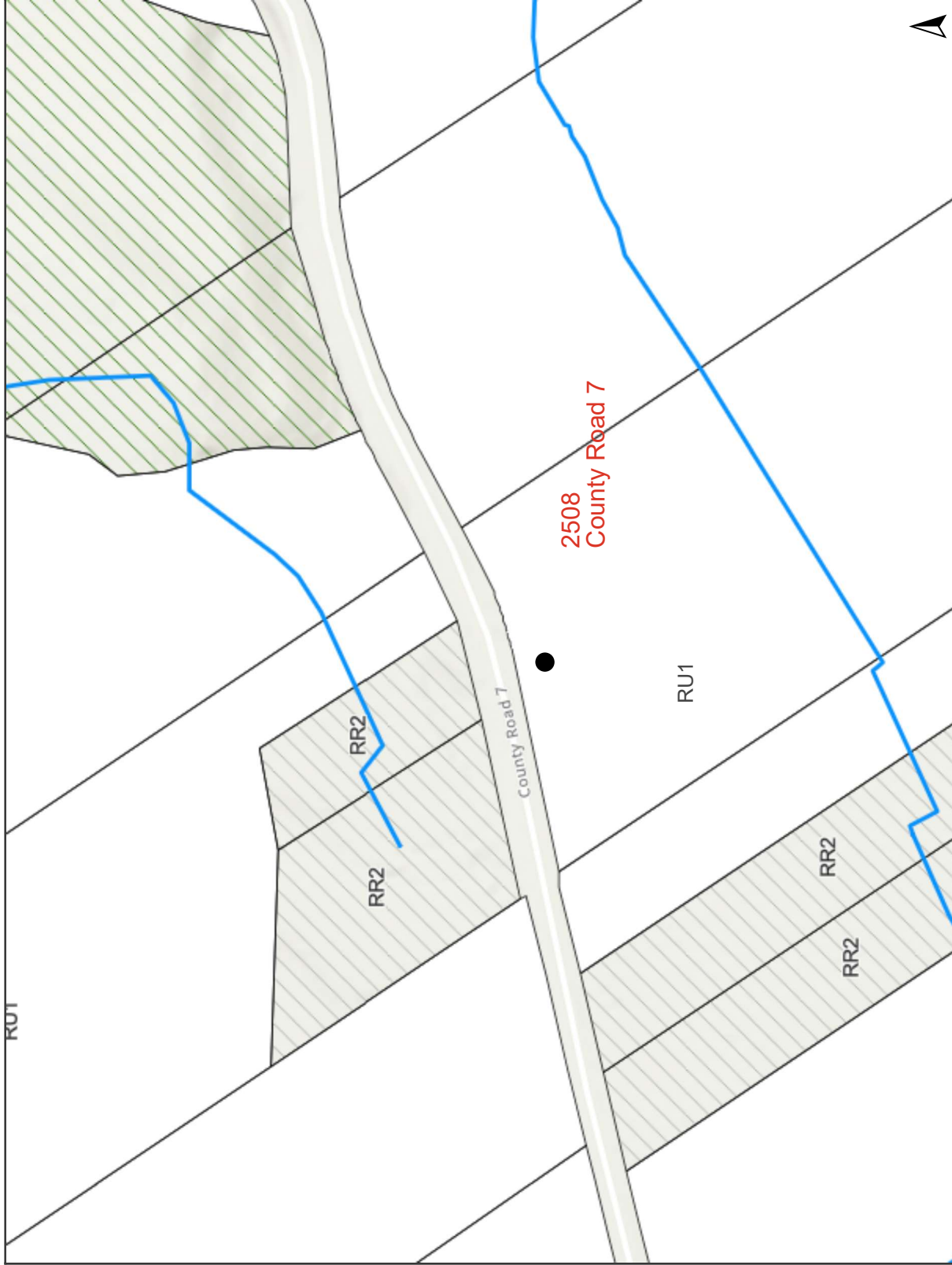


Prince Edward County GIS (Public)



Land Information

Planning & Development

Watercourse (EP Zone applies 15 m on either side)

Zoning (By-law No. 1816-2006)

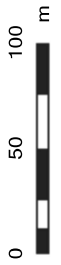
- RU1 - RURAL 1
- RU3 - RURAL 3
- RU2 - RURAL 2
- R1 - URBAN
- RESIDENTIAL TYPE 1
- R2 - URBAN
- RESIDENTIAL TYPE 2
- R3 - URBAN
- RESIDENTIAL TYPE 3
- HR - HAMLET
- RESIDENTIAL
- LSR - LIMITED

Notes

332 Picton Main Street, Picton
 ON, K0K 2T0
 Hours: 8:30 am to 5 pm,
 Monday – Friday
 Telephone: 613.476.2148 ext.
 1023 / 613.962.9108 ext. 1023
www.thecounty.ca



Prince Edward County GIS



Scale 1: 4945

THIS MAP IS NOT TO BE USED FOR NAVIGATION

This map was created by a user from an online mapping site and is meant for reference only. The accuracy, currency and reliability of the data layers on this map cannot be guaranteed. The Corporation of the County of Prince Edward (PEC) does not assure the accuracy or completeness of the data provided. This map was produced by PEC and contains content copyrighted by Queen's Printer for Ontario, 2014. The DRAPE Imagery from 2008 is copyrighted by Groupe Alta. All rights reserved. The map uses the WGS 1984 Web Mercator Auxiliary Sphere projection and coordinate system.

Esri Community Maps Contributors, Province of Ontario, Esri Canada, Esri, TomTom, Garmin, SafeGraph, GeoTechnologies, Inc, METINASA, USGS, EPA, NPS, US Census Bureau, USDA, USFWS, NRCan, Parks Canada