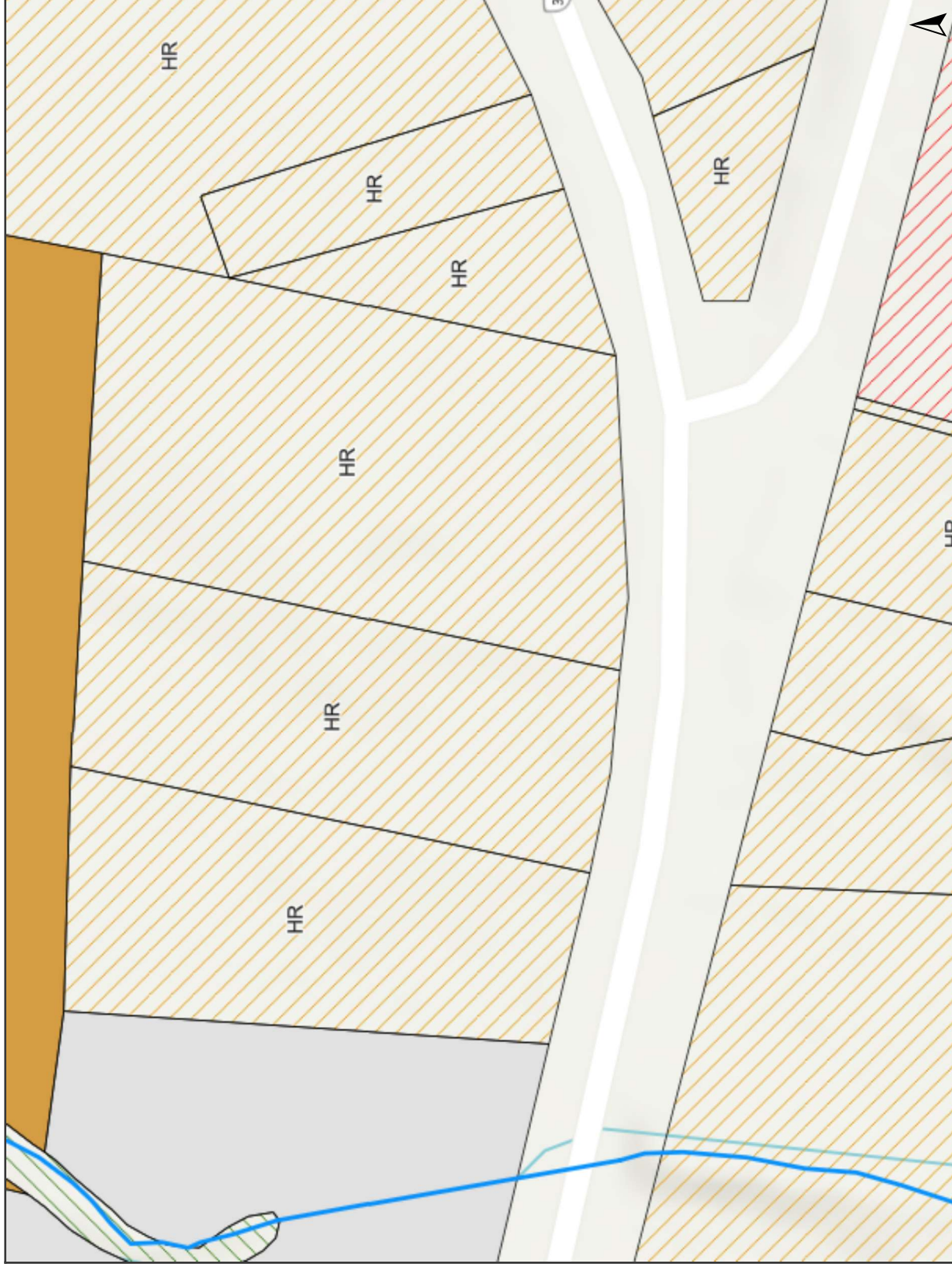
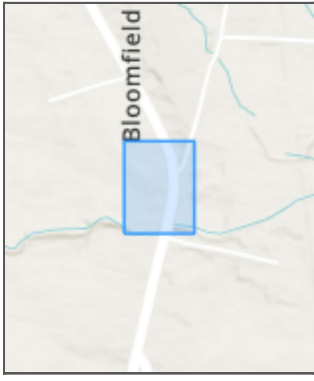


# Prince Edward County GIS (Public)



## Land Information

### Planning & Development

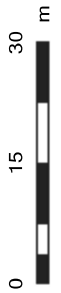
Watercourse (EP Zone applies 15 m on either side)

### Zoning (By-law No. 1816-2006)

- RU1 - RURAL 1
- RU3 - RURAL 3
- RU2 - RURAL 2
- R1 - URBAN
- RESIDENTIAL TYPE 1
- R2 - URBAN
- RESIDENTIAL TYPE 2
- R3 - URBAN
- RESIDENTIAL TYPE 3
- HR - HAMLET
- RESIDENTIAL
- LSR - LIMITED

## Notes

332 Picton Main Street, Picton  
ON, K0K 2T0  
Hours: 8:30 am to 5 pm,  
Monday – Friday  
Telephone: 613.476.2148 ext.  
1023 / 613.962.9108 ext. 1023  
www.thecounty.ca



Scale 1: 1296

This map was created by a user from an online mapping site and is meant for reference only. The accuracy, currency and reliability of the data layers on this map cannot be guaranteed. The Corporation of the County of Prince Edward (PEC) does not assure the accuracy or completeness of the data provided. This map was produced by PEC and contains content copyrighted by Queen's Printer for Ontario, 2014. The DRAPE Imagery from 2008 is copyrighted by Groupe Alta. All rights reserved. The map uses the WGS 1984 Web Mercator Auxiliary Sphere projection and coordinate system.

THIS MAP IS NOT TO BE USED FOR NAVIGATION

Prince Edward County GIS

Esri, NASA, NGA, USGS, FEMA