

REF. SO. CON. 1, N.B.R. S.M. 89-105
 I REQUIRE THIS PLAN TO BE DEPOSITED UNDER THE REGISTRY ACT

PLAN 47R-4685
 RECEIVED AND DEPOSITED

November 20, 1989
 D.J. Smith
 D.O. SMITH-O.L.S.
 FOR THE REGISTRY DIVISION OF PRINCE EDWARD (47)

November 20, 1989
 D.J. Smith
 D.O. SMITH-O.L.S.

PARTS SCHEDULE

PART	LOT	CON.	INST. N°
1			
2	26	1, N.B.R.	82902
3			
4			

PLAN OF SURVEY OF

**PART OF LOT 26,
 CONCESSION 1,
 NORTH OF BLACK RIVER,
 TOWNSHIP OF SOUTH MARYSBURGH,
 COUNTY OF PRINCE EDWARD.**

Scale 1" = 60'

STEWART W. ALLAN LTD. 1989

CAUTION : THIS PLAN IS NOT A PLAN OF SUBDIVISION WITHIN THE MEANING OF THE PLANNING ACT.

SURVEYOR'S CERTIFICATE

I, CERTIFY THAT:
 1) This survey and plan are correct and in accordance with the Surveys Act and the Registry Act and the regulations made thereunder.
 2) The survey was completed on the 24th day of November, 1989.

D.J. Smith
 DONALD G. SMITH
 Ontario Land Surveyor

November 28, 1989

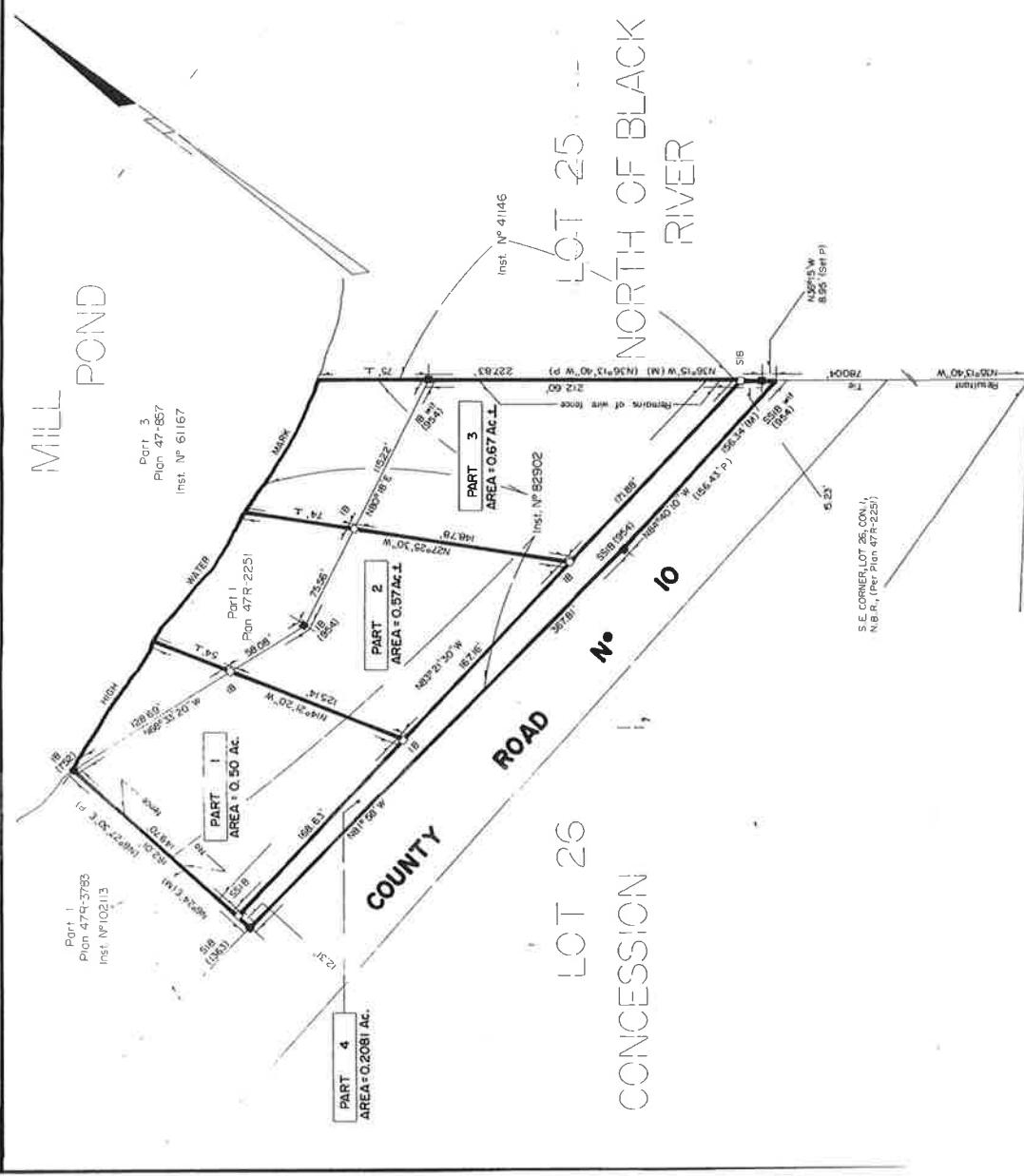
NOTE :

Bearings are astronomic and are referred to the southerly limit of Part 1, Plan 47R-2251 having a bearing of N81° 56' W.

- - denotes found survey monuments
- - denotes planned survey monuments
- P - Plan 47R-2251
- M - Measured

STEWART W. ALLAN LTD.
 ONTARIO LAND SURVEYOR

24 GROVE STREET,
 BELLEVILLE, ONTARIO,
 K8N 1W2
 (613) 968 8306



66' ROAD ALLOWANCE BETWEEN CONCESSION 1, NORTH OF BLACK RIVER AND CONCESSION 1, SOUTH OF BLACK RIVER