

# FOR Sale

142 Sutherland Close,  
Red Deer



Scan code for more  
info on this home



5 Bedrooms



3 Bathrooms



1,650 sq.ft.

Located in the highly sought-after neighbourhood of Sunnybrook South, this spacious modified Bi-level offers 5 Bedrooms, 3 Bathrooms, a double attached Garage, and a fully finished walk-out basement—perfect for families who need more space and want a location that fits their lifestyle. With 1,650 Sq.Ft. above grade and backing onto undeveloped green space with no rear neighbours, this move-in ready home includes central A/C, in-floor heat in the basement, and a layout that checks all the boxes.

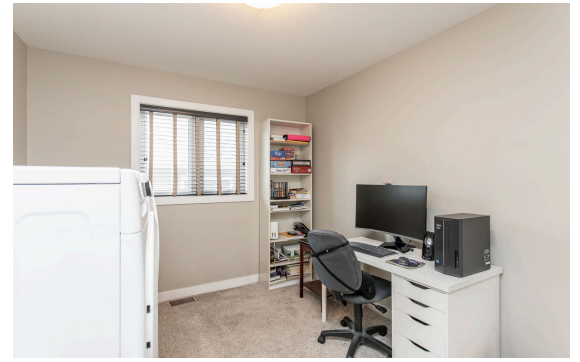
**RE/MAX**  
real estate central alberta



**Roxann Klepper**  
RE/MAX REALTOR®

403-872-4546 | roxann@roxyk.ca





## PROPERTY DETAILS

LOT SIZE	4,764 SQ.FT
YEAR BUILT	2010
GARAGE	23'1"x22'7"
TAXES	\$5,437

## PROPERTY FEATURES

- Gas Fireplace
- Walk-Out Basement
- Wet Bar
- Air Conditioning
- No Rear Neighbours



## SPACIOUS HOME IN SUNNYBROOK SOUTH

Inside, you'll find vaulted ceilings, engineered hardwood floors, and large windows that fill the home with natural light. The Kitchen is designed for everyday function and hosting alike, with granite counters, a large centre island, corner pantry, and a new gas stove installed in 2024. The Dining Room opens onto a dura-deck with gas line for BBQ, while the cozy Living Room features a gas fireplace—making the main living area the true heart of the home.

The main floor includes two Bedrooms and a full 4 Piece Bath, with one Bedroom currently used as a Laundry Room (alternate hook-ups available in the basement). The Primary Suite is privately located on its own level, complete with a walk-in closet and a 4 Piece Ensuite that features dual sinks and a massive walk-in shower.

Downstairs, the fully finished walk-out basement offers high ceilings, in-floor heat, and a spacious Rec Room with wet bar—perfect for family game nights or entertaining friends. Two additional Bedrooms, another full Bath, and a large storage room provide all the extra space your family needs. Step outside to a fully fenced backyard with a lower deck that's hot tub-ready, plus a handy shed for your tools and seasonal gear.