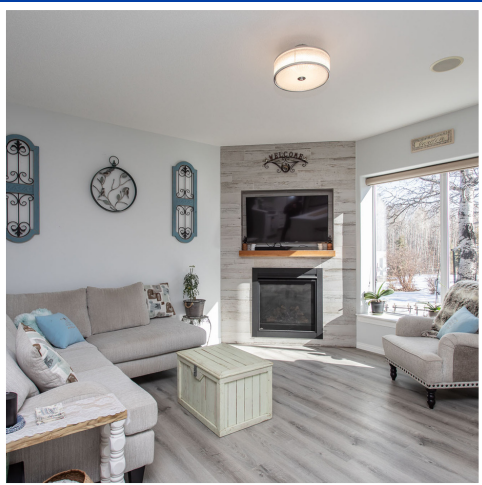


# 420043 RANGE ROAD 250, PONOKA COUNTY

STUNNING  
ACREAGE  
WITH LAKE  
ACCESS

\$835,000

[www.rr250.info](http://www.rr250.info)



*Roxann Klepper*

REALTOR®

403-872-4546



*Kim Fox*

REAL ESTATE TEAM



## BEAUTIFUL 2-STOREY WITH SHOP

Welcome to your tranquil retreat nestled on 7.22 acres of picturesque land, offering an escape from the hustle and bustle of city life. This meticulously updated 2-story home boasts a Triple Attached Garage and a 48X36 shop, perfect for your family's vehicles and storage needs. Inside, you'll find 5 Bedrooms and 2.5 Baths, ideal for families seeking comfort. The main level features a stunning Kitchen with top-of-the-line Samsung Bespoke appliances, Corian countertops, and new cabinets.

Enjoy gatherings in the Living Room with a cozy gas fireplace and large windows. Step outside to a serene oasis with fruit trees and a labyrinth garden. The main level also offers a luxurious Primary Bedroom and an additional Bedroom/home office. Upstairs, find 3 Bedrooms, a Bonus Room, and a Family Room. Updates include vinyl plank floors, fresh paint, and modern fixtures. Outside, enjoy lake views and a new shop. This tranquil property offers total privacy, making it perfect for families seeking space in a remote setting.



403-872-4546

[www.kimfoxrealestateteam.ca](http://www.kimfoxrealestateteam.ca)



5



2.5



2,781

LOT SIZE	7.22 ACRES
YEAR BUILT	2004
GARAGE	23'2"X30'2"
SHOP	48'X36'
TAXES	\$2,323

### PROPERTY FEATURES

- Central A/C
- New Vinyl Plank Floors
- Fresh Paint
- New HE Boiler System
- New Breaker Panel
- New Kitchen Cabinets, Appliances, & Counters



RE/MAX real estate central alberta  
4440 49 Ave, Red Deer, AB T4N 3W6