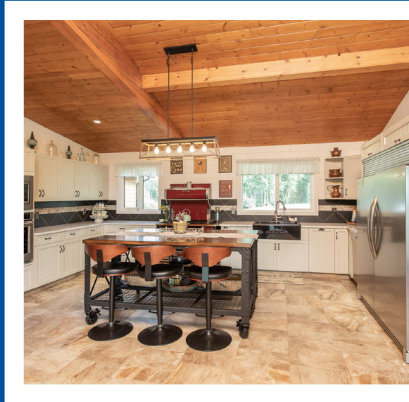


25006 Township Road 382, Lacombe County

PRIVATE
PARADISE ON
4.2 ACRES!

\$869,900

www.25006.info



Roxann Klepper

REALTOR®

403-872-4546

RE/MAX
real estate central alberta

Kim Fox

REAL ESTATE TEAM



Spacious Walk-Out Bungalow!

Find everything you need on this 4.2 acre parcel just 15 minutes from Red Deer! With over 4,200 Sq.Ft. of space, there is room for everyone and everything. Enjoy the open floor plan with vaulted ceilings, tons of natural light, and tons of updates and renovations.

A wrap-around porch on all 3 sides allows you to pick your view and settle in for a relaxing afternoon or host family and friends in the outdoor Kitchen. The pastures beyond provide space for horses, and a 60x70 shop is in amazing condition and the perfect spot for tinkering or storage. A fenced garden area with a greenhouse allows you to improve your green thumb and cultivate your own harvest year-after-year.

In floor heat and a high-efficiency boiler system will keep you warm all winter long, while the central air condition provides relief on sweltering summer days.



ROXANN KLEPPER
403-872-4546
www.kimfoxrealestateteam.ca



5



3



2,426

YEAR BUILT 1990

GARAGE 32'4" X 21'6"

LOT SIZE 4.2 ACRES

TAXES \$3,660

PROPERTY FEATURES

- ✓ In-Floor Heat
- ✓ New Cabinets
- ✓ Quartz Counters
- ✓ Central A/C
- ✓ 60x70 Shop
- ✓ Horse Pasture & Waterer
- ✓ Fenced Garden with Greenhouse



RE/MAX real estate central alberta
4440 49 Ave, Red Deer, AB T4N 3W6