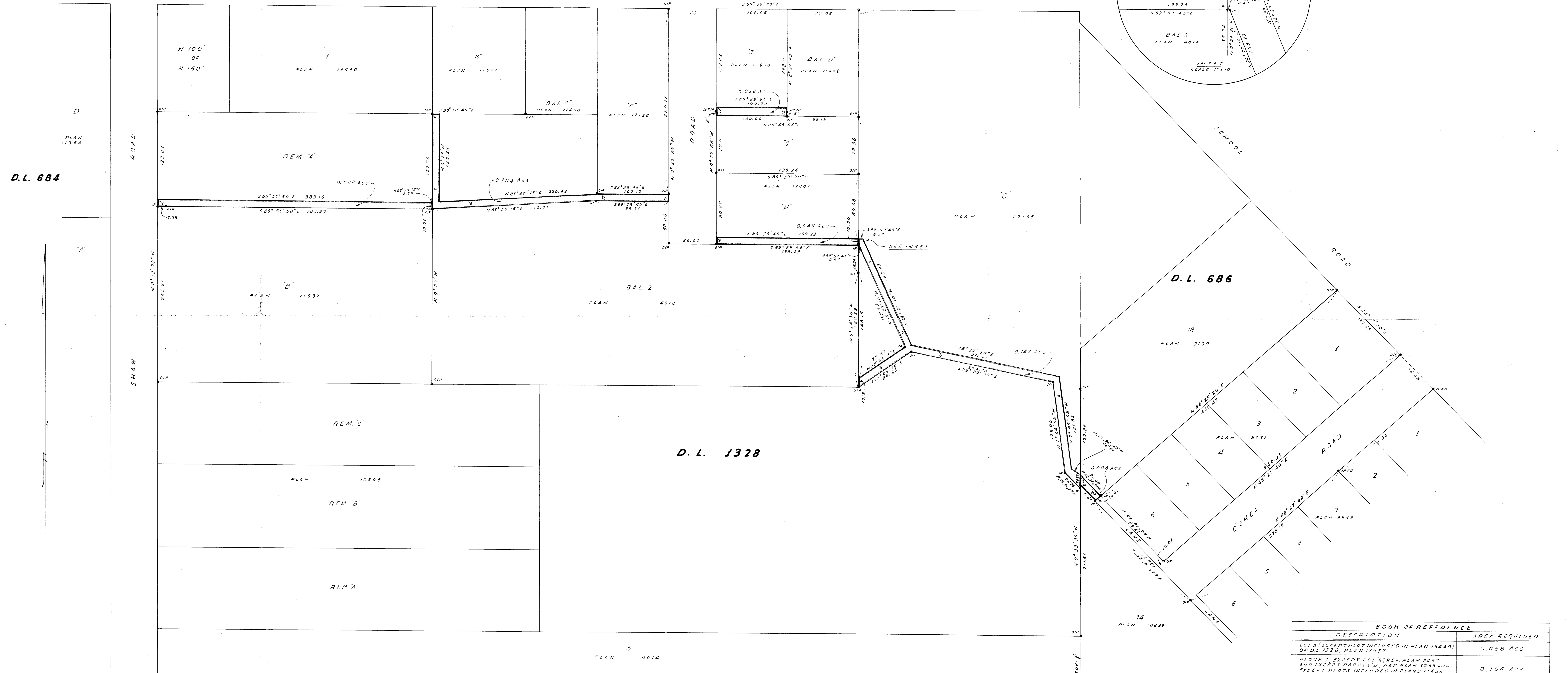


**PLAN OF RIGHTS OF WAY THROUGH PARTS OF DISTRICT LOTS 686 AND 1328, GROUP ONE,  
NEW WESTMINSTER DISTRICT  
PURSUANT TO SECTION 531 OF THE MUNICIPAL ACT**

SCALE: 1 INCH = 50 FEET

Reference Plan 12585

Deposited in the Land Registry  
Office of Vancouver, B.C. this  
25<sup>th</sup> day of May, 1972  
*D. Hobbs*  
Registrar



D.L. 684

D.L. 686

D.L. 1328

I, C.H. Hobbs, of North Vancouver, B.C., a British Columbia Land Surveyor, make oath and say that I was present at and did personally superintend the survey represented by this plan, and that the survey and plan are correct. The said survey was completed on the 2<sup>nd</sup> day of May, 1972.

*C. Hobbs*

Sworn before me this 25<sup>th</sup> day of May A.C. 1972

*E. P. ...*

A Notary Public in and for the Province of British Columbia.

**LEGEND**  
Bearings Astronomic and derived from Plan 11937  
Old Iron Post found shown thus: ●  
Old Wood Post " " " " ●  
Iron Post " " " " ●  
Iron Post set " " " " ●

THIS PLAN LIES WITHIN THE SUNSHINE COAST REGIONAL DISTRICT

BOOK OF REFERENCE	
DESCRIPTION	AREA REQUIRED
LOT A (EXCEPT PART INCLUDED IN PLAN 13440) OF D.L. 1328, PLAN 11937	0.088 ACS
BLOCK 2, EXCEPT PLOT A, REF. PLAN 2457 AND EXCEPT PARCELS 1, 2, 3, 4, 5 AND EXCEPT PARTS INCLUDED IN PLANS 11458, 11881, 12128 AND 12401; D.L. 1328, PLAN 4014	0.104 ACS
LOT J, BLOCK 2, D.L. 1328, PLAN 12670	0.028 ACS
PARCEL H, BLOCK 2, D.L. 1328, PLAN 12401	0.046 ACS
BLOCK C OF DISTRICT LOTS 686 AND 1328, PLAN 12195	0.142 ACS
LOT 18, BLOCK 1, D.L. 686, PLAN 3130	0.088 ACS

ANTONY C. LOACHE ASSOCIATES  
B.C. LAND SURVEYORS  
NORTH VANCOUVER, B.C.