



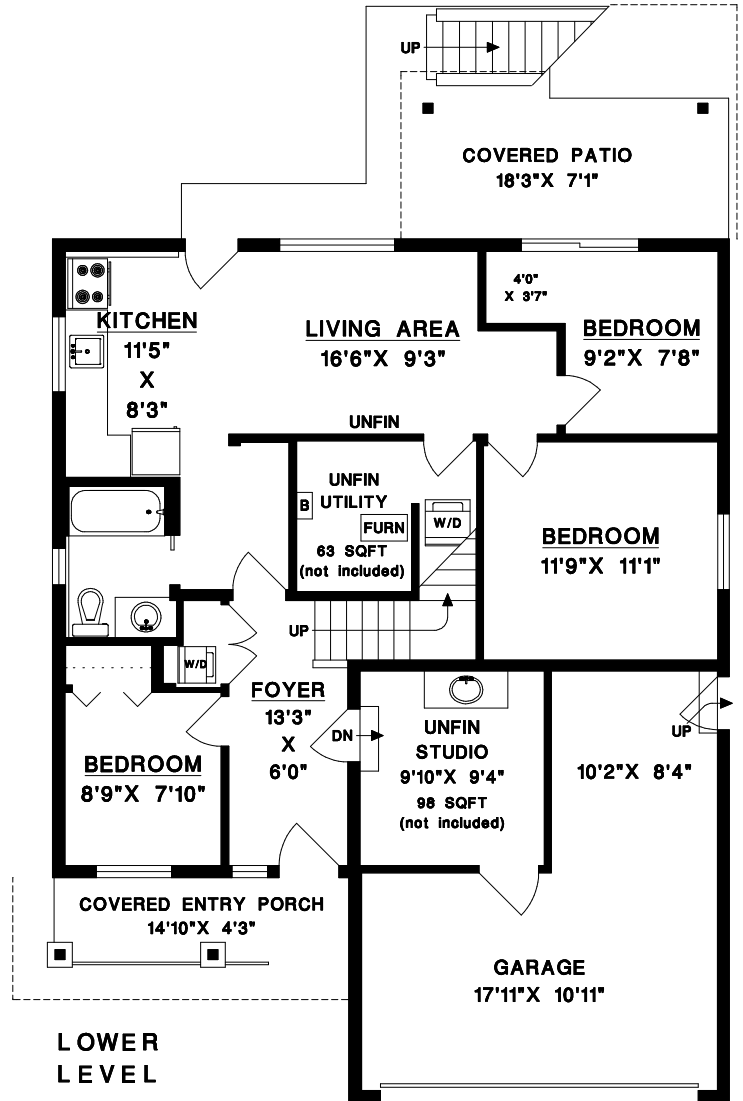
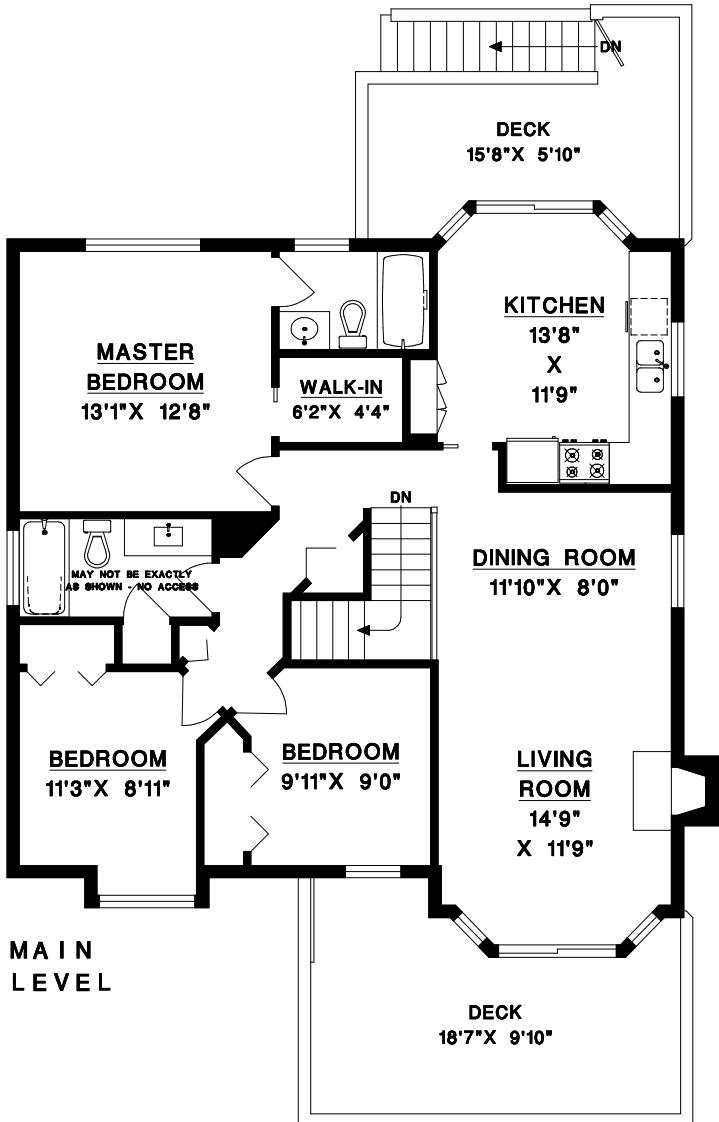
TONY BROWTON
PERSONAL REAL ESTATE CORPORATION

RE/MAX
CITY REALTY

1717 JENSEN ROAD
GIBSONS, BC

604-418-2695

tbrowton@trueblurealty.ca



MAIN LEVEL	1165 SQFT
LOWER LEVEL*	839 SQFT
TOTAL	2004 SQFT

UTILITY (UNFINISHED)	63 SQFT
STUDIO (UNFINISHED)	98 SQFT
GARAGE	313 SQFT
BALCONY	177 SQFT
DECK	120 SQFT
COVERED PATIO	155 SQFT

* INCLUDES UNFINISHED FURNACE ROOM (69 SQFT)
LOWER LEVEL AREA INCLUDES SUITE- 596 SQFT



© NO REPRODUCTION OF THIS PLAN IN ANY FORM IS ALLOWED UNLESS PERMISSION IS GIVEN BY:
MEASURE MASTERS
RICHMOND / DELTA
(604) 948-1888
1717JENS 8116 AUG 29/20

