



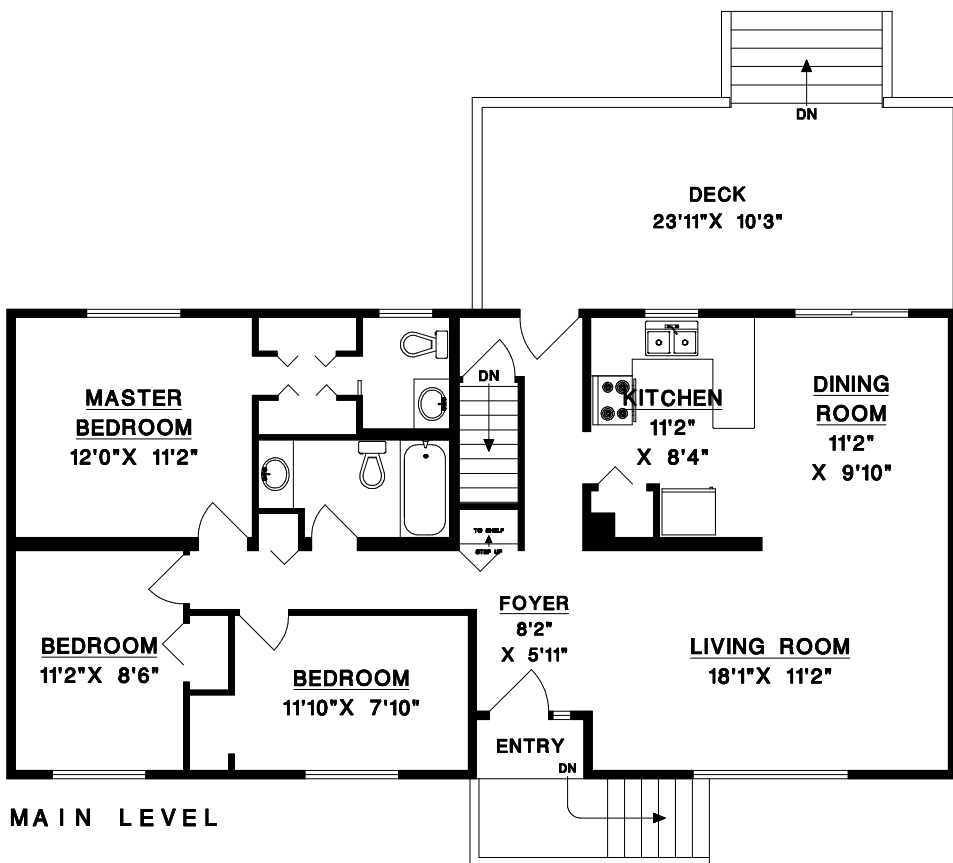
RE/MAX  
CITY REALTY

**TONY BROWTON**  
PERSONAL REAL ESTATE CORPORATION

604-418-2695

tbrowton@truebluerealty.ca

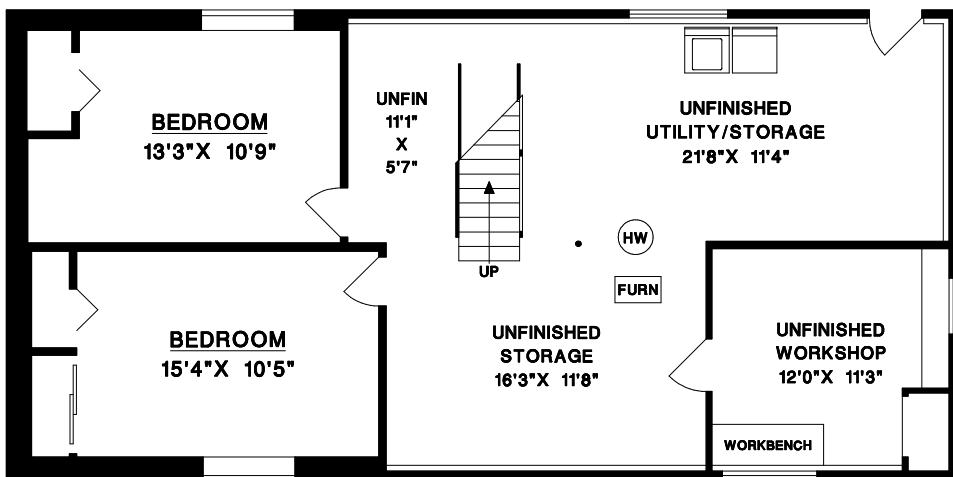
1501 JOHNSON ROAD  
GIBSONS, BC



MAIN LEVEL

MAIN LEVEL	1 133	SQFT
LOWER LEVEL (FINISHED)	437	SQFT
<b>TOTAL</b>	<b>1570</b>	<b>SQFT</b>
LOWER LEVEL (UNFINISHED)	716	SQFT
<b>TOTAL</b>	<b>2286</b>	<b>SQFT</b>

DECK 247 SQFT



LOWER LEVEL



1' 6'  
SCALE

© NO REPRODUCTION OF THIS PLAN IN ANY FORM IS ALLOWED UNLESS PERMISSION IS GIVEN BY:

**MEASURE MASTERS**  
RICHMOND / DELTA  
(604) 948-1888

1501JOHN S117 DEC 7/19