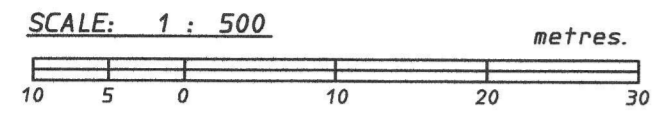


**POSTING PLAN OF LOT 1 BLOCK 1  
DL 686 GROUP 1 NWD PLAN 9731**

**PLAN EPP52193**

PURSUANT TO SECTION 68, LAND TITLE ACT.



BCGS 92G . 043

The intended plot size of this plan is 560mm in width by 432mm in height; C size when plotted at a scale of 1:500.

Integrated Survey Area No. 52  
Town of Gibsons, NAD83 (CSRS).

Grid bearings, the UTM coordinates and the estimated horizontal positional accuracy achieved are derived from the MASCOT published coordinates and standard deviations for geodetic control monuments 94H1213 and 94H1219.

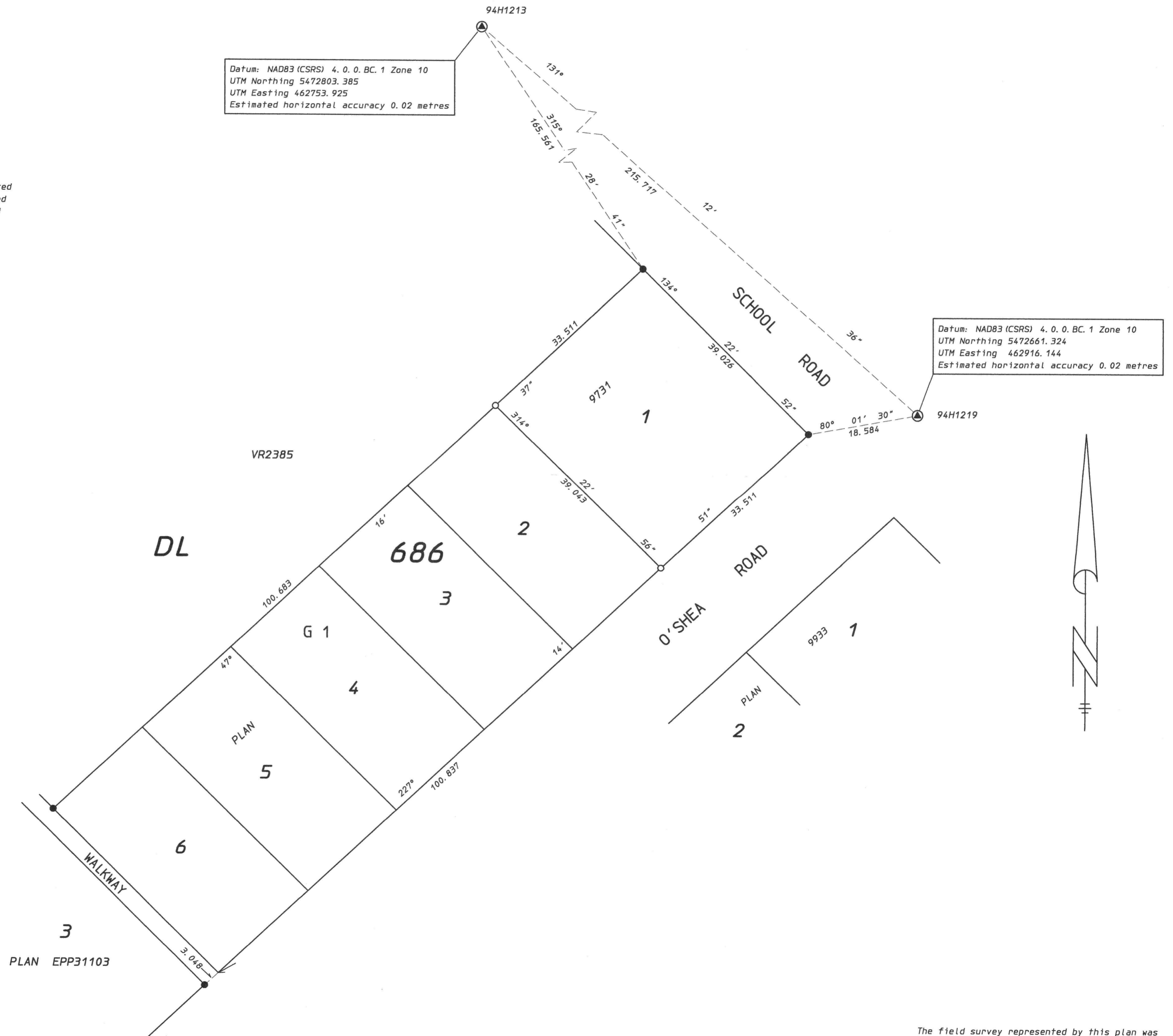
This plan shows horizontal ground-level distances unless otherwise specified. To compute grid distances, multiply ground-level distances by the average combined factor of 0.9996004 which has been derived from geodetic control monuments 94H1213 and 94H1219.

Coordinates shown are for mapping purposes only and may not be used to define property corners or property boundaries.

**LEGEND**

All distances are in metres.

- ▲ control monument found.
- standard iron post found.
- standard iron post set.



Datum: NAD83 (CSRS) 4. 0. 0. BC. 1 Zone 10  
UTM Northing 5472803.385  
UTM Easting 462753.925  
Estimated horizontal accuracy 0.02 metres

Datum: NAD83 (CSRS) 4. 0. 0. BC. 1 Zone 10  
UTM Northing 5472661.324  
UTM Easting 462916.144  
Estimated horizontal accuracy 0.02 metres

Penonzek Land Surveying Ltd.  
Larry W Penonzek  
B. C. Land Surveyor  
Box 505 Gibsons, B. C.  
VON 1V0 604-886-2531

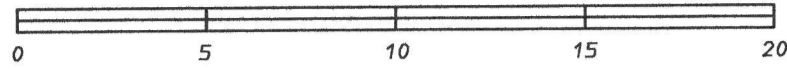
The field survey represented by this plan was completed on the 2nd day of June, 2015.  
Lawrence W Penonzek, BCLS; 614.

This plan lies within the Sunshine Coast Regional District.

TOPOGRAPHIC PLAN OF LOT 1,  
BLOCK 1, DL 686, PLAN 9731.

SCALE 1:200

METRES



SCHOOL ROAD

Elevations are based on the Town of Gibsons Datum.

