



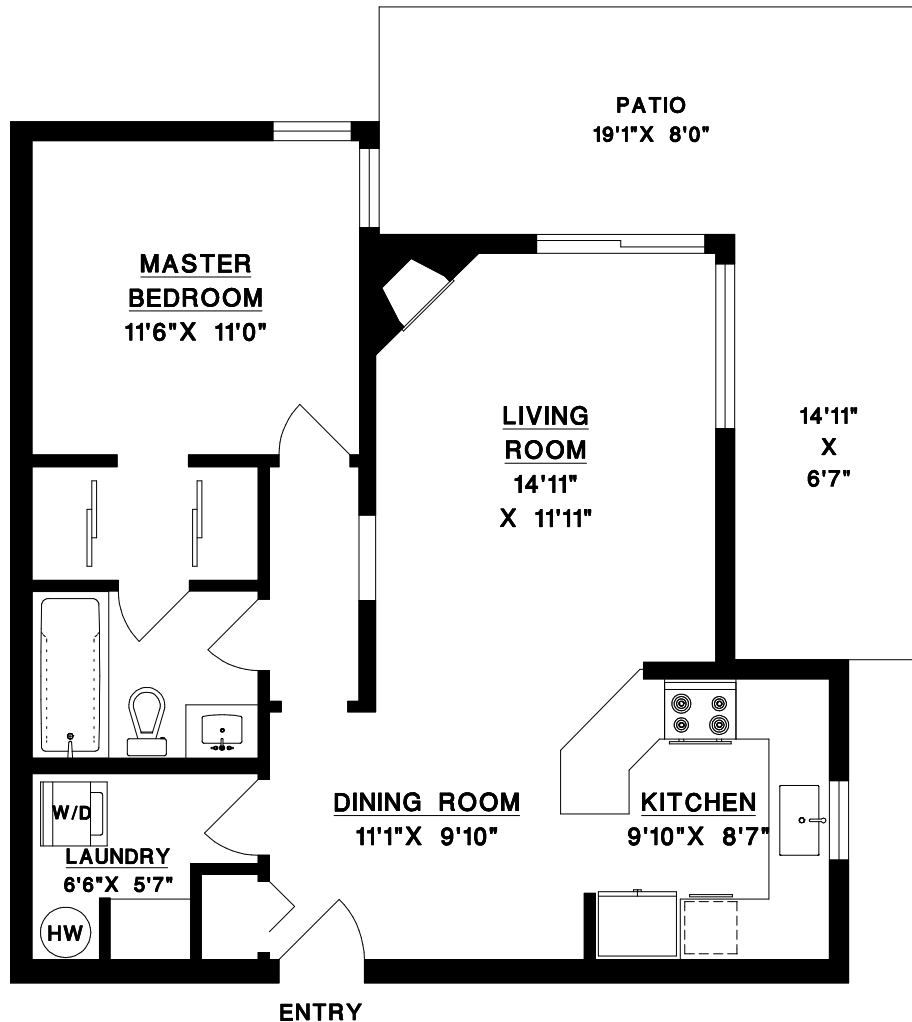
RE/MAX  
CITY REALTY

**TONY BROWTON**  
PERSONAL REAL ESTATE CORPORATION

604-418-2695

tbrowton@trueblurealty.ca

#18 - 689 PARK ROAD  
GIBSONS, BC



UNIT AREA 724 SQFT

PATIO 252 SQFT

NOTE: AREA MEASUREMENT IS TO CENTRE OF ALL WALLS



NO REPRODUCTION OF THIS PLAN IN ANY FORM IS ALLOWED UNLESS PERMISSION IS GIVEN BY:



**MEASURE MASTERS**  
RICHMOND/DELTA  
(604) 948-1888

689#18

S81

FEB 8 / 20



SCALE