



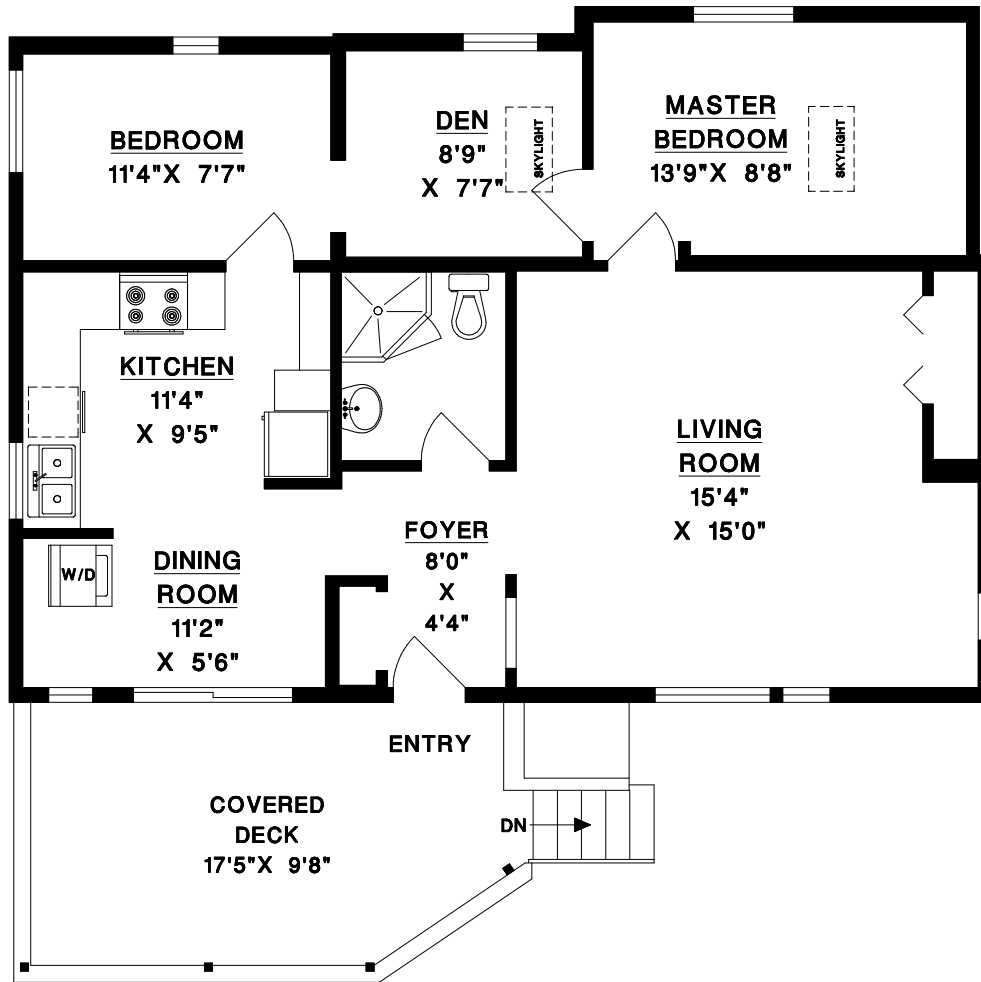
RE/MAX
CITY REALTY

TONY BROWTON
PERSONAL REAL ESTATE CORPORATION

604-418-2695

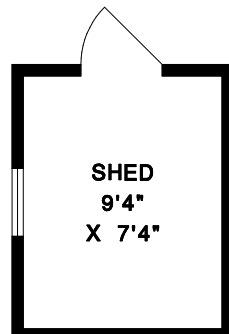
tbrowton@truebluerealty.ca

672 GOWER POINT ROAD
GIBSONS, BC



MAIN AREA 905 SQFT

COVERED DECK 165 SQFT
SHED 83 SQFT



NO REPRODUCTION OF THIS PLAN IN ANY FORM IS ALLOWED UNLESS PERMISSION IS GIVEN BY:
MEASURE MASTERS
RICHMOND / DELTA
(604) 948-1888
672GOWER S85 OCT 6/18

