

RE/MAX
CITY REALTY

TONY BROWTON

PERSONAL REAL ESTATE CORPORATION

604-418-2695

tbrowton@truebluerealty.ca



WEST COAST REALTY

GRANT MARSHALL

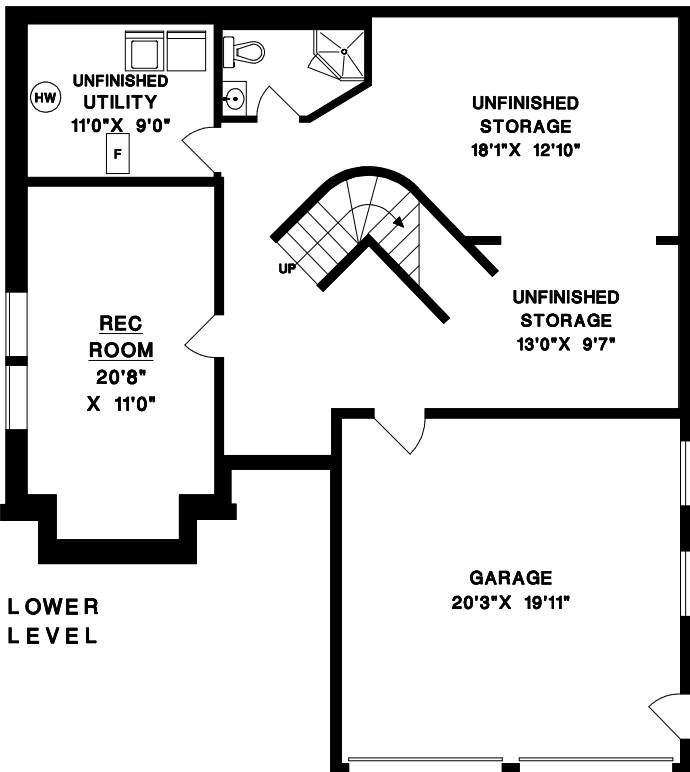
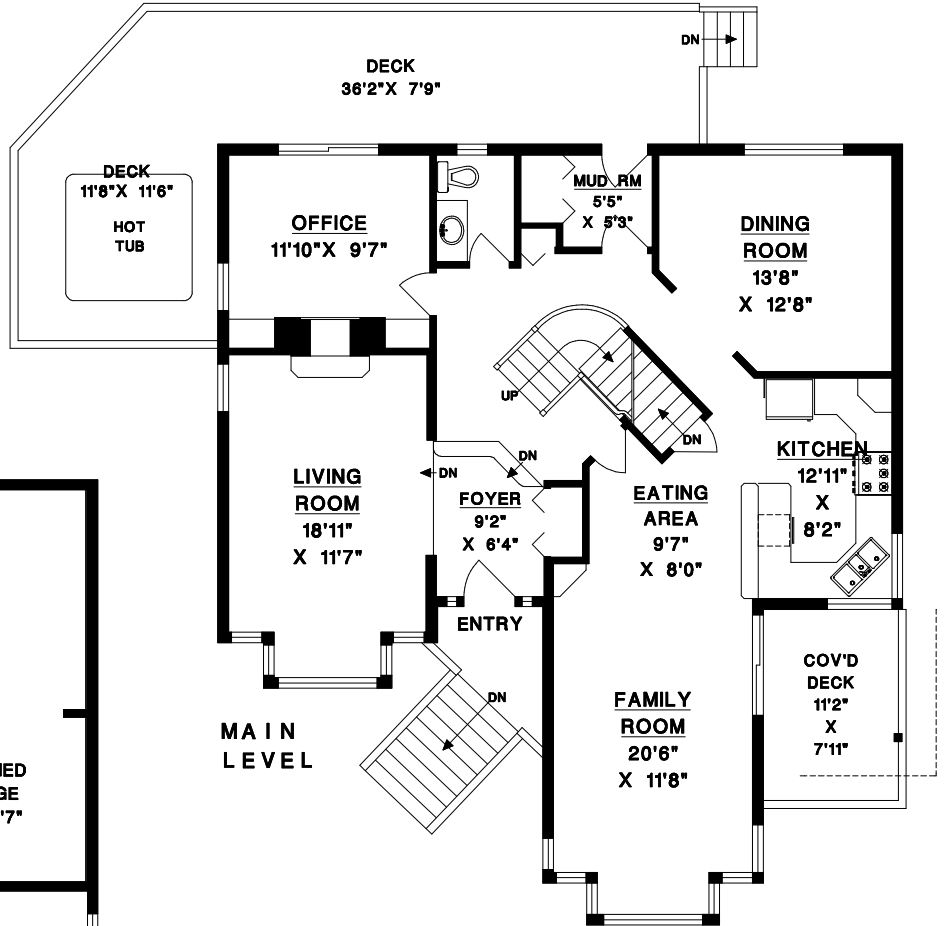
604-790-0788

Grant@MarshallSells.com

936 GOWER POINT ROAD
GIBSONS, BC

MAIN LEVEL	1364	SQFT
UPPER LEVEL	966	SQFT
LOWER LEVEL (FINISHED)	339	SQFT
TOTAL	2669	SQFT
LOWER LEVEL (UNFIN)	749	SQFT
TOTAL	3418	SQFT

GARAGE	442	SQFT
DECK	417	SQFT
COVERED DECK	89	SQFT
COVERED BALCONY	61	SQFT



NO REPRODUCTION OF THIS PLAN IN ANY FORM IS ALLOWED UNLESS PERMISSION IS GIVEN BY:

MEASURE MASTERS
RICHMOND/DELTA
(604) 948-1888
936 GOWER S135 FEB 25/18

1" = 6'
SCALE