



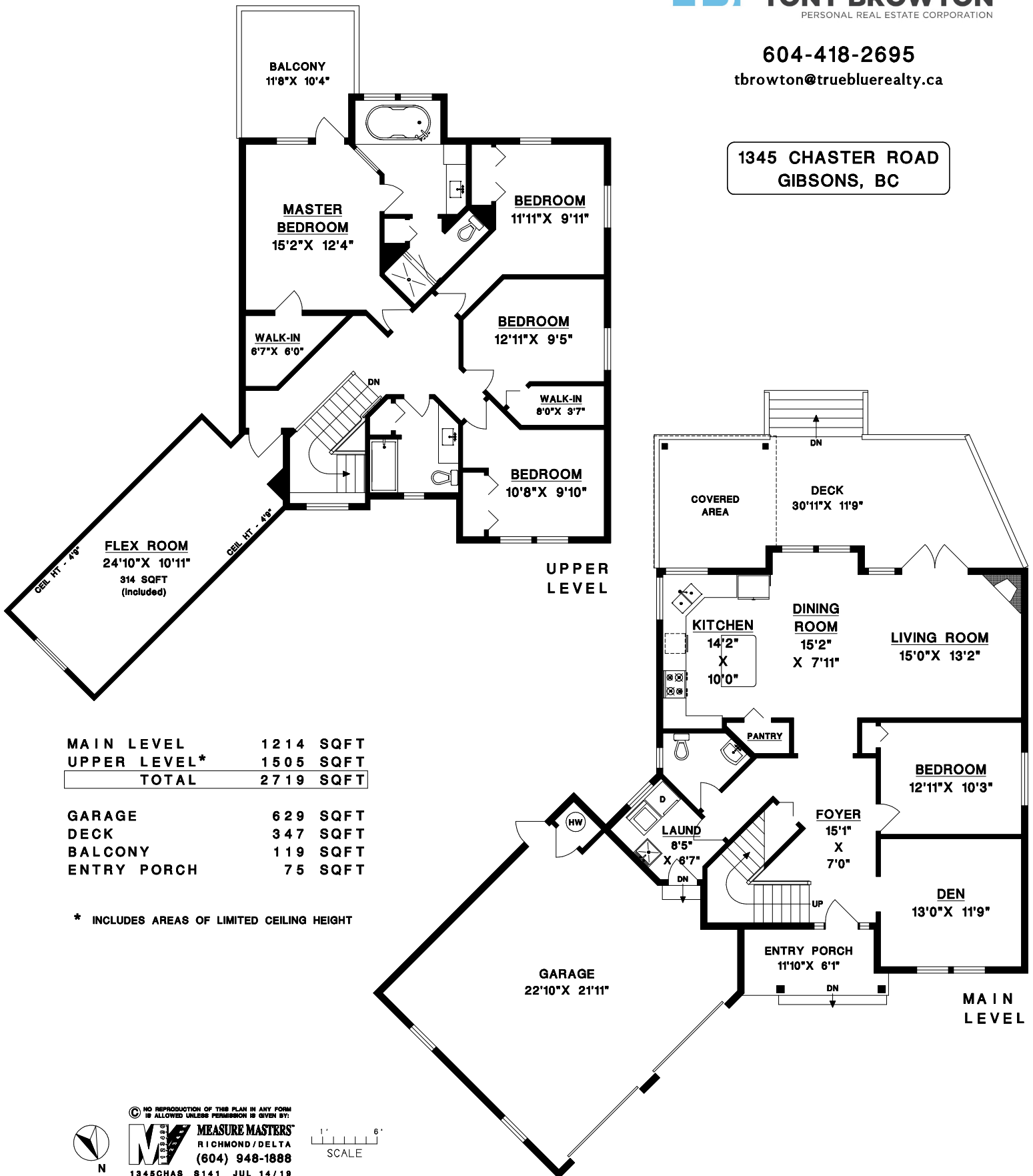
RE/MAX
CITY REALTY

TONY BROWTON
PERSONAL REAL ESTATE CORPORATION

604-418-2695

tbrowton@truebluerealty.ca

1345 CHASTER ROAD
GIBSONS, BC



MAIN LEVEL	1214	SQFT
UPPER LEVEL*	1505	SQFT
TOTAL	2719	SQFT

GARAGE	629	SQFT
DECK	347	SQFT
BALCONY	119	SQFT
ENTRY PORCH	75	SQFT

* INCLUDES AREAS OF LIMITED CEILING HEIGHT



© NO REPRODUCTION OF THIS PLAN IN ANY FORM IS ALLOWED UNLESS PERMISSION IS GIVEN BY:
MEASURE MASTERS
 RICHMOND/DELTA
 (604) 948-1888
 1345CHAS 8141 JUL 14/19

