

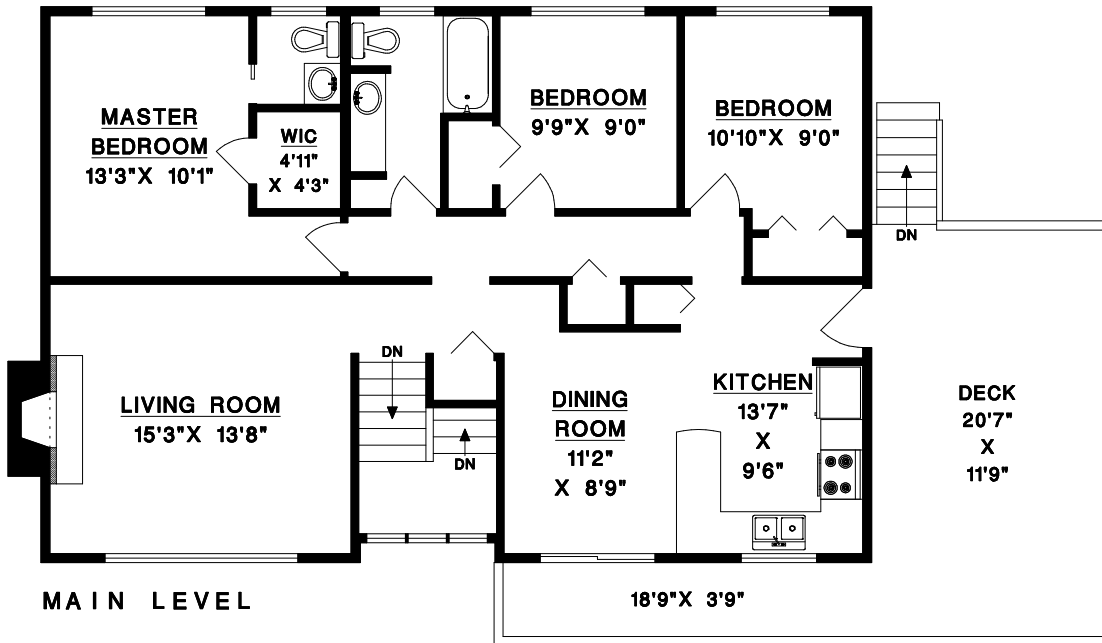


TONY BROWTON
TrueBlueRealty.ca

604-418-2695

tbrowton@trueblurealty.ca

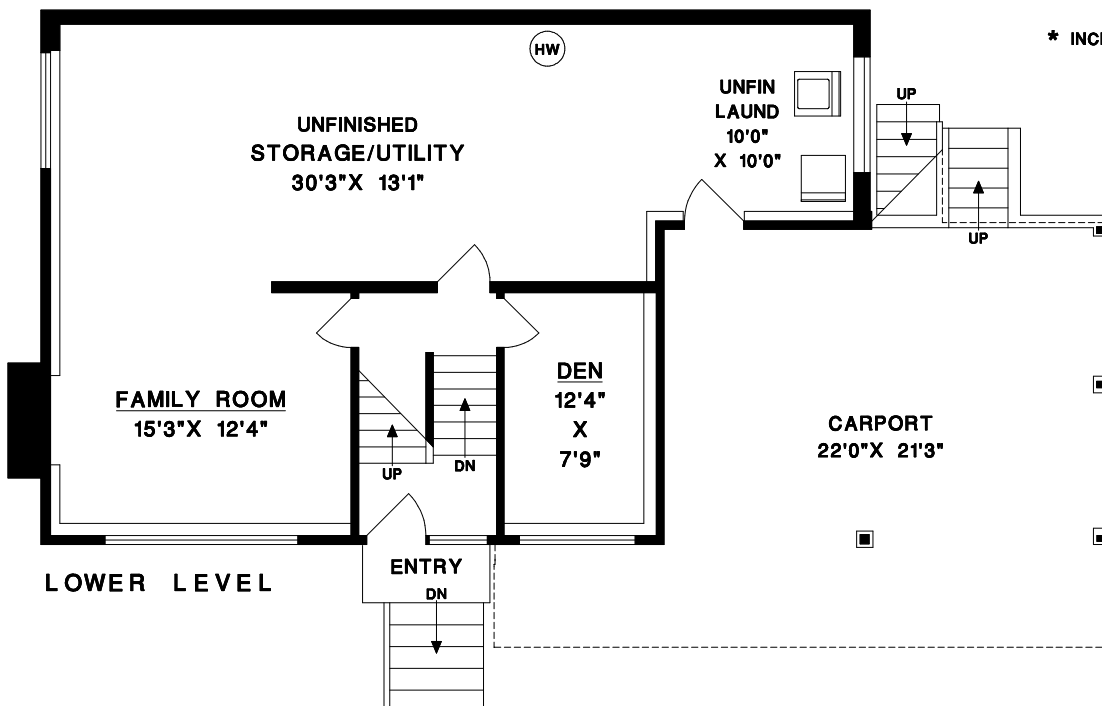
629 BEACH AVENUE
GIBSONS, BC



MAIN LEVEL	1 183	SQFT
LOWER LEVEL (FINISHED)	4 22	SQFT
TOTAL	1 605	SQFT
LOWER LEVEL* (UNFIN)	5 53	SQFT
TOTAL	2 158	SQFT

CARPORT	4 67	SQFT
DECK	3 13	SQFT

* INCLUDES UNFIN STOR/UTIL/LAUNDRY (553 SQFT)



© NO REPRODUCTION OF THIS PLAN IN ANY FORM IS ALLOWED UNLESS PERMISSION IS GIVEN BY:
MEASURE MASTERS
RICHMOND/DELTA
(604) 948-1888
629 BEACH S125 OCT 23/16