



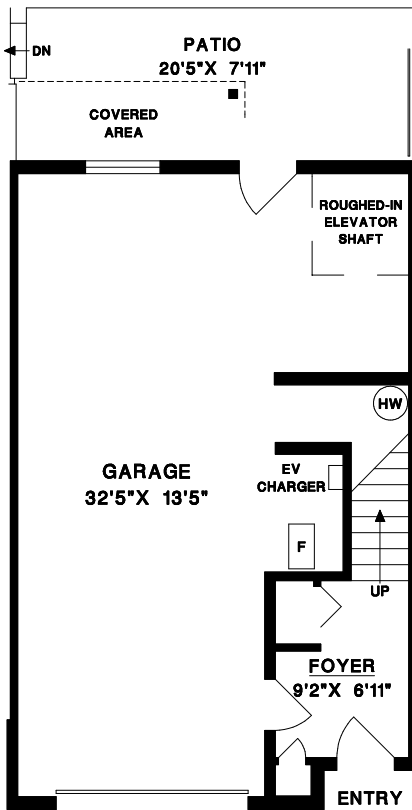
RE/MAX  
CITY REALTY

**TONY BROWTON**  
PERSONAL REAL ESTATE CORPORATION

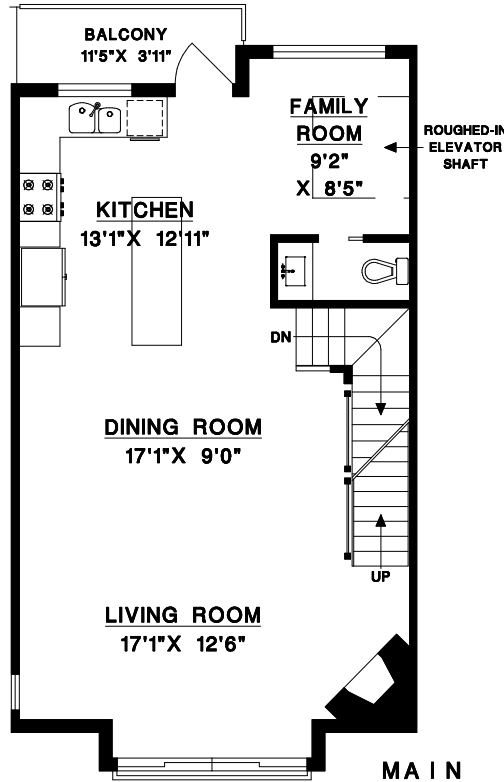
604-418-2695

trownton@trueblurealty.ca

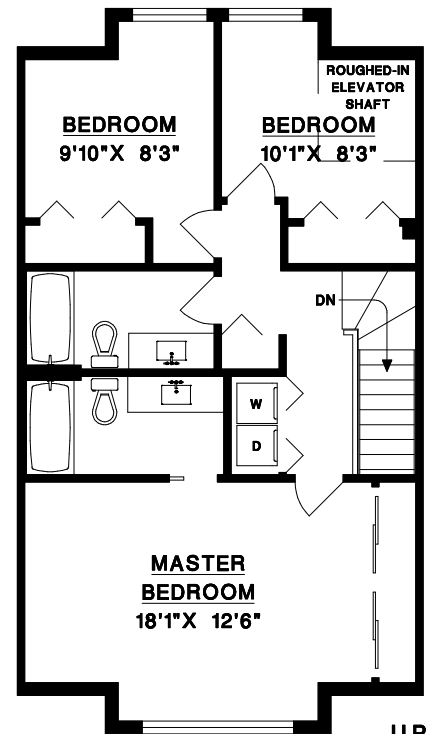
#2 - 665 CRUCIL ROAD  
GIBSONS, BC



LOWER LEVEL



MAIN LEVEL



UPPER LEVEL

MAIN LEVEL	756	SQFT
UPPER LEVEL	761	SQFT
LOWER LEVEL	121	SQFT
<b>TOTAL</b>	<b>1638</b>	<b>SQFT</b>

GARAGE	583	SQFT
BALCONY	45	SQFT
PATIO	160	SQFT

NOTE: AREA MEASUREMENT IS TO OUTSIDE OF EXTERIOR WALLS & CENTRE OF DEMISING WALLS

© NO REPRODUCTION OF THIS PLAN IN ANY FORM IS ALLOWED UNLESS PERMISSION IS GIVEN BY:

**MEASURE MASTERS**  
RICHMOND / DELTA  
(604) 948-1888

665#2    8120    OCT 11/19