

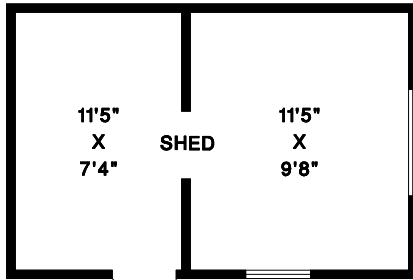


RE/MAX
CITY REALTY

TONY BROWTON
PERSONAL REAL ESTATE CORPORATION

604-418-2695

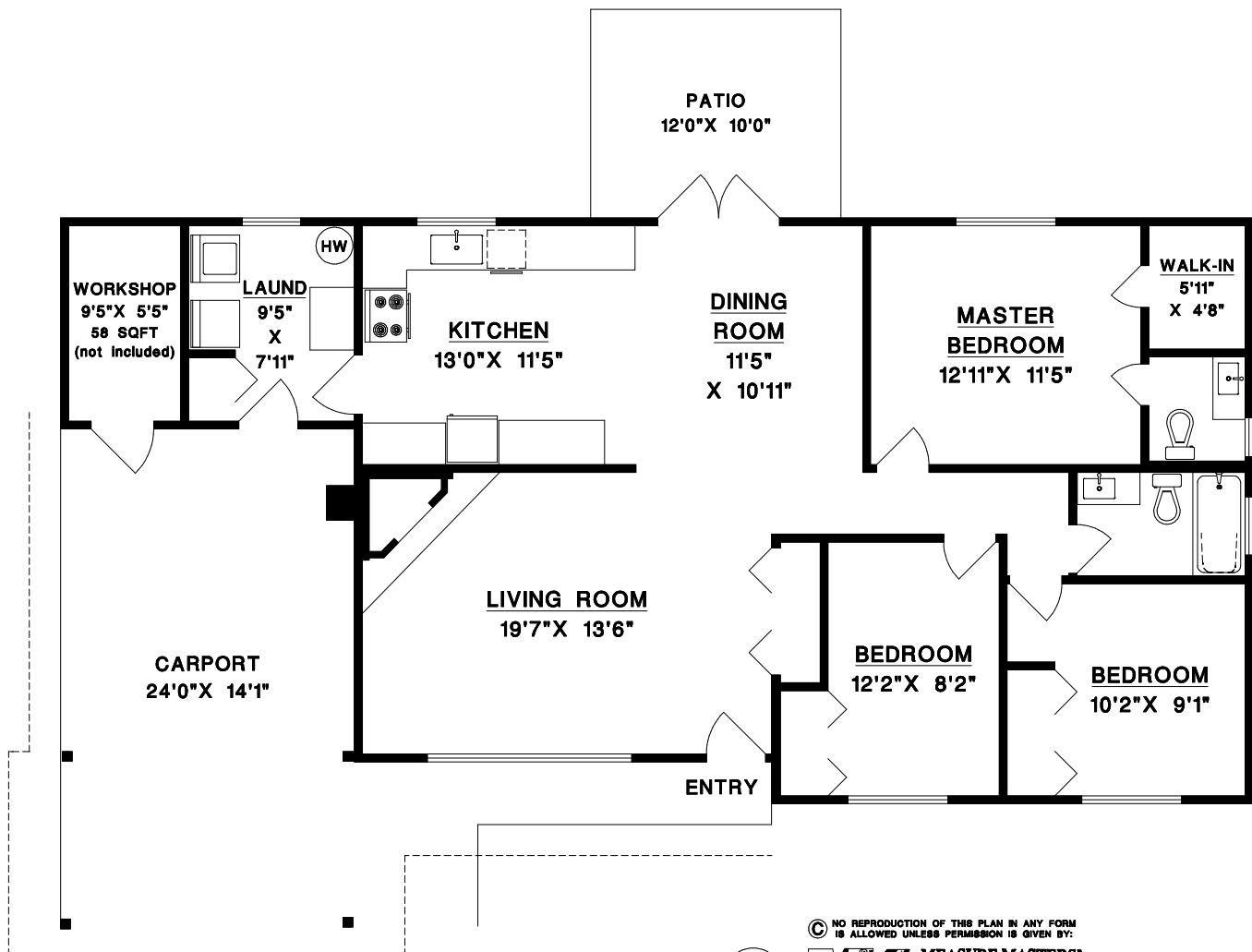
tbrowton@truebluerealty.ca



NOTE: SHED SHOWN CLOSER TO HOUSE THAN ACTUAL POSITION

1103 MALAVIEW ROAD
GIBSONS, BC

MAIN AREA	1 2 5 4	SQFT
WORKSHOP	5 8	SQFT
CARPORT	3 3 8	SQFT
SHED	2 2 1	SQFT
PATIO	1 2 0	SQFT



© NO REPRODUCTION OF THIS PLAN IN ANY FORM IS ALLOWED UNLESS PERMISSION IS GIVEN BY:



MEASURE MASTERS
RICHMOND / DELTA
(604) 948-1888
1103MALA S102 JUL 8/18

