



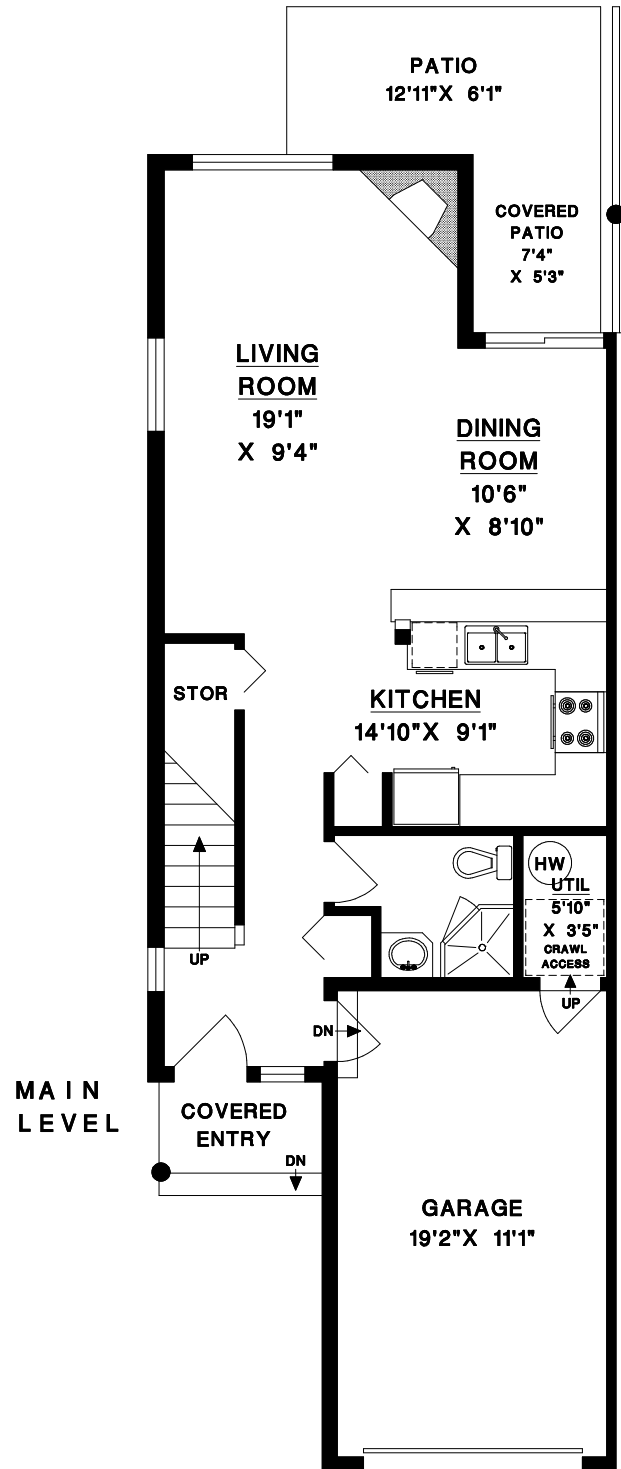
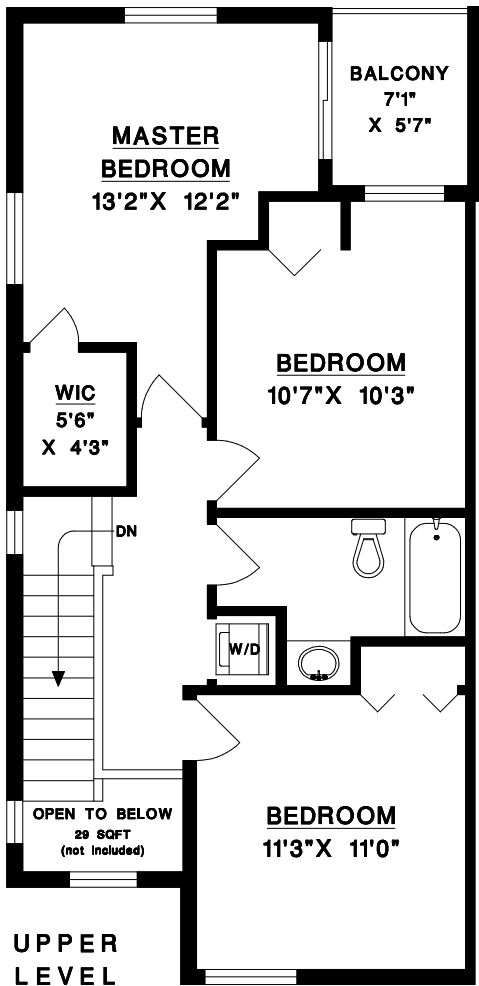
RE/MAX
CITY REALTY

TONY BROWTON
PERSONAL REAL ESTATE CORPORATION

#50 - 735 PARK ROAD
GIBSONS, BC

604-418-2695

tbrowton@truebluerealty.ca



MAIN LEVEL *	648	SQFT
UPPER LEVEL	672	SQFT
TOTAL	1320	SQFT

GARAGE	237	SQFT
PATIO AREAS	117	SQFT
BALCONY	40	SQFT

* INCLUDES UTILITY ROOM OFF GARAGE (24 SQFT)

NOTE: AREA MEASUREMENT IS TO OUTSIDE OF EXTERIOR WALLS & CENTRE OF DEMISING WALLS



© NO REPRODUCTION OF THIS PLAN IN ANY FORM IS ALLOWED UNLESS PERMISSION IS GIVEN BY:

MEASURE MASTERS
RICHMOND/DELTA
(604) 948-1888
735#50 S95 OCT 17/21

