



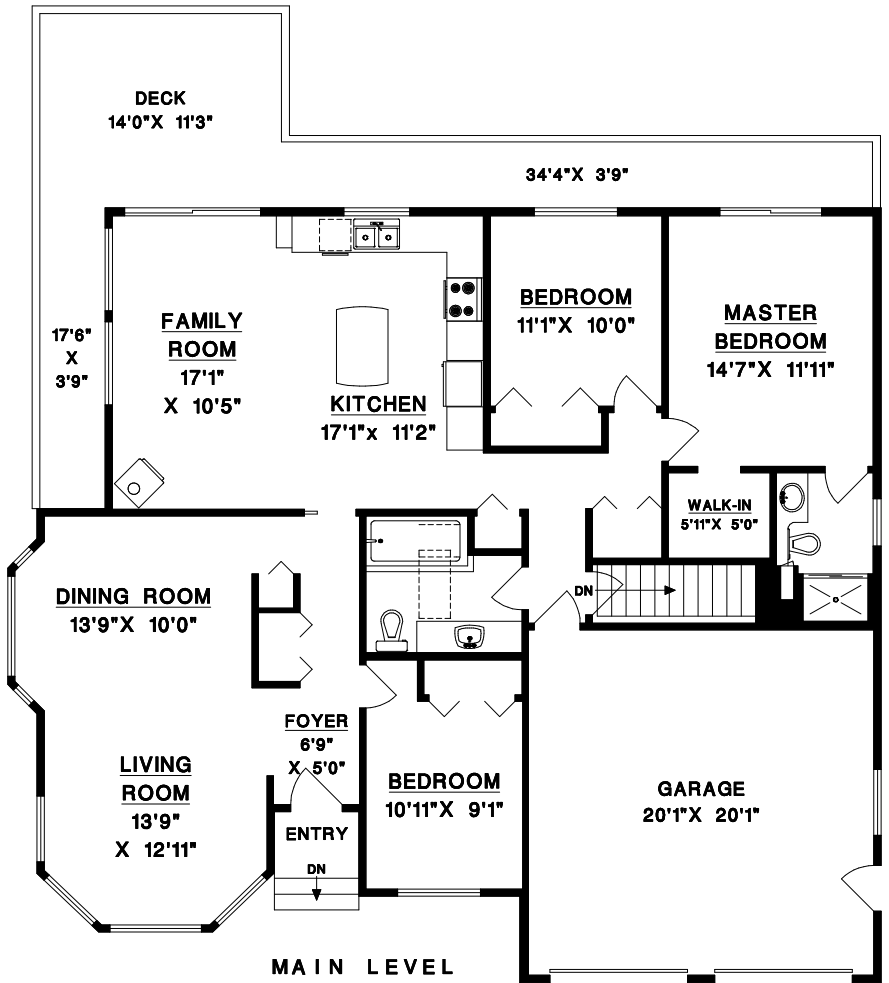
**TONY BROWTON**  
TrueBlueRealty.ca

604-418-2695

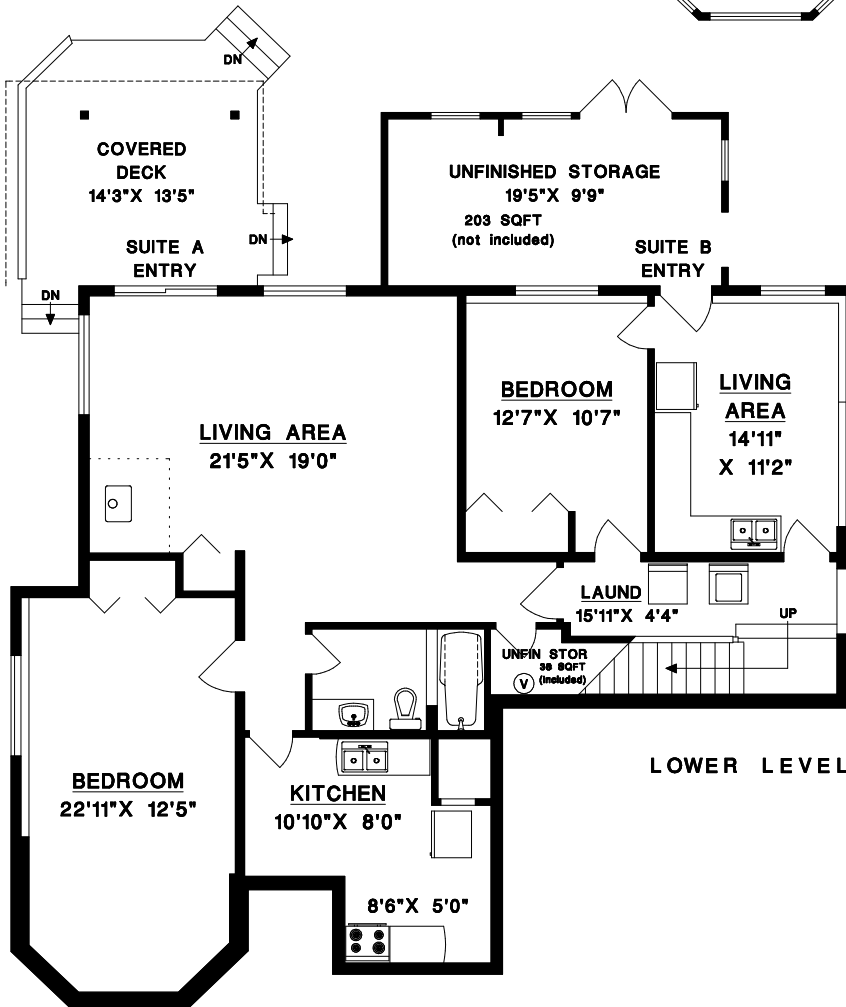
tbrowton@trueblurealty.ca



473 OCEANVIEW DRIVE  
GIBSONS, BC



MAIN LEVEL



LOWER LEVEL

MAIN LEVEL	1585 SQFT
LOWER LEVEL*	1571 SQFT
<b>TOTAL</b>	<b>3156 SQFT</b>

GARAGE	424 SQFT
STORAGE (UNFINISHED)	203 SQFT
DECK AREAS	357 SQFT
COVERED DECK	195 SQFT

\* INCLUDES UNFIN UNDER-STAIR STOR (38 SQFT)

LOWER LEVEL INCLUDES SUITE AREAS:  
SUITE A - 1061 SQFT; SUITE B - 361 SQFT

NO REPRODUCTION OF THIS PLAN IN ANY FORM IS ALLOWED UNLESS PERMISSION IS GIVEN BY:

**MEASURE MASTERS**  
RICHMOND/DELTA  
(604) 948-1888  
473OCEAN 8134 MAR 14/17

