



RE/MAX  
CITY REALTY

**TONY BROWTON**  
PERSONAL REAL ESTATE CORPORATION

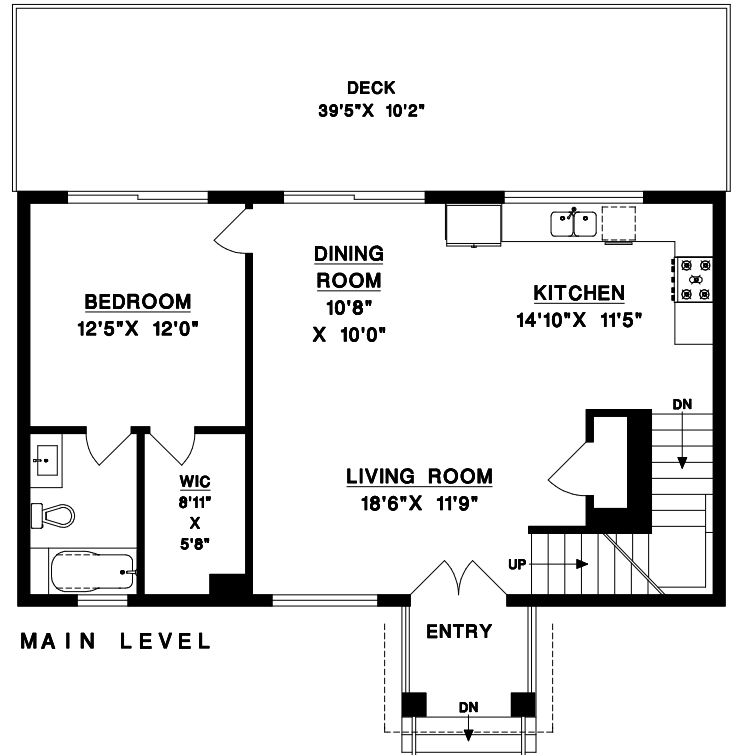
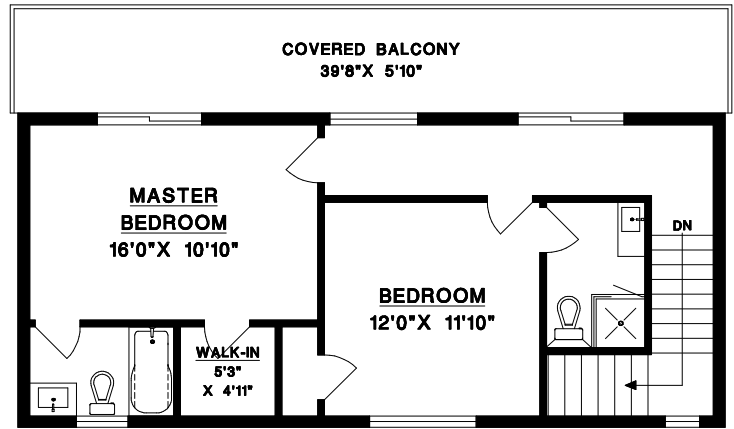
604-418-2695

tbrowton@trueblurealty.ca

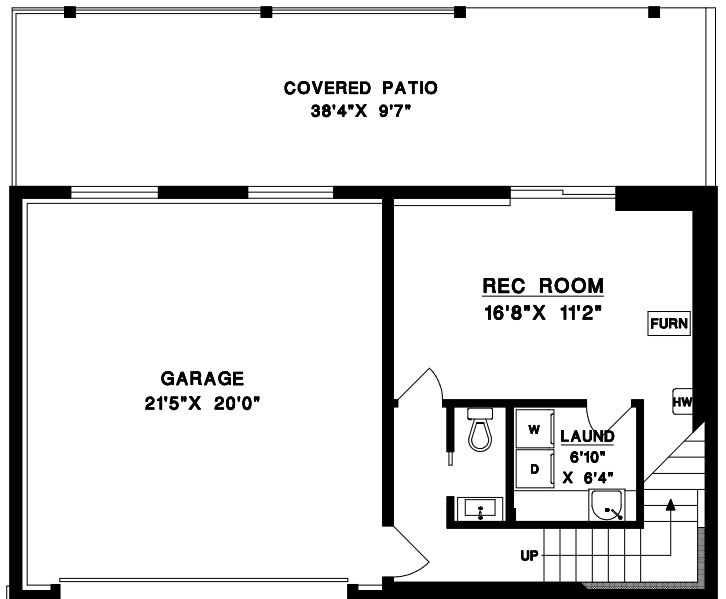
531 WOODLAND AVENUE  
GIBSONS, BC

MAIN LEVEL	905	SQFT
UPPER LEVEL	686	SQFT
LOWER LEVEL	428	SQFT
<b>TOTAL</b>	<b>2019</b>	<b>SQFT</b>

GARAGE	481	SQFT
COVERED BALCONY	230	SQFT
DECK	401	SQFT
COVERED PATIO	372	SQFT



**LOWER LEVEL**



© NO REPRODUCTION OF THIS PLAN IN ANY FORM IS ALLOWED UNLESS PERMISSION IS GIVEN BY:

**MEASURE MASTERS**  
RICHMOND / DELTA  
(604) 948-1888  
531 WOODL 8128 JUN 6/19

