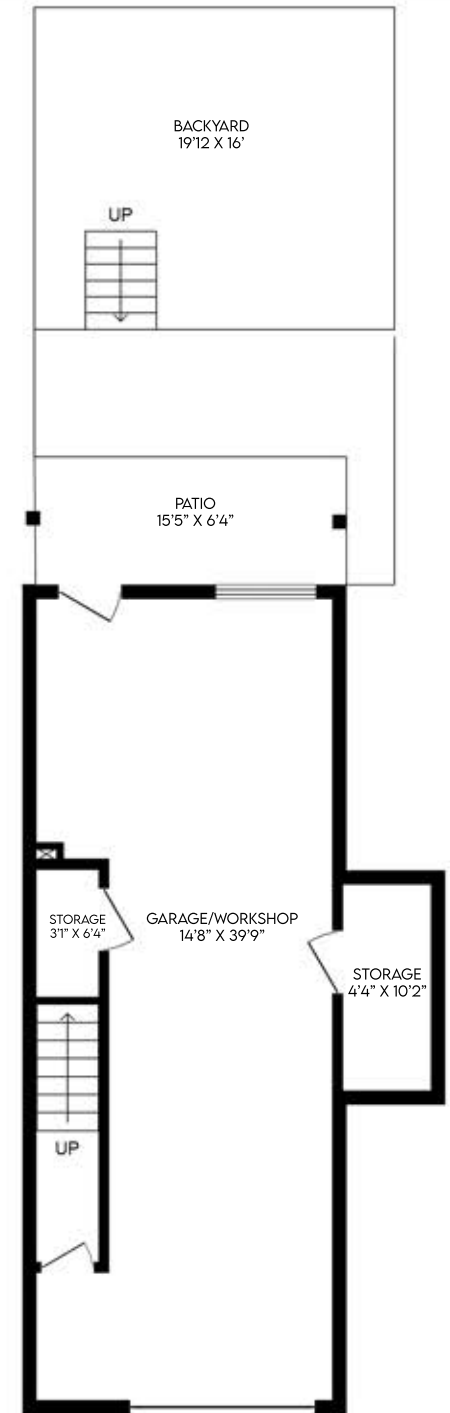
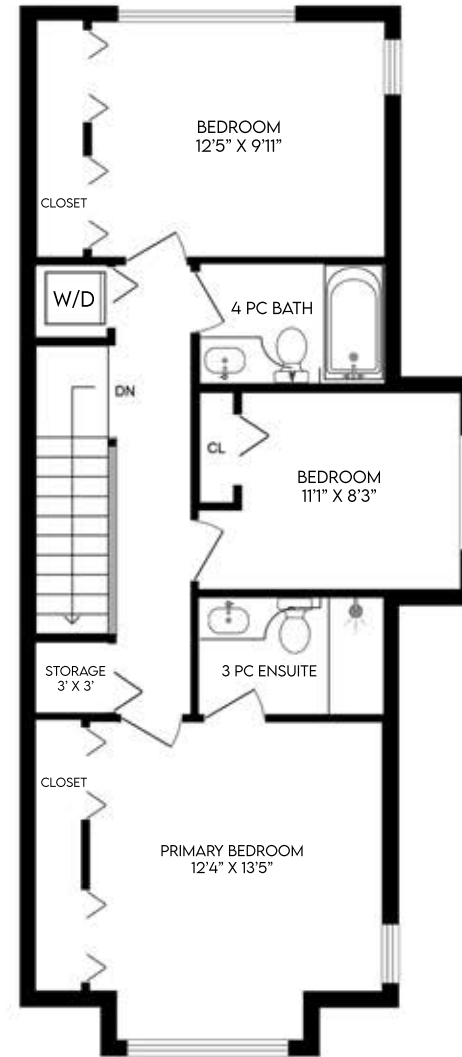
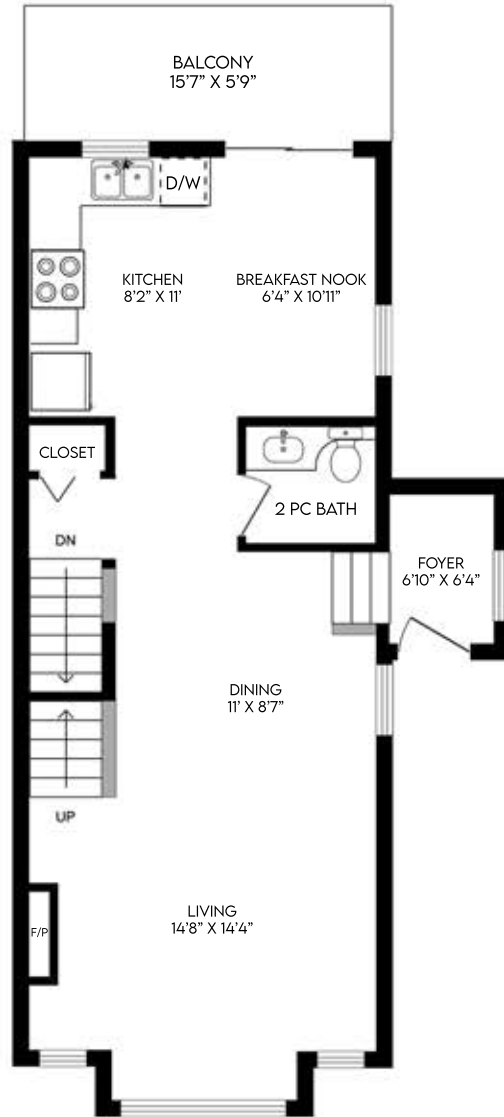


3 BEDROOMS | 3 1/2 BATHROOMS

Main Floor	686sf
Upper Floor	732sf
Lower Floor	88sf

Total Interior 1,507sf

Garage	597sf
Balcony	93sf
Patio	98sf



All room dimensions and floor areas must be considered approximate and are subject to independent verification. Totals shown include wall thickness and reference measurements made to the exterior walls.

