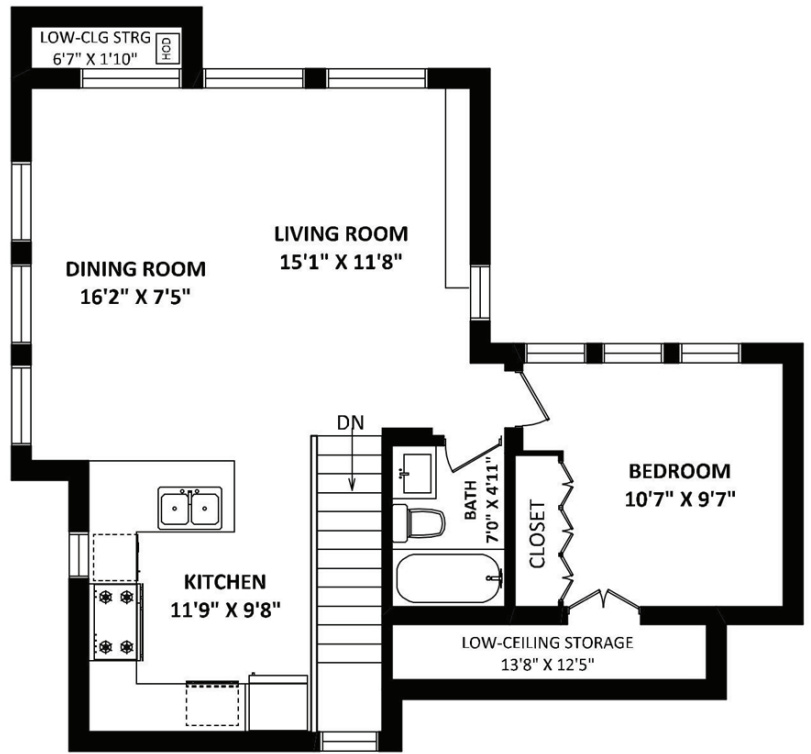


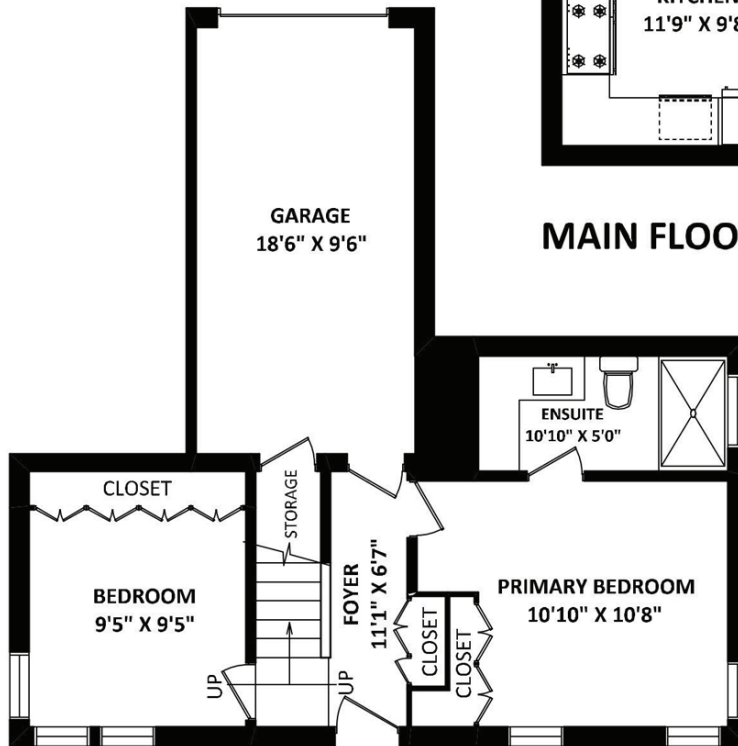
TOTAL FINISHED AREA: 1183 SQ.FT.

OTHER AREA(S)

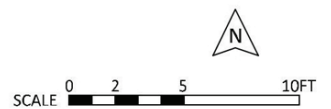
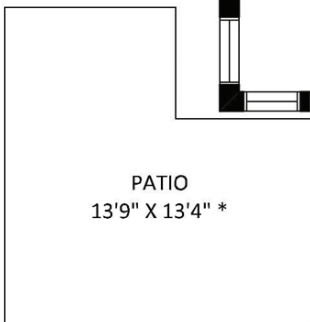
GARAGE:	229 SQ.FT.
LOW-CEILING STORAGE (BED):	46 SQ.FT.*
LOW-CEILING STORAGE (DINING):	22 SQ.FT.*
PATIO:	157 SQ.FT.*



MAIN FLOOR: 729 SQ.FT.



LOWER FLOOR: 454 SQ.FT.



DISCLAIMERS:
 1. MEASUREMENTS ARE FOR PROMOTIONAL USE ONLY & ARE NOT INTENDED FOR CONSTRUCTION USE. ROOM DIMENSIONS ARE APPROXIMATE. MEASUREMENTS & CALCULATIONS FOR FINISHED AREAS ARE E&O INSURED.
 2. FINISHED AREAS ARE ENCLOSED AREAS IN A HOUSE THAT ARE SUITABLE FOR YEAR-ROUND USE, EMBODYING WALLS, FLOORS, AND CEILINGS THAT ARE SIMILAR TO THE REST OF THE HOUSE. (ANSI Z765-2013)
 3. FOR ATTACHED SINGLE-FAMILY HOUSES, THE FINISHED SQUARE FOOTAGE OF EACH LEVEL IS CALCULATED TO THE EXTERIOR FINISHED SURFACE OF THE OUTSIDE WALL OR FROM THE CENTERLINES BETWEEN HOUSES. (ANSI Z765-2013)
 4. THIS FLOOR PLAN MAY ONLY BE REPRODUCED WITH PERMISSION OF THE REALTOR(S) ON THIS FLOOR PLAN.
 * ANY MEASUREMENTS WITH AN ASTERISK (*) ARE APPROXIMATE AND FOR ILLUSTRATION PURPOSES ONLY AND ARE NOT E&O INSURED.