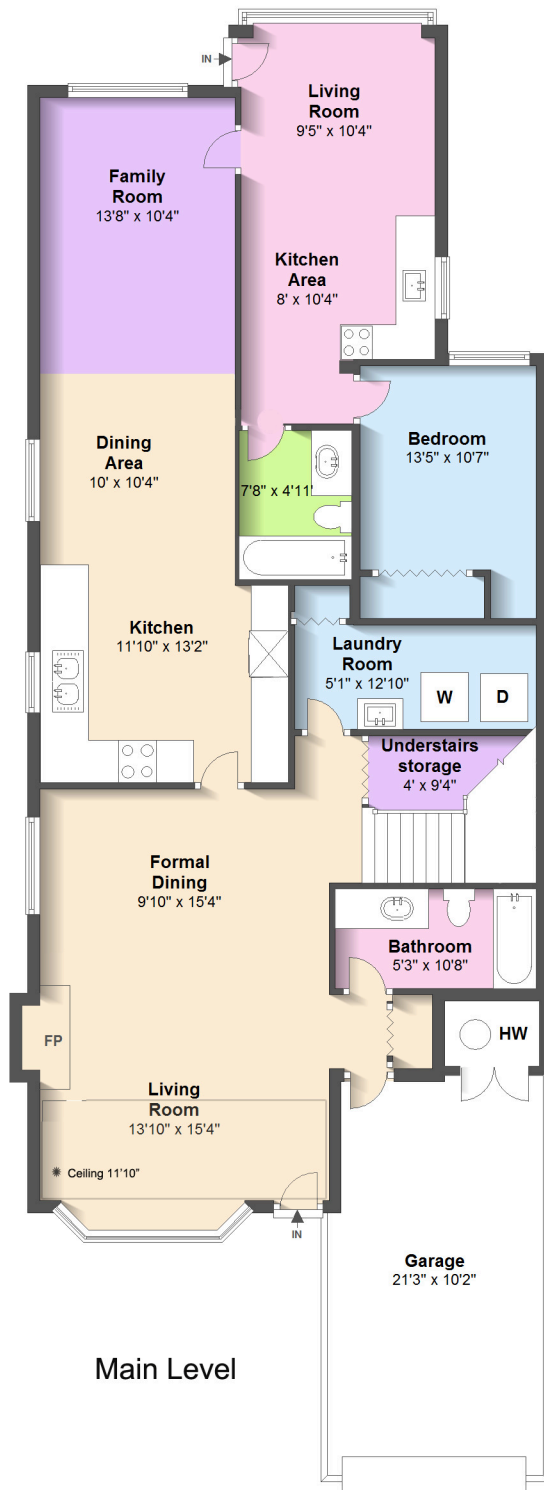


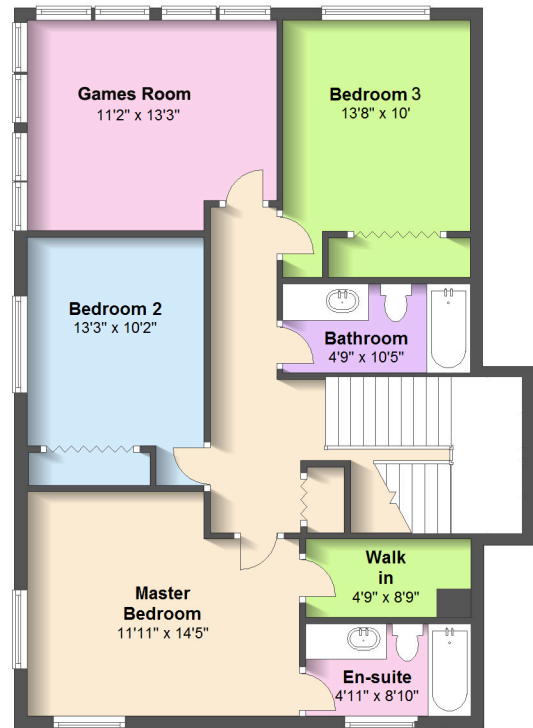
650 Gauthier Avenue

Coquitlam, BC.

Large backyard with separate entrance to self contained unit.



Upper Level



Main Level approx 1351 sq ft

Upper Level approx 893 sq ft

Approx Total 2244 sq ft

Games room measurements included in total sq ft
(not included in original strata plans)

Main area Ceiling height 8'11"

Garage approx 216 sq ft

Maria Senajova

RE/MAX Crest Realty Westside

maria@vancouverurbanhomes.com

604.657.1110