

DONOHUE JEFF & JONNY

PERSONAL REAL ESTATE CORPORATION

JEFF@JEFFDONOHUE.COM 604-340-8588
 JONNY@JEFFDONOHUE.COM WWW.JEFFDONOHUE.COM

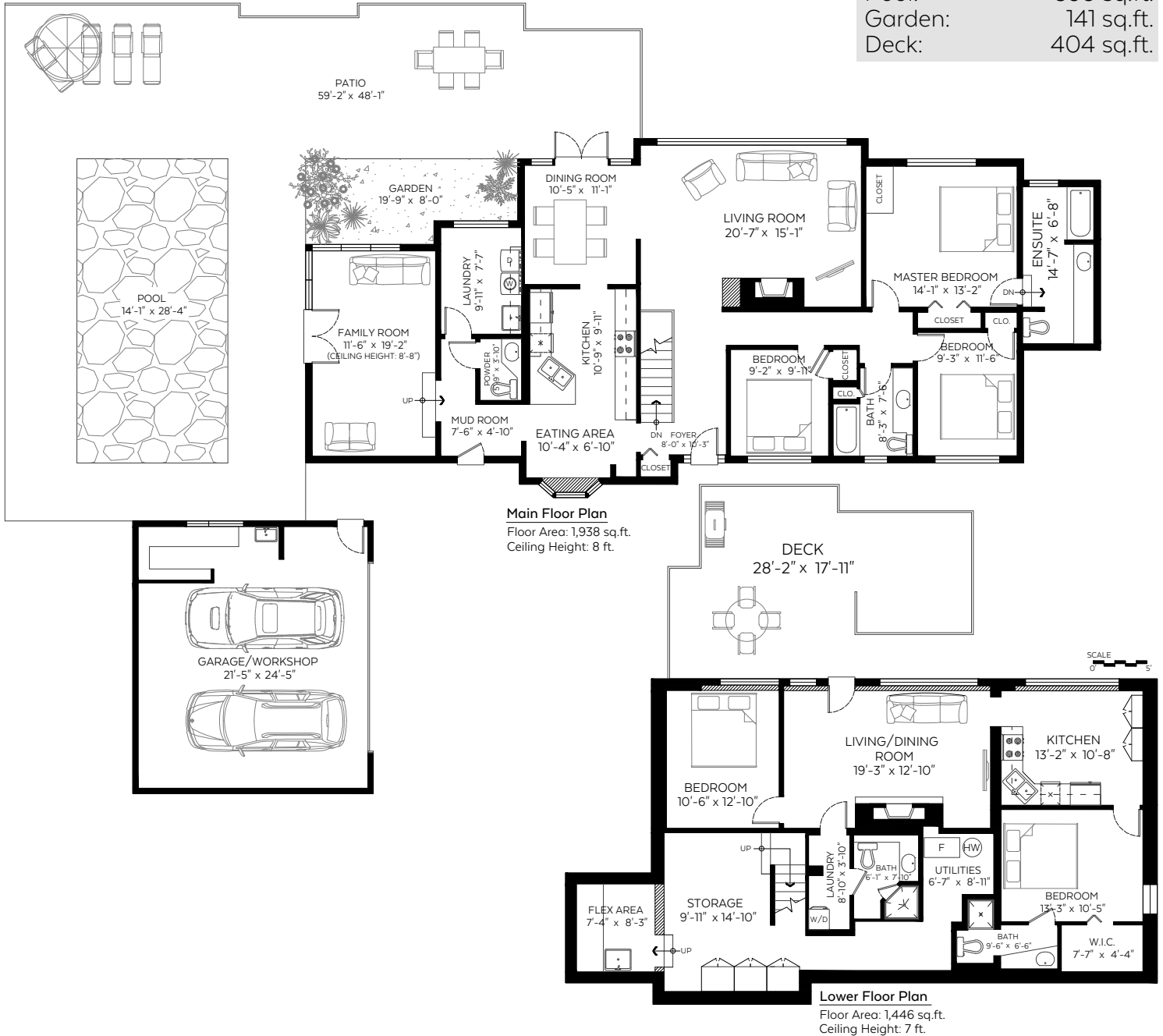
RE/MAX
 CREST REALTY

3221 Wayne Drive,
 North Vancouver, B.C.

Main Floor:	1,938 sq.ft.
Lower Floor:	1,446 sq.ft.
Total:	3,384 sq.ft.

Auxiliary Area

Garage:	568 sq.ft.
Patio:	1,354 sq.ft.
Pool:	398 sq.ft.
Garden:	141 sq.ft.
Deck:	404 sq.ft.



Valid Until: March 18th, 2023

The floor plan is not suitable for architectural/construction and is covered under E&O. © Excelsior Measuring Inc. 2022. All rights reserved for Excelsior Measuring Inc. Users shall not publish and distribute such material (in whole or in part) and/or incorporate it in other works in any form.



Valid Until: March 18th, 2023

Main Info.



5



4 1/2

Main Floor	1,938 sq.ft.
Lower Floor	1,446 sq.ft.
Total	3,384 sq.ft.

Main Floor

FOYER	8'-0"x10'-3"
EATING AREA	10'-4"x6'-10"
MUD ROOM	7'-6"x4'-10"
FAMILY ROOM	11'-6"x19'-2"
LAUNDRY	9'-11"x19'-2"
POWDER	5'-9"x3'-10"
EATING AREA	10'-4"x6'-10"
KITCHEN	10'-9"x9'-11"
DINING ROOM	10'-5"x11'-1"
LIVING ROOM	20'-7"x15'-1"
BEDROOM	9'-2"x9'-11"
BATH	8'-3"x7'-6"
BEDROOM	9'-3"x11'-6"
M.BEDROOM	14'-1"x13'-2"
ENSUITE	14'-7"x6'-8"

Lower Floor

FLEX AREA	7'-4"x8'-3"
STORAGE	9'-11"x14'-10"
BEDROOM	10'-6"x12'-10"
LAUNDRY	8'-10"x3'-10"
BATH	6'-1"x7'-10"
LIVING/DINING ROOM	19'-3"x12'-10"
BATH	6'-1"x7'-10"
UTILITIES	6'-7"x8'-11"
BATH	9'-6"x6'-6"
W.I.C	7'-7"x4'-4"
BEDROOM	13'-3"x10'-5"
KITCHEN	13'-2"x10'-8"

