

Jeff Donohoe

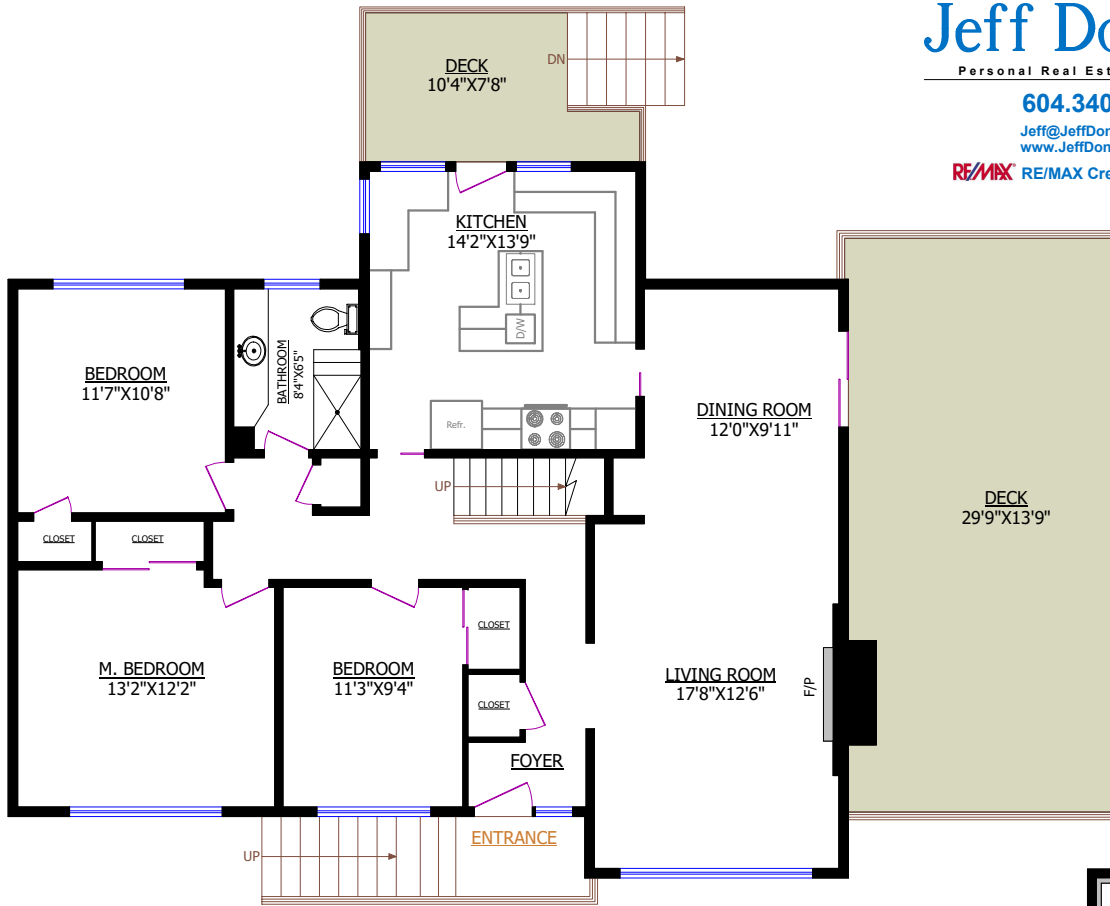
Personal Real Estate Corporation

604.340.8588

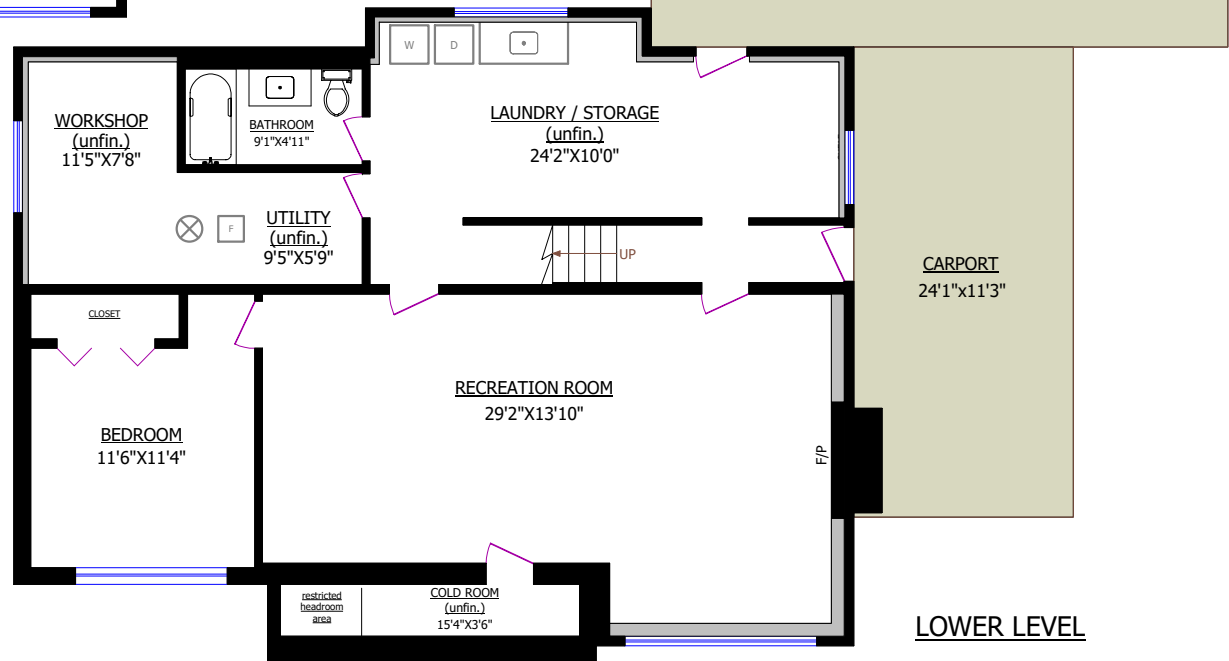
Jeff@JeffDonohoe.com
www.JeffDonohoe.com

RE/MAX RE/MAX Crest Realty

1324 E 16TH STREET
NORTH VANCOUVER



MAIN FLOOR

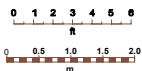


LOWER LEVEL

TOTALS*	
Main Floor (finished):	1,319 sq.ft.
Lower Level (finished):	839 sq.ft.
TOTAL FINISHED:	2,158 sq.ft.
Lower Level (unfinished)*:	469 sq.ft.
TOTAL UNFINISHED*:	469 sq.ft.
GRAND TOTAL*:	2,627 sq.ft.

* Exclude(s) restricted headroom areas

FOR PROMOTIONAL USE ONLY. NOT FOR ARCHITECTURAL OR CONSTRUCTION USE. E&OE



© Vancouver Realty Support Group Inc.
www.floorplansvancouver.com
+1-604-761-7919