

DONOHUE JEFF & JONNY

PERSONAL REAL ESTATE CORPORATION

JEFF@JEFFDONOHOE.COM 604-340-8588
 JONNY@JEFFDONOHOE.COM WWW.JEFFDONOHOE.COM

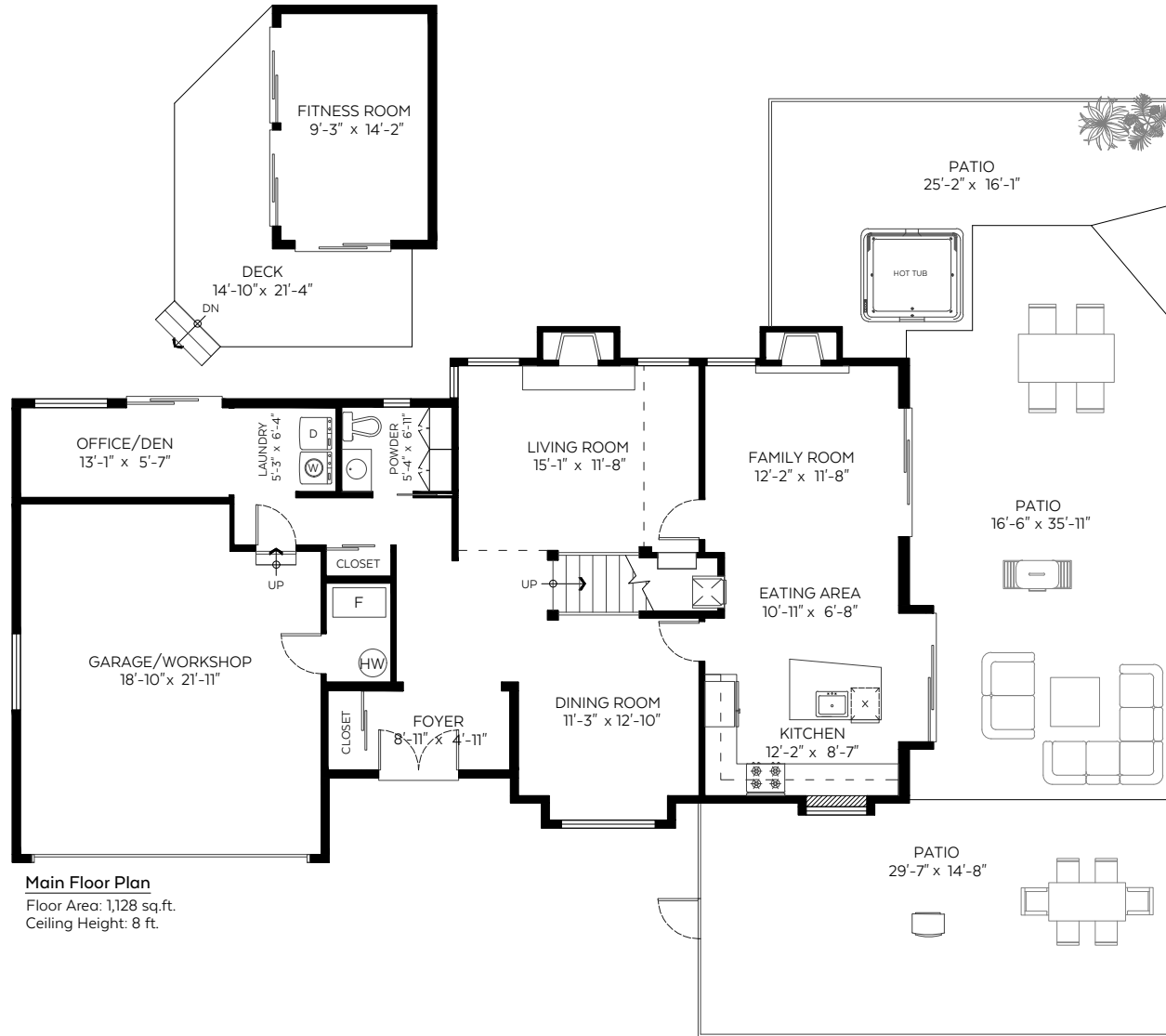
RE/MAX
 CREST REALTY

3995 Frames Place,
 North Vancouver, B.C.

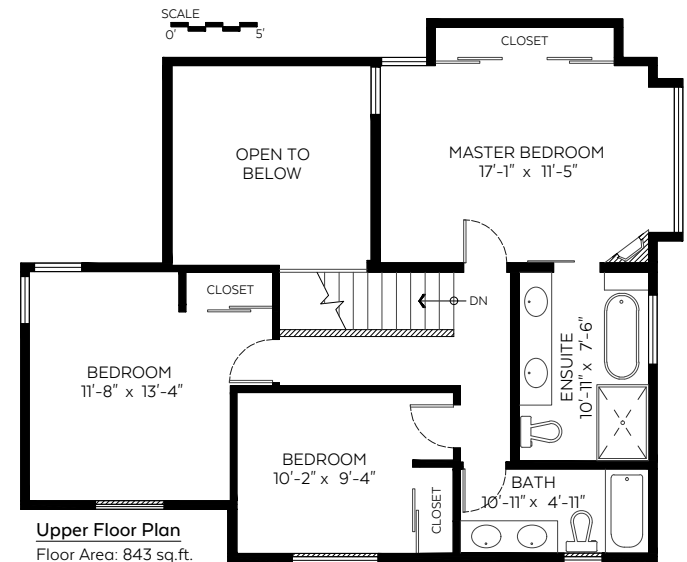
Main Floor:	1,128 sq.ft.
Upper Floor:	843 sq.ft.
Total:	1,971 sq.ft.
Open to Below:	147 sq.ft.

Auxiliary Area

Garage:	446 sq.ft.
Patio:	1,249 sq.ft.
Fitness Room:	157 sq.ft.
Deck:	162 sq.ft.



Main Floor Plan
 Floor Area: 1,128 sq.ft.
 Ceiling Height: 8 ft.



Upper Floor Plan
 Floor Area: 843 sq.ft.
 Ceiling Height: 8 ft.

RE/MAX
 CREST REALTY



Valid Until: December 01, 2022

The floor plan is not suitable for architectural/construction and is covered under E&O. © Excelsior Measuring Inc. 2022. All rights reserved for Excelsior Measuring Inc. Users shall not publish and distribute such material (in whole or in part) and/or incorporate it in other works in any form.

