

# DONOHUE JEFF & JONNY

PERSONAL REAL ESTATE CORPORATION

JEFF@JEFFDONOHUE.COM 604-340-8588  
JONNY@JEFFDONOHUE.COM WWW.JEFFDONOHUE.COM

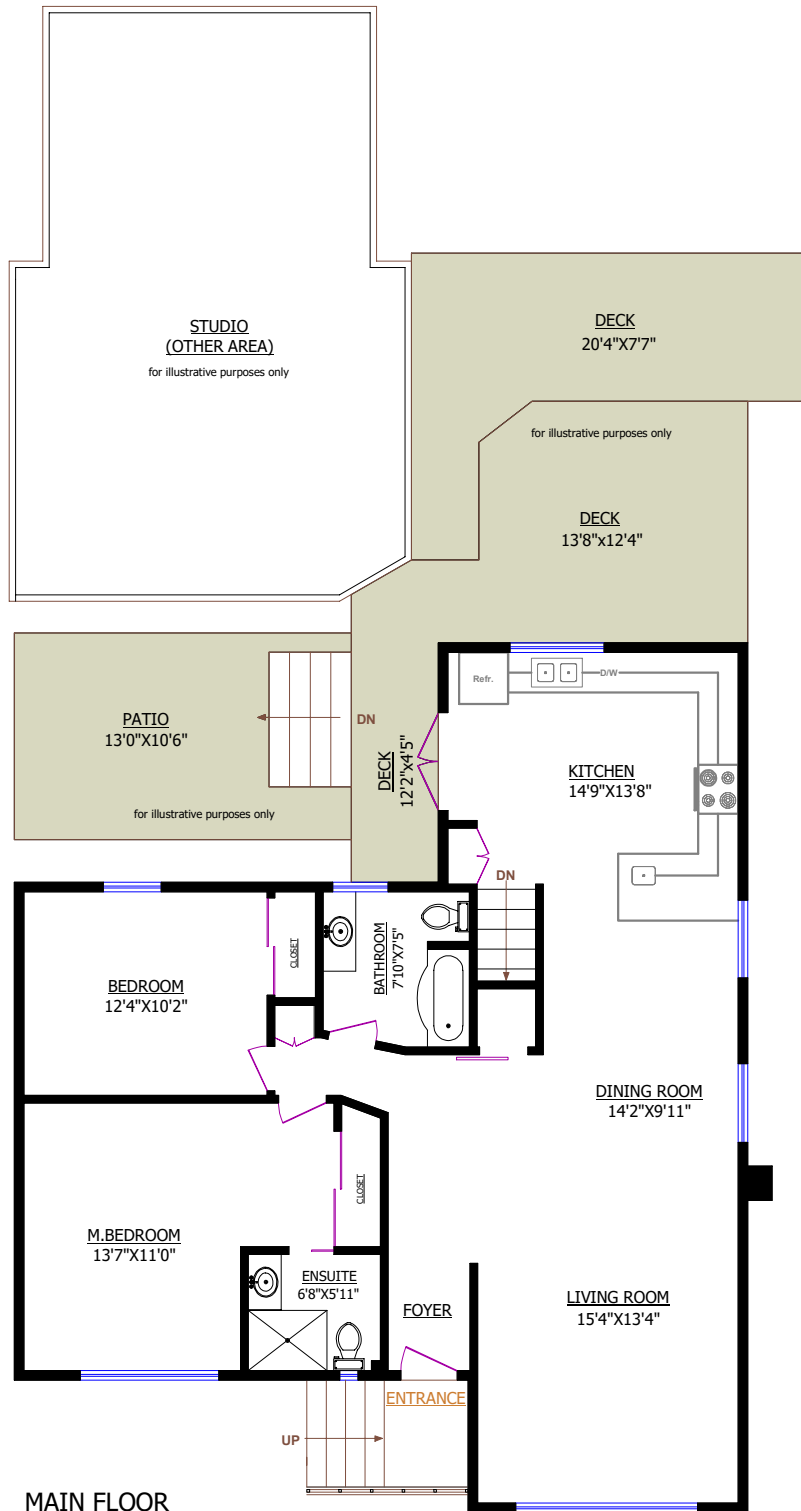
**RE/MAX**  
CREST REALTY

**2778 DOLLARTON HWY  
NORTH VANCOUVER**

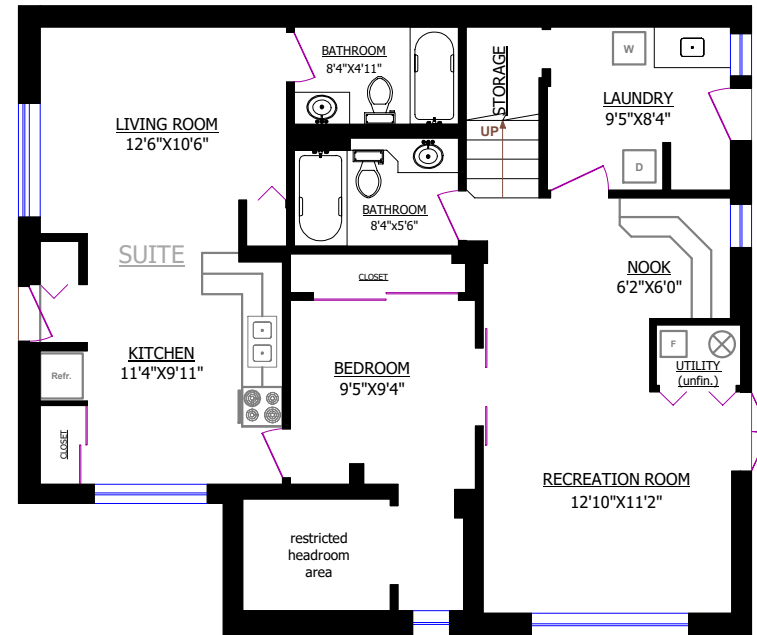
TOTALS*	
Main Floor (finished):	1,234 sq.ft.
Lower Level (finished)*:	1,054 sq.ft.
<b>TOTAL FINISHED*:</b>	<b>2,288 sq.ft.</b>
Lower Level (unfinished):	15 sq.ft.
<b>TOTAL UNFINISHED:</b>	<b>15 sq.ft.</b>
<b>GRAND TOTAL*:</b>	<b>2,303 sq.ft.</b>

OTHER AREAS:	
Studio:	571 sq.ft.

\* Exclude(s) restricted headroom areas

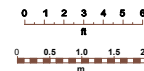


**MAIN FLOOR**



**LOWER LEVEL**

FOR PROMOTIONAL USE ONLY. NOT FOR ARCHITECTURAL, LEGAL OR CONSTRUCTION USE. E&OE



 © Vancouver Realty Support Group Inc.  
www.floorplansvancouver.com  
+1-604-761-7919