

DONOHUE JEFF & JONNY

PERSONAL REAL ESTATE CORPORATION

JEFF@JEFFDONOHUE.COM 604-340-8588 RE/MAX
JONNY@JEFFDONOHUE.COM WWW.JEFFDONOHUE.COM CREST REALTY

139 Osborne Road West,
North Vancouver, B.C.

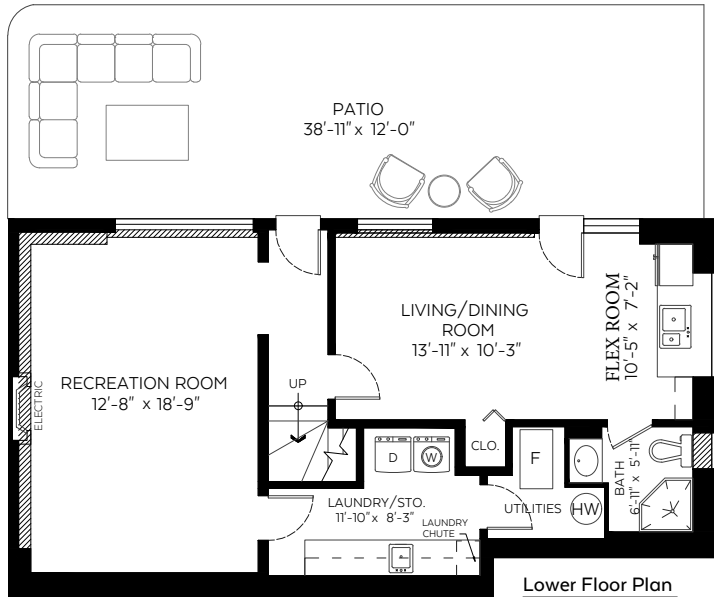
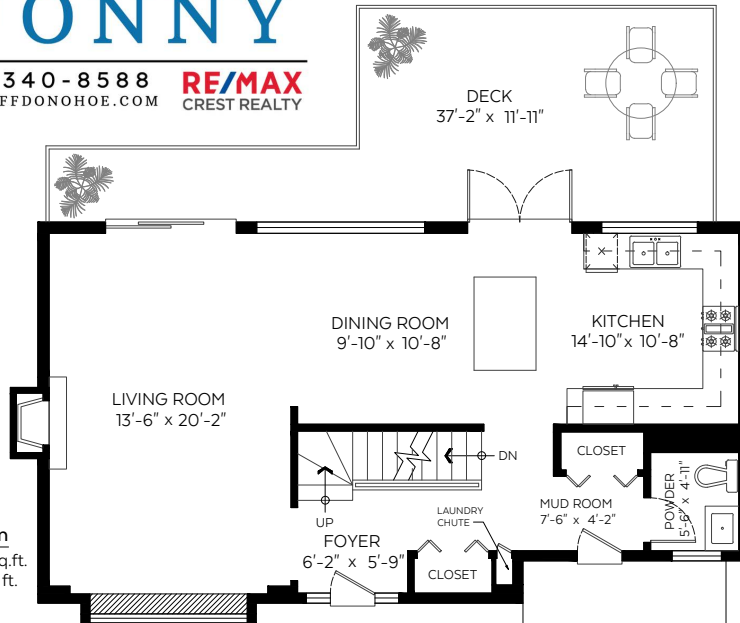
Main Floor:	819 sq.ft.
Upper Floor:	903 sq.ft.
Lower Floor:	819 sq.ft.
Total:	2,541 sq.ft.
Restr. Headroom:	20 sq.ft.

Auxiliary Area

Carport:	239 sq.ft.
Patio:	466 sq.ft.
Deck:	308 sq.ft.

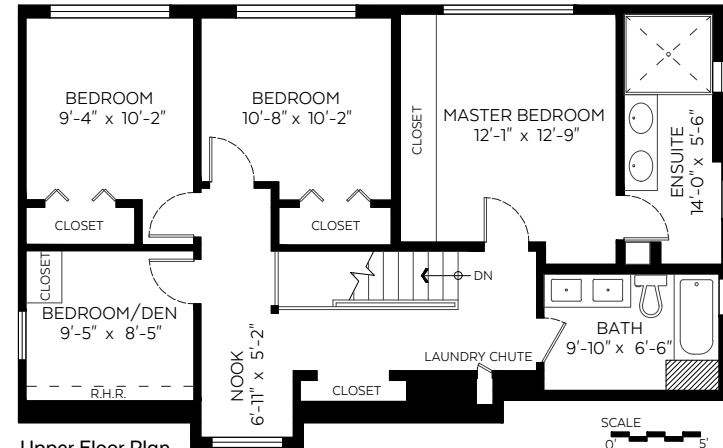
Main Floor Plan

Floor Area: 819 sq.ft.
Ceiling Height: 8 ft.



Lower Floor Plan

Floor Area: 819 sq.ft.
Ceiling Height: 8.25 ft.



Upper Floor Plan

Floor Area: 903 sq.ft.
Ceiling Height: 7.5 ft.

CARPORT
11'-4" x 21'-0"

PATIO
38'-11" x 12'-0"

Valid Until: December 29, 2022

The floor plan is not suitable for architectural/construction and is covered under E&O. © Excelsior Measuring Inc. 2022. All rights reserved for Excelsior Measuring Inc. Users shall not publish and distribute such material (in whole or in part) and/or incorporate it in other works in any form.

RE/MAX
CREST REALTY



NORTH

