

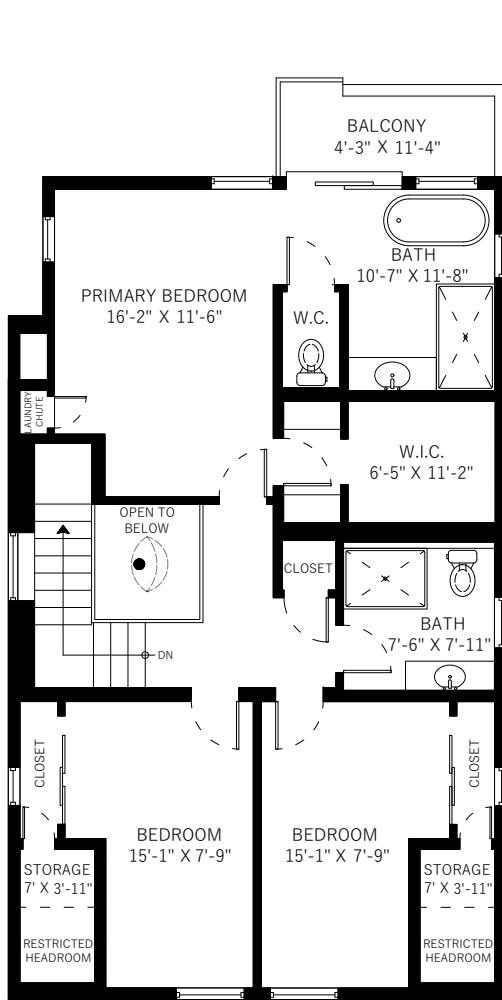
778 E 27th Avenue

Vancouver, BC

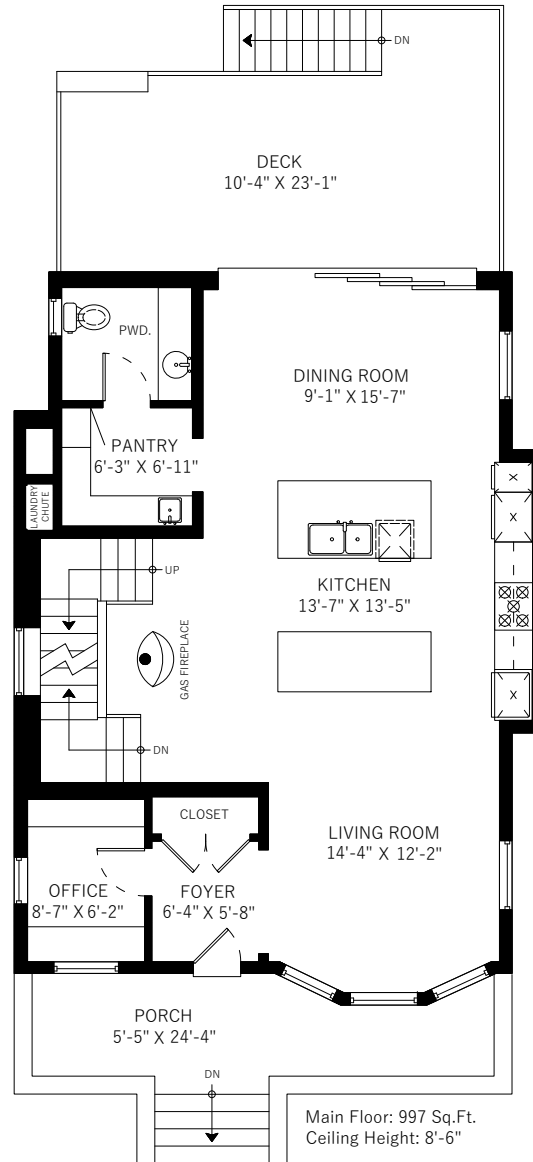
Main Floor	997 SQ.FT.
Upper Floor	1073 SQ.FT.
Lower Floor	571 SQ.FT.
Suite	561 SQ.FT.
Total	3202 SQ.FT.

Patio	109 SQ.FT.
Deck	257 SQ.FT.
Porch	124 SQ.FT.
Balcony	50 SQ.FT.
Garage	237 SQ.FT.
Total Extras	777 SQ.FT.

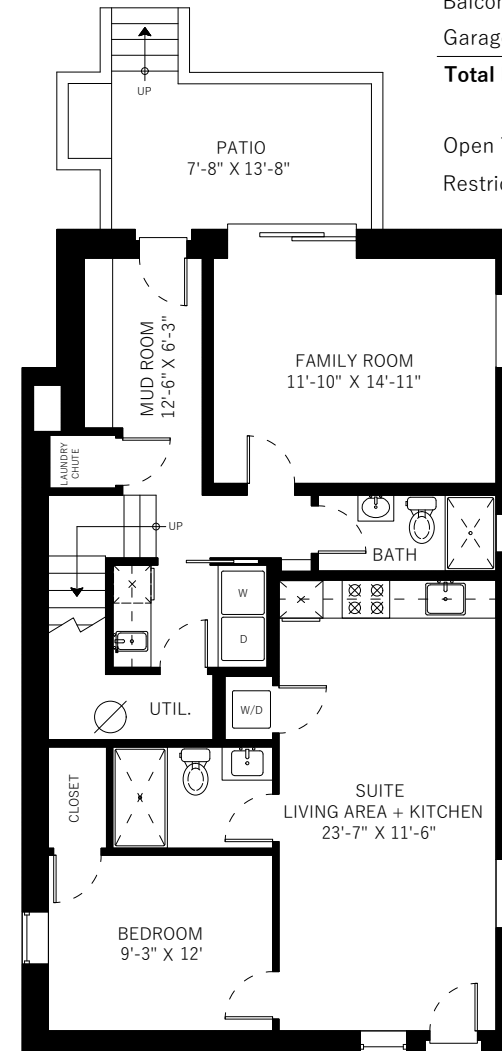
Open To Below	34 SQ.FT.
Restricted Headroom	44 SQ.FT.



Upper Floor: 1073 Sq.Ft.
Ceiling Height Max: 13'



Main Floor: 997 Sq.Ft.
Ceiling Height: 8'-6"



Lower Floor: 571 Sq.Ft.
Lower Suite: 561 Sq.Ft.
Ceiling Height: 8'-7"

