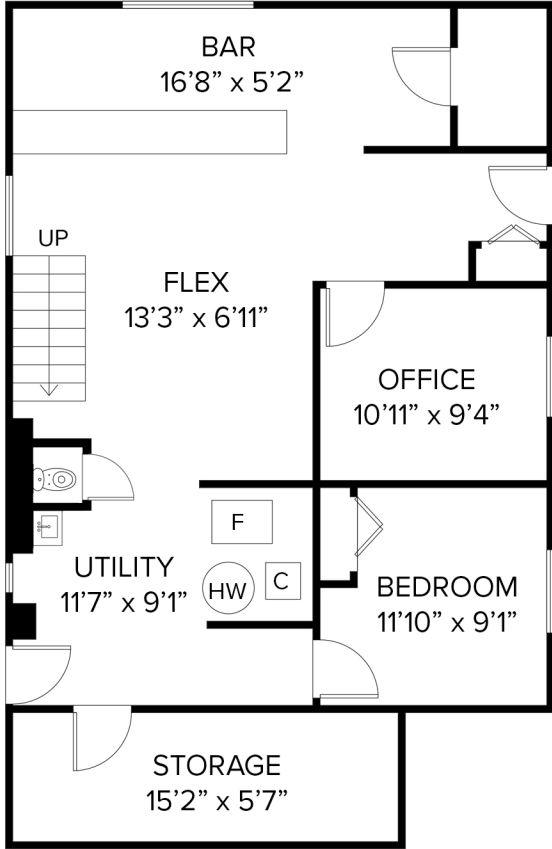


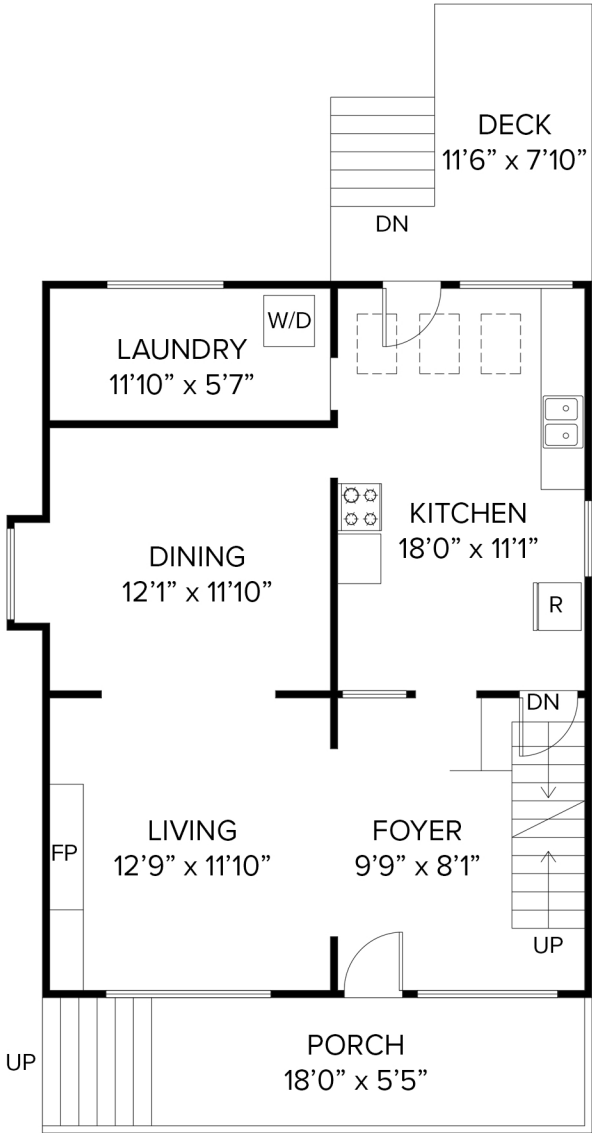
3968 FLEMING STREET



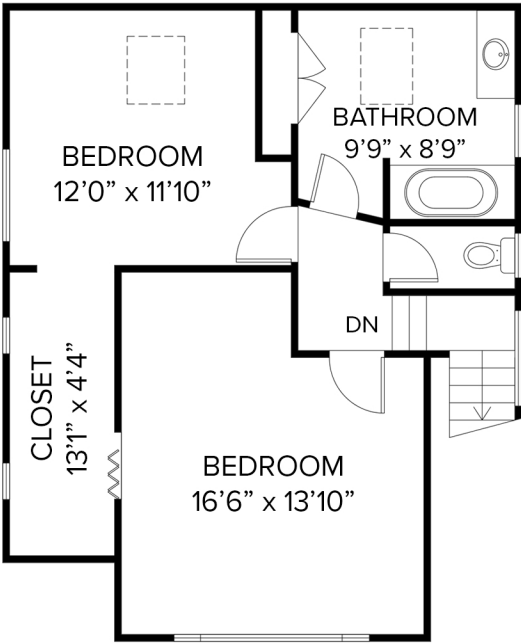
MAIN FLOOR	825 SQFT
TOP FLOOR	665 SQFT
BASEMENT	816 SQFT
TOTAL	2306 SQFT
PORCH/DECK	200 SQFT
STORAGE	96 SQFT



BASEMENT 816 SQFT
CEILING HEIGHT 6'8"



MAIN FLOOR 825 SQFT
CEILING HEIGHT 9'0"



TOP FLOOR 665 SQFT
CEILING HEIGHT 8'3"