

3303-908 Quayside Drive

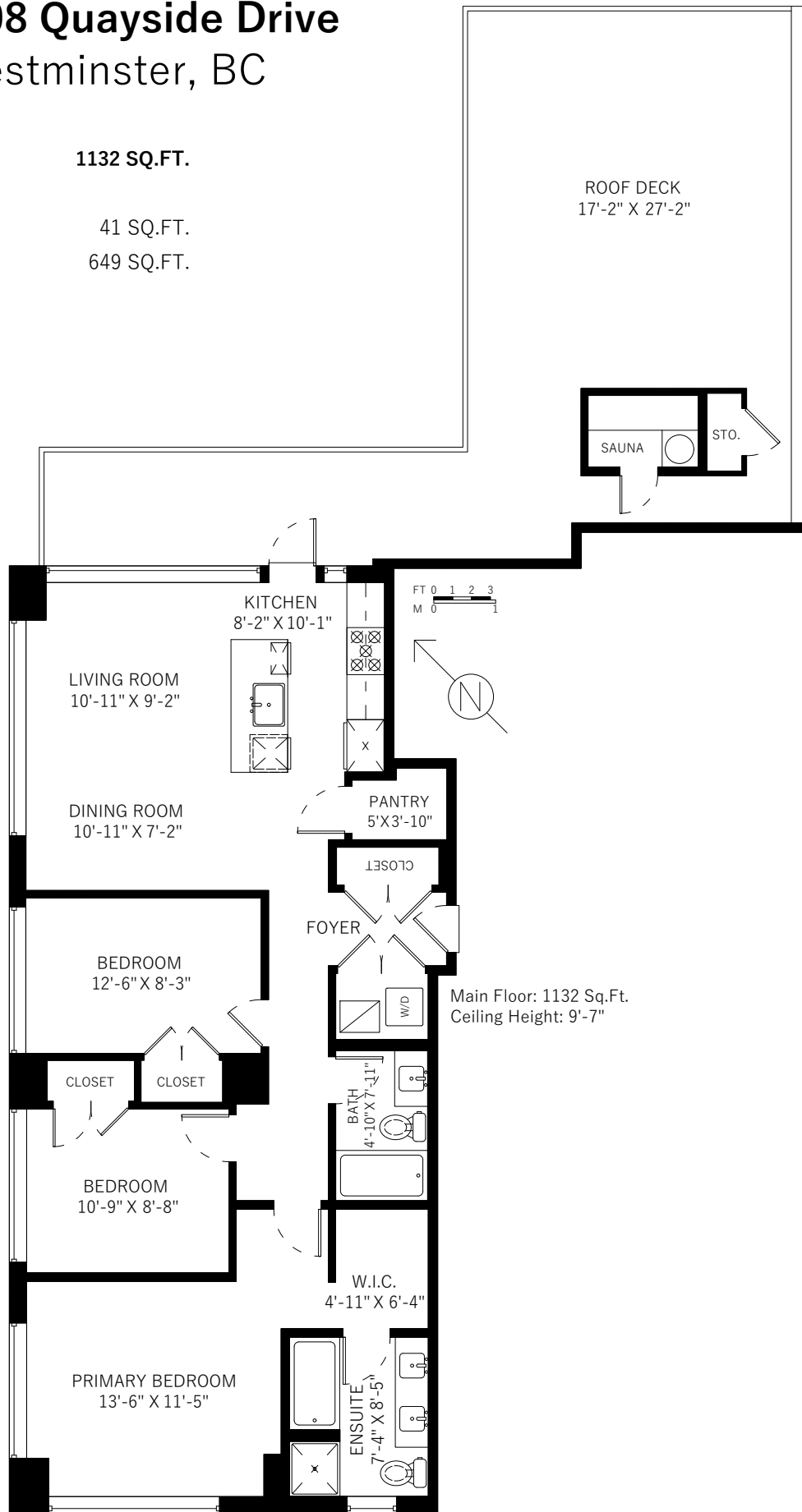
New Westminster, BC

Main Floor 1132 SQ.FT.

Sauna & Storage 41 SQ.FT.

Roof deck 649 SQ.FT.

ROOF DECK
17'-2" X 27'-2"



Main Floor: 1132 Sq.Ft.
Ceiling Height: 9'-7"

Floor plan not suitable for architectural/construction purposes. ANSI Z765 standard used to calculate square footage. E&O Insured.
Measured December 2022 | Measured by Refine Visuals