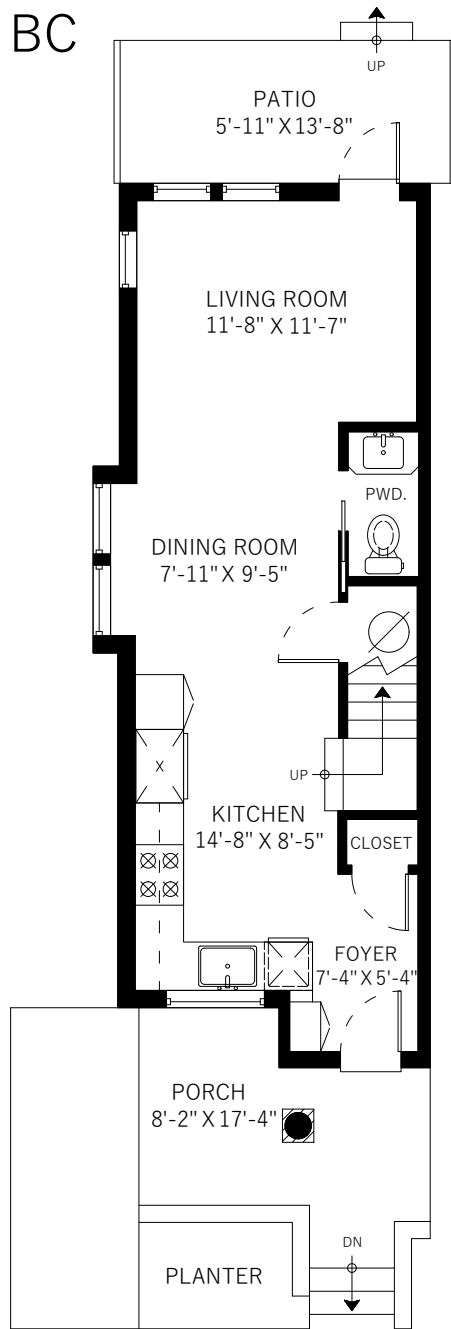
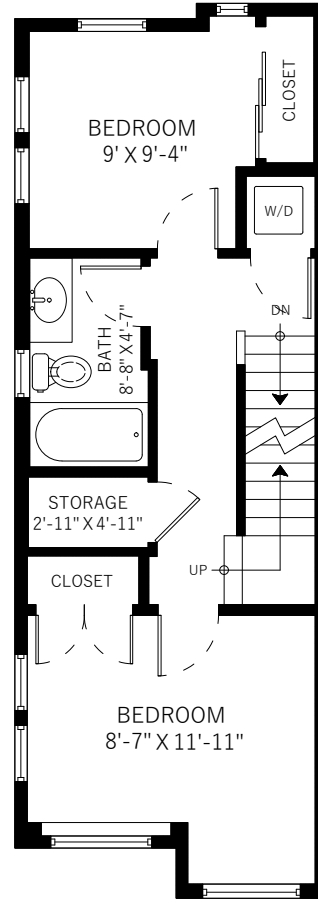


# 1258 Salsbury Drive

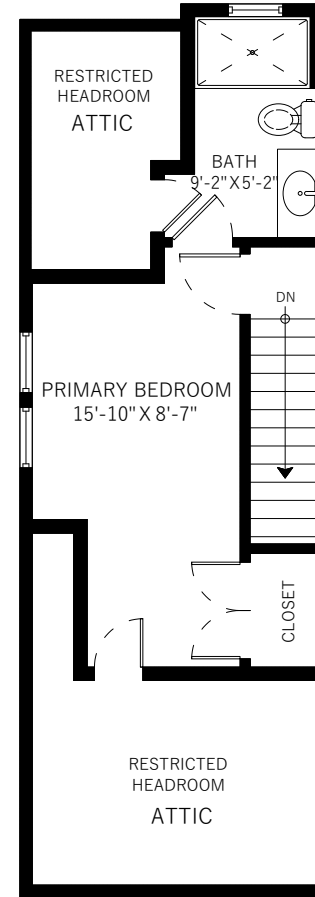
## Vancouver, BC



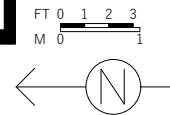
Main Floor: 463 Sq.Ft.  
Ceiling Height: 9'



Upper Floor: 457 Sq.Ft.  
Ceiling Height: 8'



Top Floor: 280 Sq.Ft.  
Ceiling Height: 8'



Main Floor	463 SQ.FT.
Upper Floor	457 SQ.FT.
Top Floor	280 SQ.FT.
<b>Total</b>	<b>1200 SQ.FT.</b>

Patio	81 SQ.FT.
Porch	163 SQ.FT.
<b>Total Extras</b>	<b>244 SQ.FT.</b>

Unfinished Attic 193 SQ.FT.