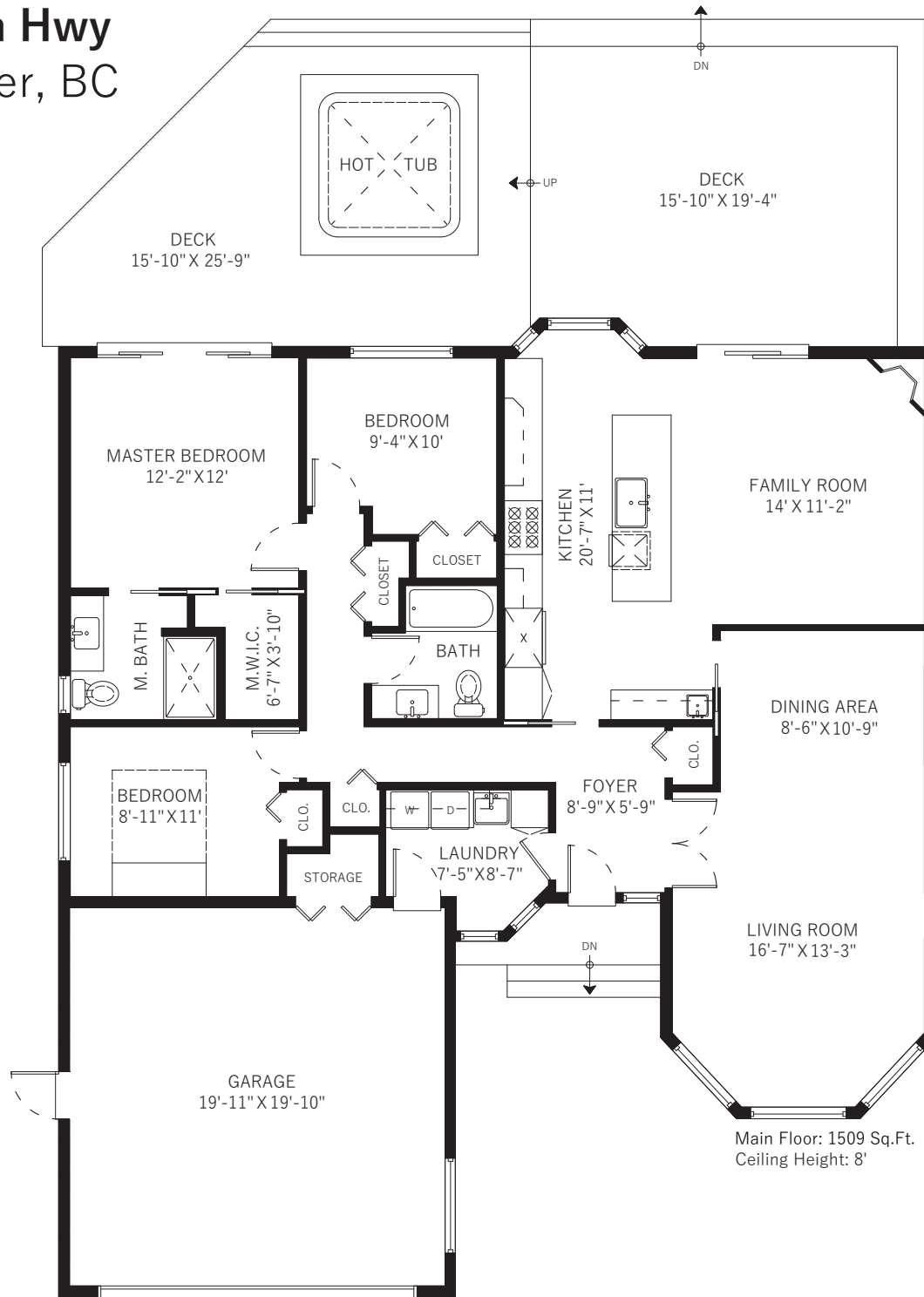


1280 Mountain Hwy North Vancouver, BC



| | |
|---------------------|--------------------|
| Main Floor | 1509 SQ.FT. |
| Decks | 648 SQ.FT. |
| Garage | 445 SQ.FT. |
| Total Extras | 1093 SQ.FT. |



Main Floor: 1509 Sq.Ft.
Ceiling Height: 8'