

# #4 – 935 Ewen Avenue, New Westminster, B.C.

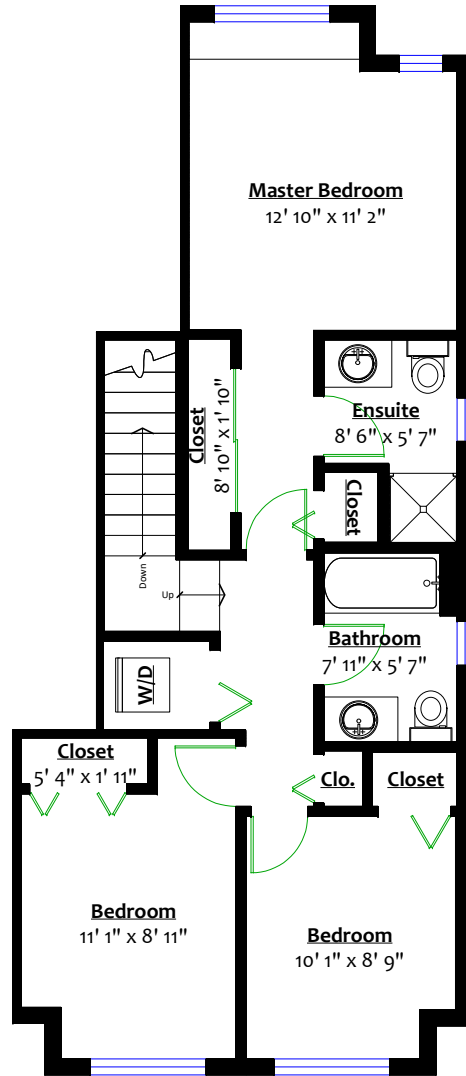
## Totals\*\*

Main Level:	635 sq. ft.	Garage:	287 sq. ft.
Upper Level:	670 sq. ft.	Mechanical:	77 sq. ft.
Lower Level:	247 sq. ft.	Patio:	128 sq. ft.
Total:	1,552 sq. ft.	Deck:	85 sq. ft.
		Total:	577 sq. ft.

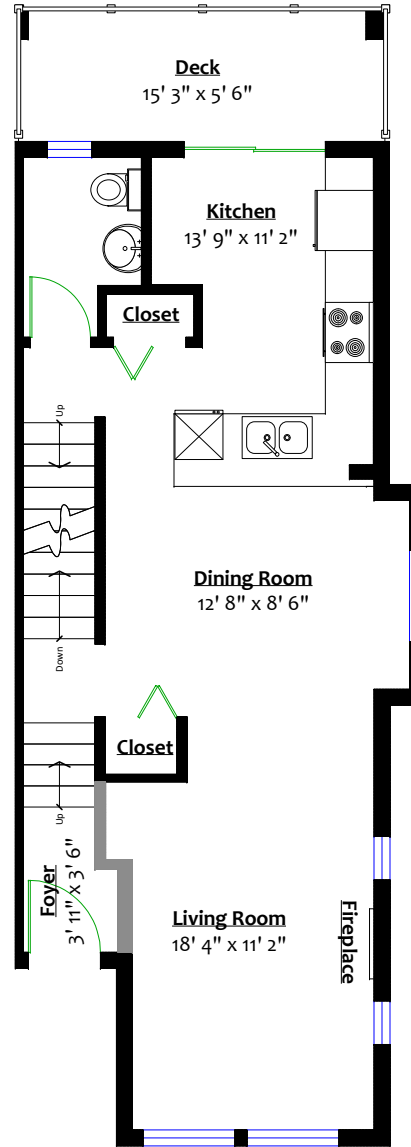


**winniepak**  
a winning experience

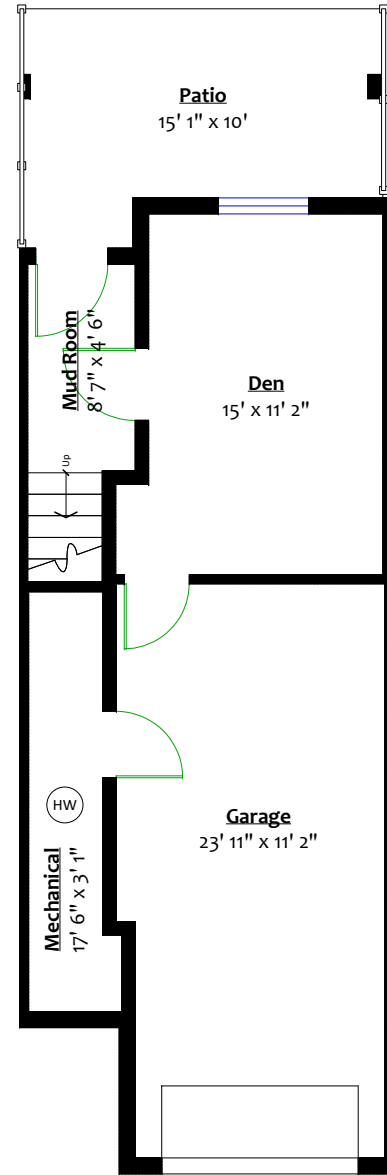
winniepakrealtor@gmail.com 604.813.8000



**UPPER LEVEL**  
Floor Area: 670 Sq. Ft.



**MAIN LEVEL**  
Floor Area: 635 Sq. Ft.



**LOWER LEVEL**  
Floor Area: 247 Sq. Ft.

