

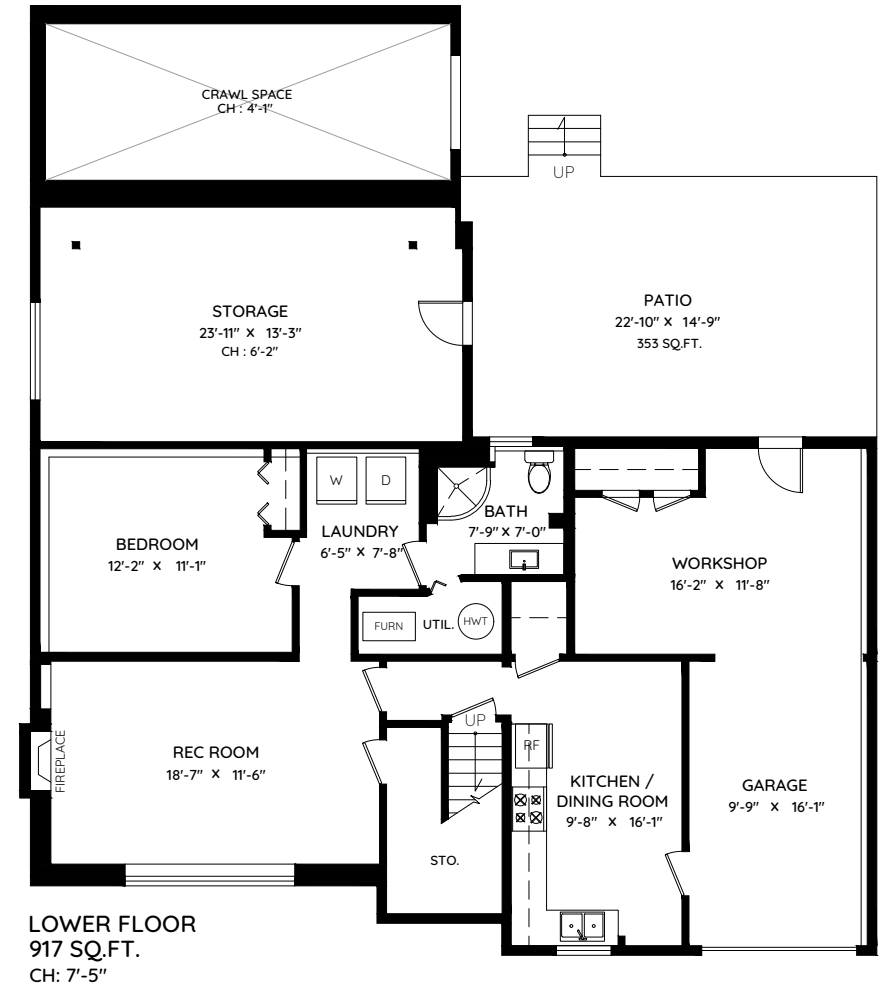
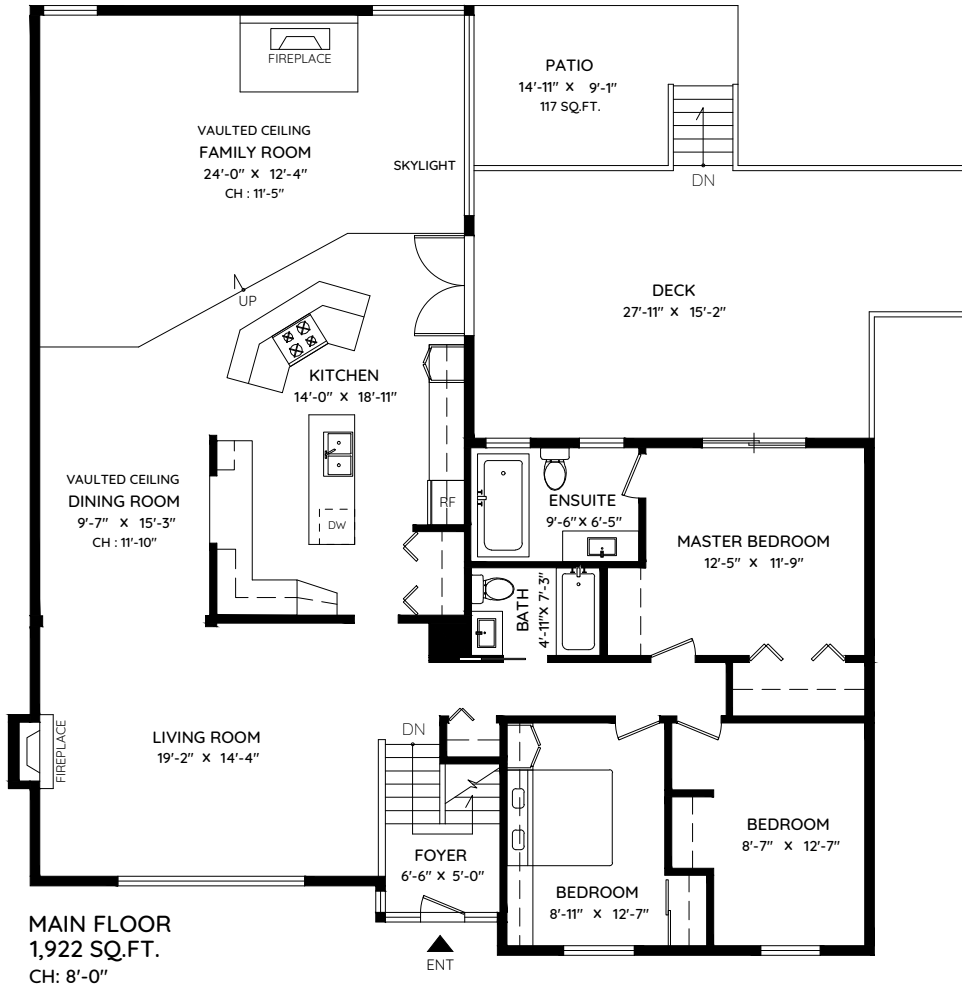
1528 CELESTE CRESCENT

PORT COQUITLAM, BC

MAIN	1,922 SQ.FT.	GARAGE (with WORKSHOP)	391 SQ.FT.
LOWER	917 SQ.FT.	DECK	415 SQ.FT.
TOTAL	2,839 SQ.FT.	PATIO	470 SQ.FT.
		STORAGE	368 SQ.FT.
		TOTAL	1,644 SQ.FT.



604.813.8000
WWW.WINNIEPAK.NET



0 ft 3 ft 5 ft 10 ft

The floor plan and the measurements are approximate within +/- 2% and are to be used for advertising usage only. May include unfinished area. Not suitable for architectural or construction. E&O Insured