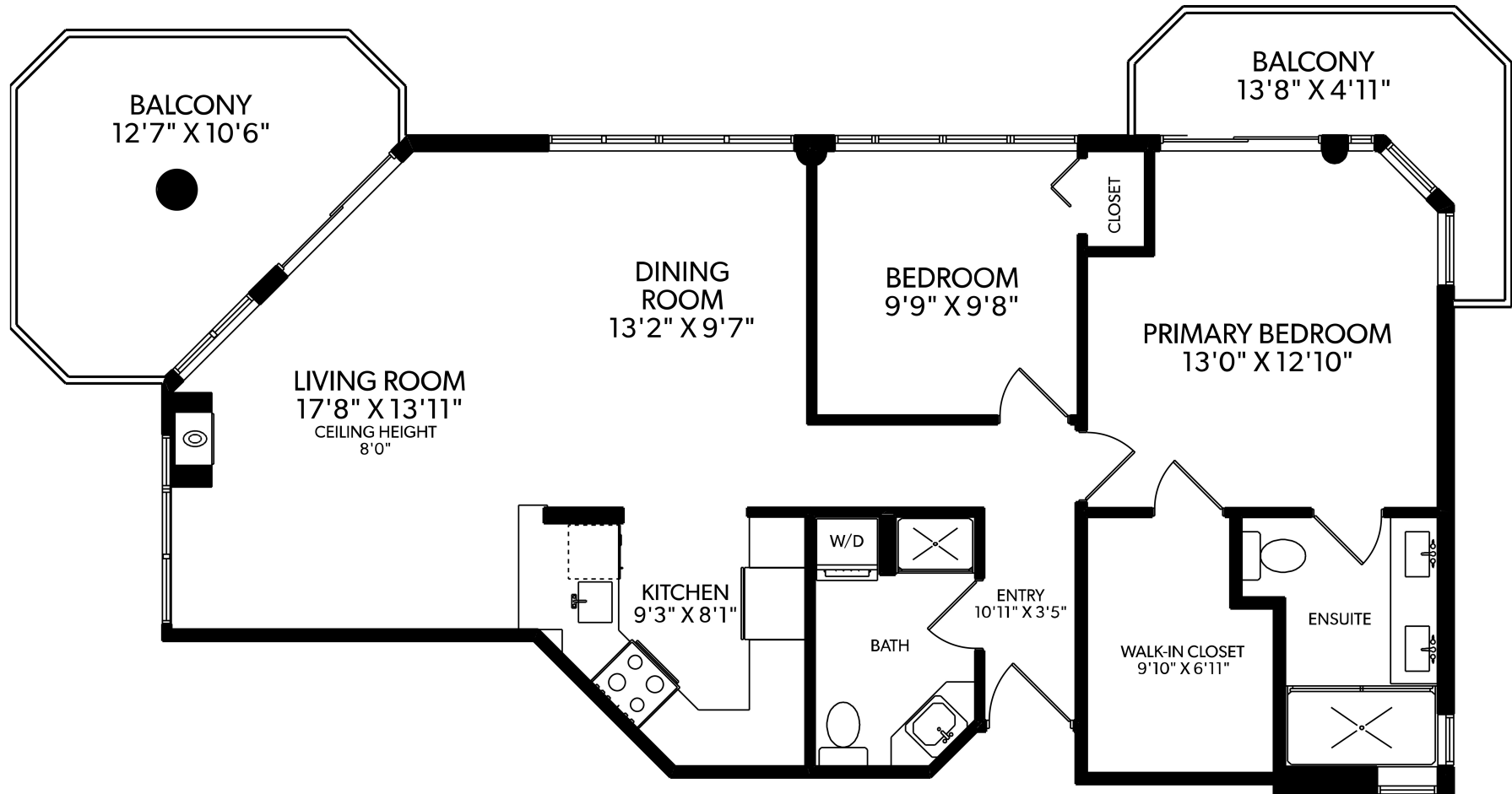


MAIN FLOOR

FLOOR	FINISHED	UNFINISHED	TOTAL	OTHER AREAS
MAIN	1006	0	1006	BALCONIES 224
TOTAL	1006	0	1006	



703-408 LONSDALE AVENUE
GREG PEARSON PERSONAL REAL ESTATE CORPORATION

MEASURED 05/ 02 / 2025

These floor plans are not suitable for construction purposes. Efforts have been made to represent dimensions accurately. Purchaser of the property to verify measurements if important. E&O Insured.

