



Unit 15 Grace Point

111 Fulford-Ganges Road

Total Finished Area - 1,984 Sq. Ft.

Basement - 871 Sq. Ft. (Unfinished)

Ground Floor - 1,059 Sq. Ft.

Upper Floor - 925 Sq. Ft.

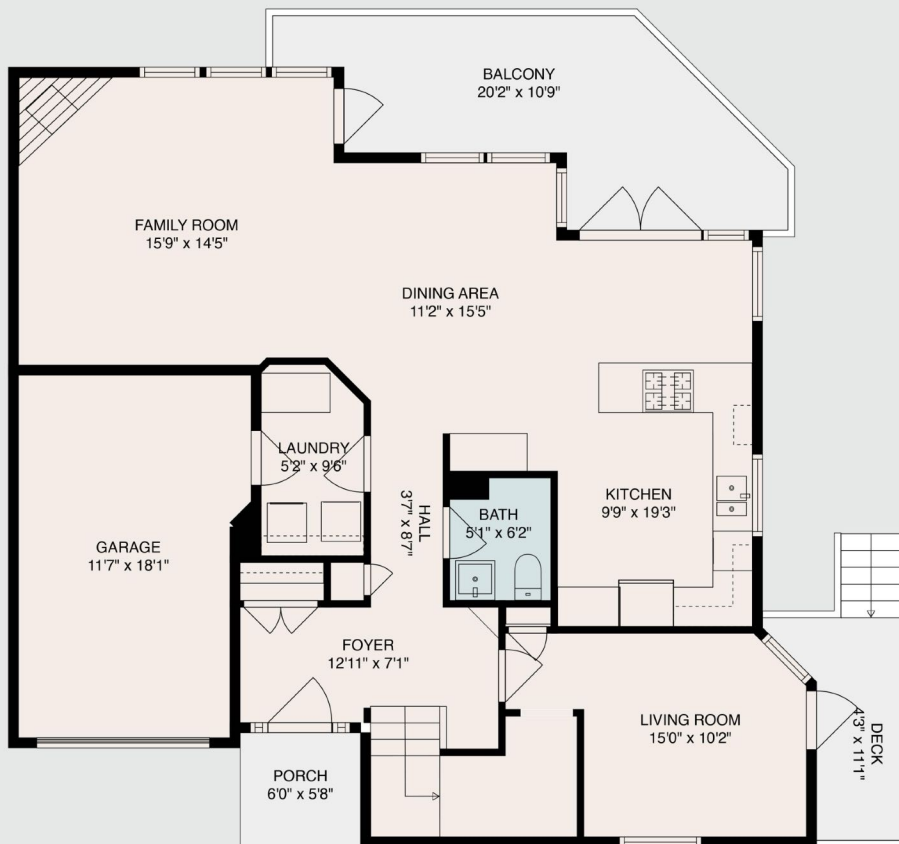
Garage - 213 Sq. Ft.

Balcony - 174 Sq. Ft.

Upper Balcony - 58 Sq. Ft.



JULIAN
BRUCE
REAL ESTATE



Ground Floor - 1059 Sq. Ft.



Unit 15 Grace Point

111 Fulford-Ganges Road

Total Finished Area - 1,984 Sq. Ft.

Basement - 871 Sq. Ft. (Unfinished)

Ground Floor - 1,059 Sq. Ft.

Upper Floor - 925 Sq. Ft.

Garage - 213 Sq. Ft.

Balcony - 174 Sq. Ft.

Upper Balcony - 58 Sq. Ft.



JULIAN
BRUCE
REAL ESTATE



Ground Floor - 1059 Sq. Ft.



Unit 15 Grace Point

111 Fulford-Ganges Road

Total Finished Area - 1,984 Sq. Ft.

Basement - 871 Sq. Ft. (Unfinished)

Ground Floor - 1,059 Sq. Ft.

Upper Floor - 925 Sq. Ft.

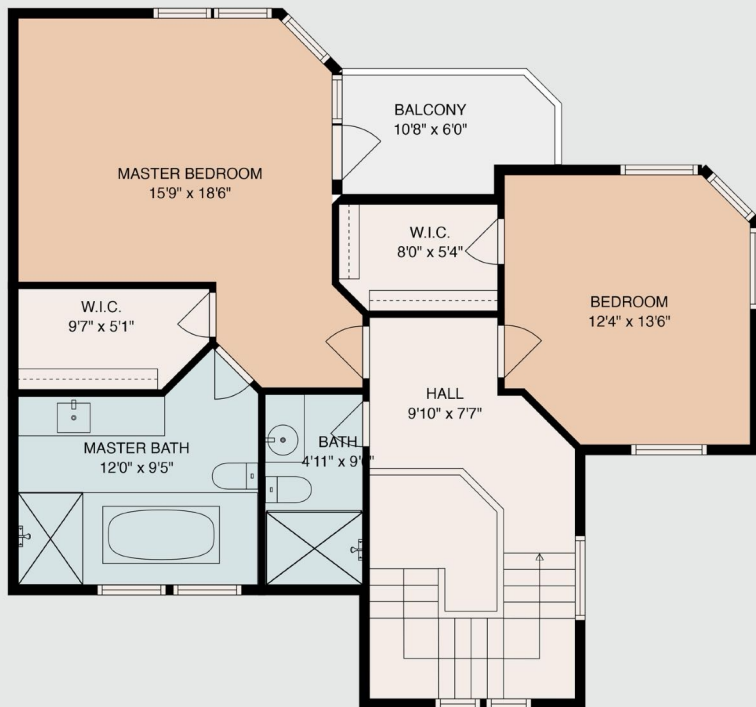
Garage - 213 Sq. Ft.

Balcony - 174 Sq. Ft.

Upper Balcony - 58 Sq. Ft.



**JULIAN
BRUCE**
REAL ESTATE



Upper Floor - 925 Sq. Ft.



Unit 15 Grace Point

111 Fulford-Ganges Road

Total Finished Area - 1,984 Sq. Ft.

Basement - 871 Sq. Ft. (Unfinished)

Ground Floor - 1,059 Sq. Ft.

Upper Floor - 925 Sq. Ft.

Garage - 213 Sq. Ft.

Balcony - 174 Sq. Ft.

Upper Balcony - 58 Sq. Ft.



JULIAN
BRUCE
REAL ESTATE



Upper Floor - 925 Sq. Ft.



Unit 15 Grace Point

111 Fulford-Ganges Road

Total Finished Area - 1,984 Sq. Ft.

Basement - 871 Sq. Ft. (Unfinished)

Ground Floor - 1,059 Sq. Ft.

Upper Floor - 925 Sq. Ft.

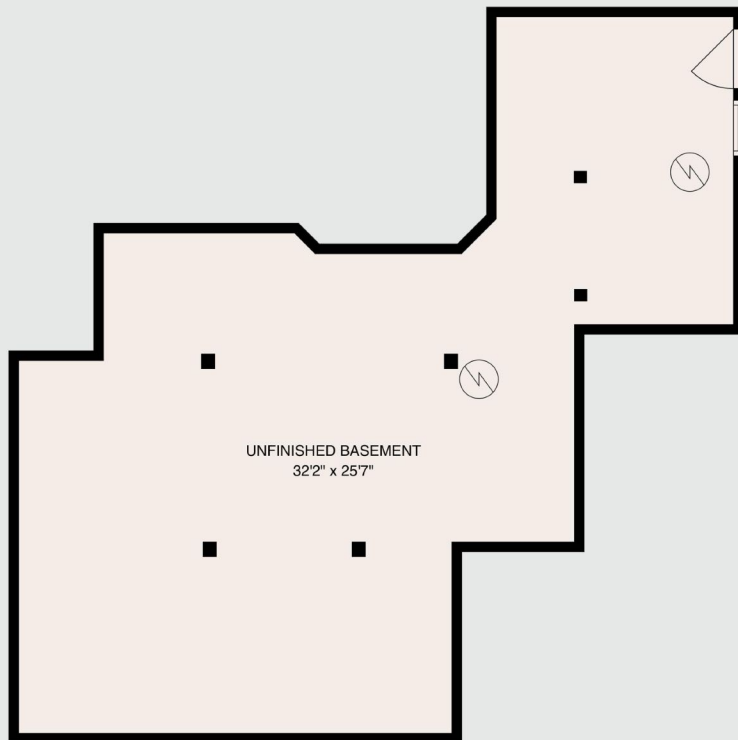
Garage - 213 Sq. Ft.

Balcony - 174 Sq. Ft.

Upper Balcony - 58 Sq. Ft.



JULIAN
BRUCE
REAL ESTATE



Basement (unfinished) - 871 Sq. Ft.



Unit 15 Grace Point

111 Fulford-Ganges Road

Total Finished Area - 1,984 Sq. Ft.

Basement - 871 Sq. Ft. (Unfinished)

Ground Floor - 1,059 Sq. Ft.

Upper Floor - 925 Sq. Ft.

Garage - 213 Sq. Ft.

Balcony - 174 Sq. Ft.

Upper Balcony - 58 Sq. Ft.



JULIAN
BRUCE
REAL ESTATE



Basement (unfinished) - 871 Sq. Ft.